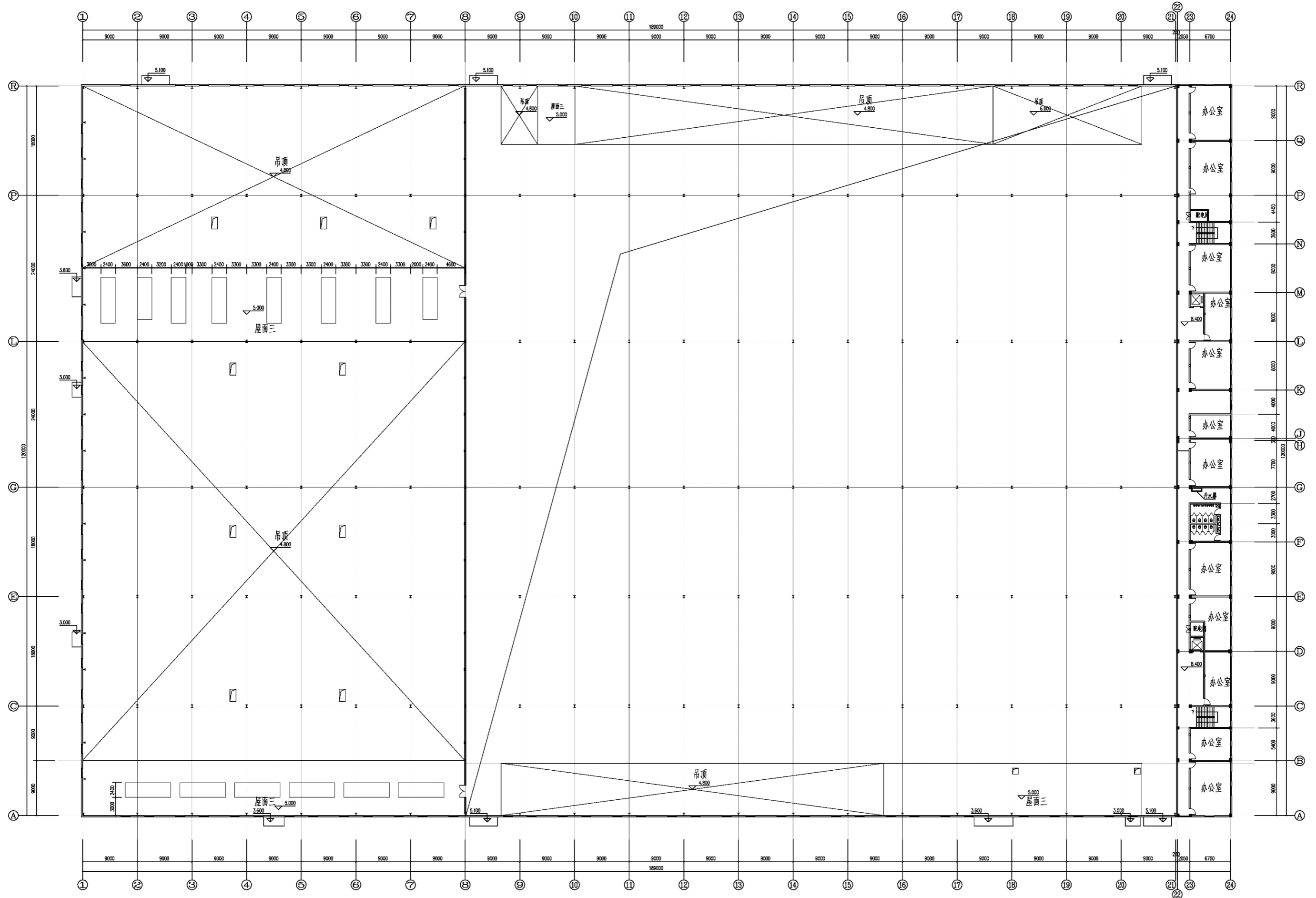


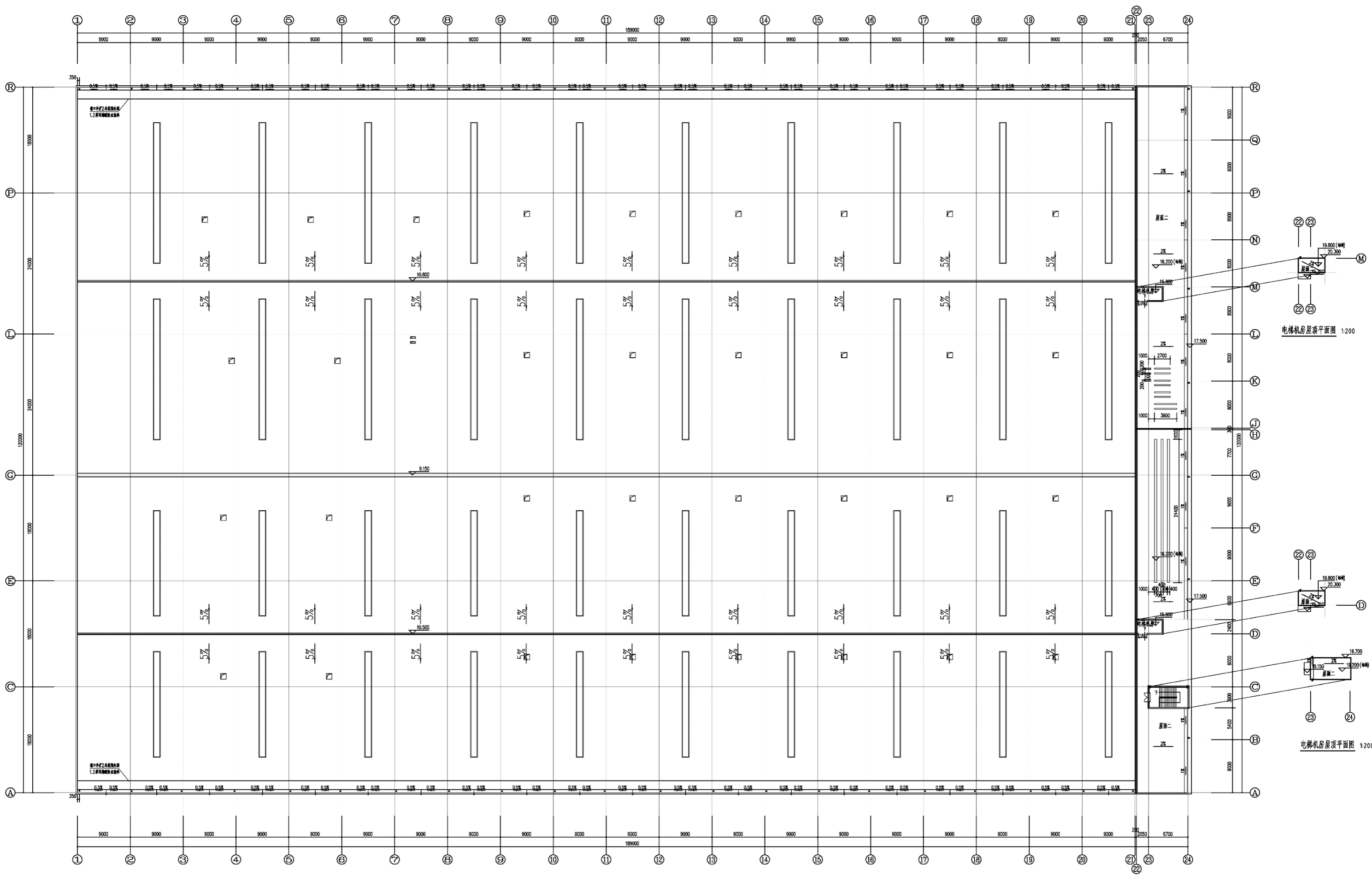
调整内容：车间部分屋脊由单屋脊调整为双屋脊。屋脊高度由13.7m调整为10.8m，檐口高度由10.7m调整为9.15m。辅房一层层高由3.9m调整为4.5m。

2#厂房平面图



8.400标高平面图 1:200

2#厂房平面图

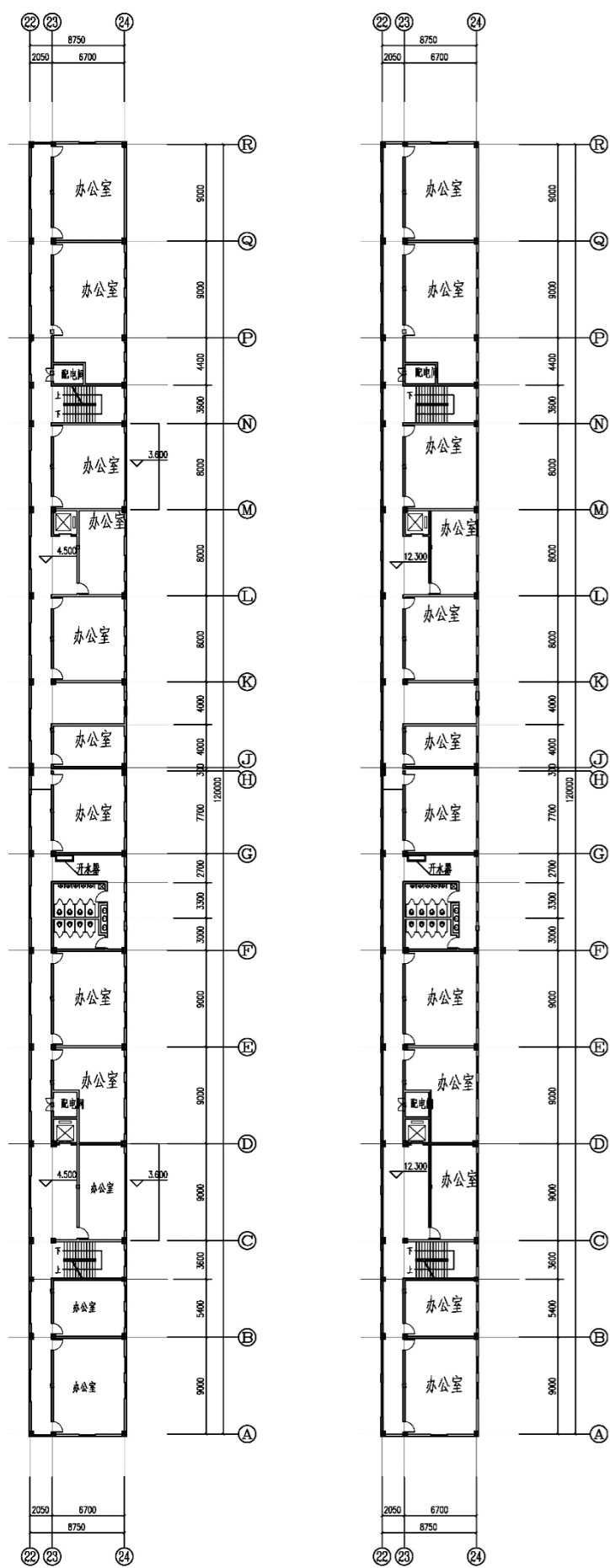


屋顶平面图 1:200

电梯机房屋顶平面图 1:200

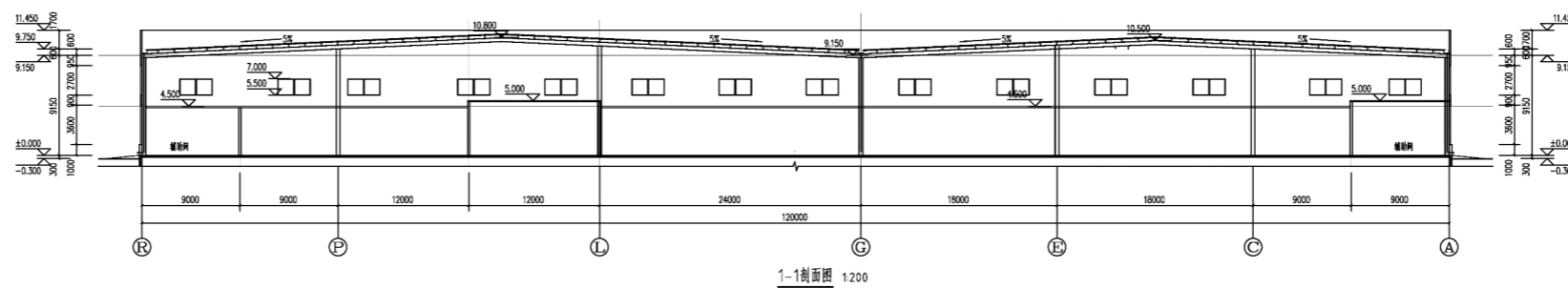
电梯机房屋顶平面图 1:200

2#厂房剖面图

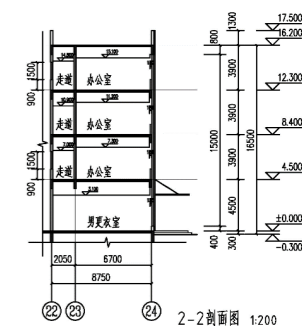


4.500标高平面图 1:200

12.300标高平面图 1:200



1-1剖面图 1:200



2-2剖面图 1:200