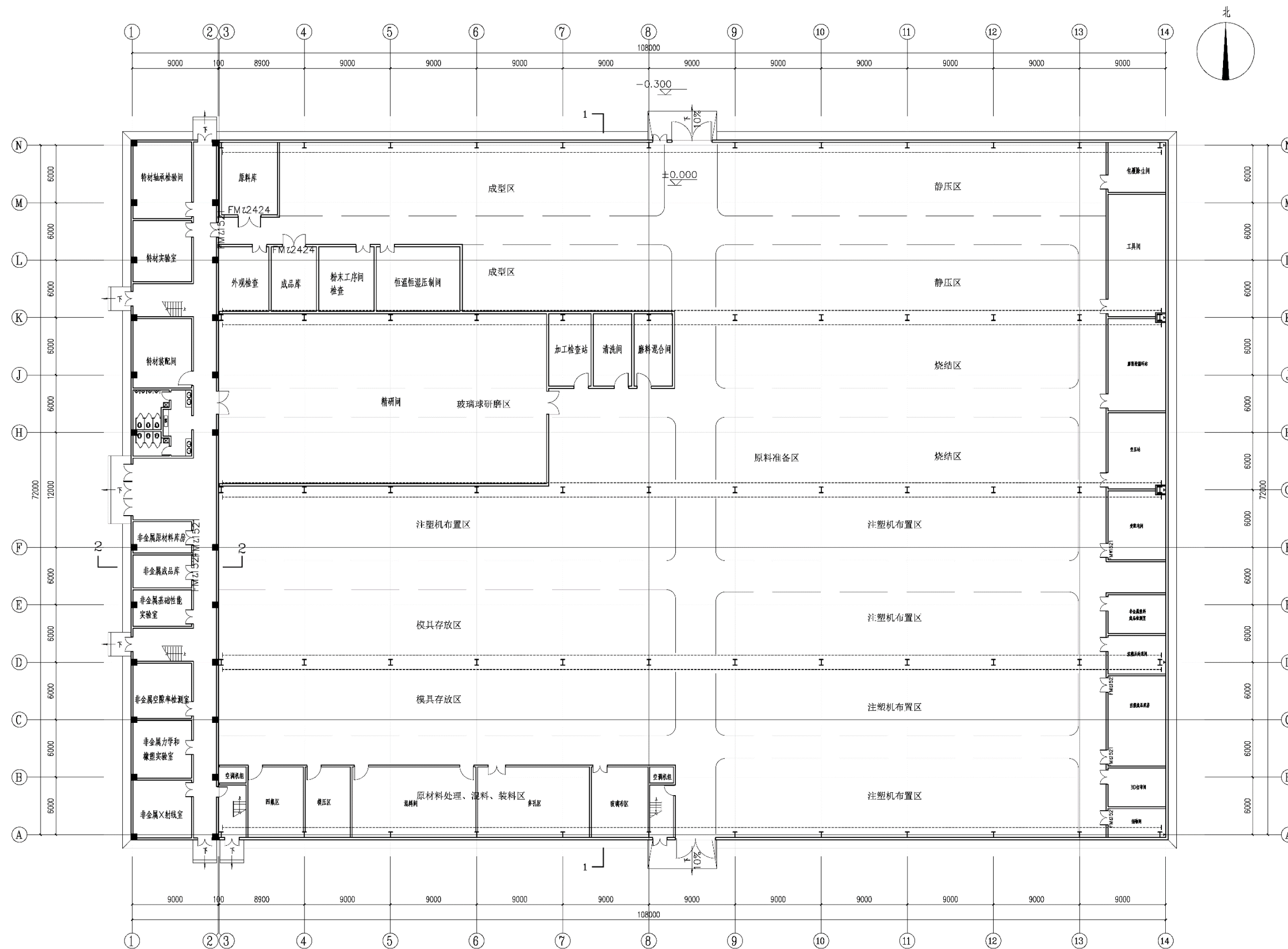


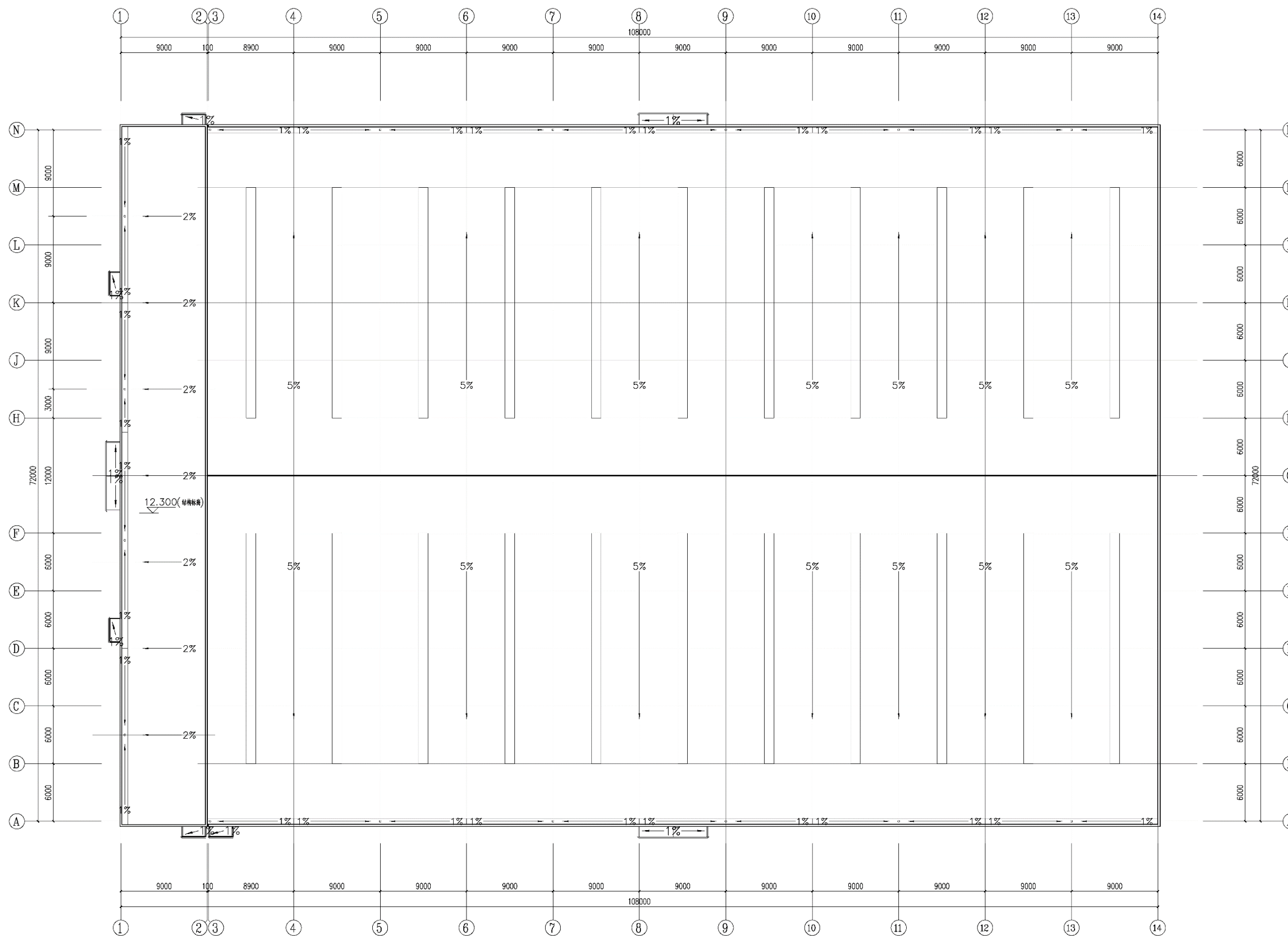
4#厂房平面图



4#厂房一层平面图 1:200

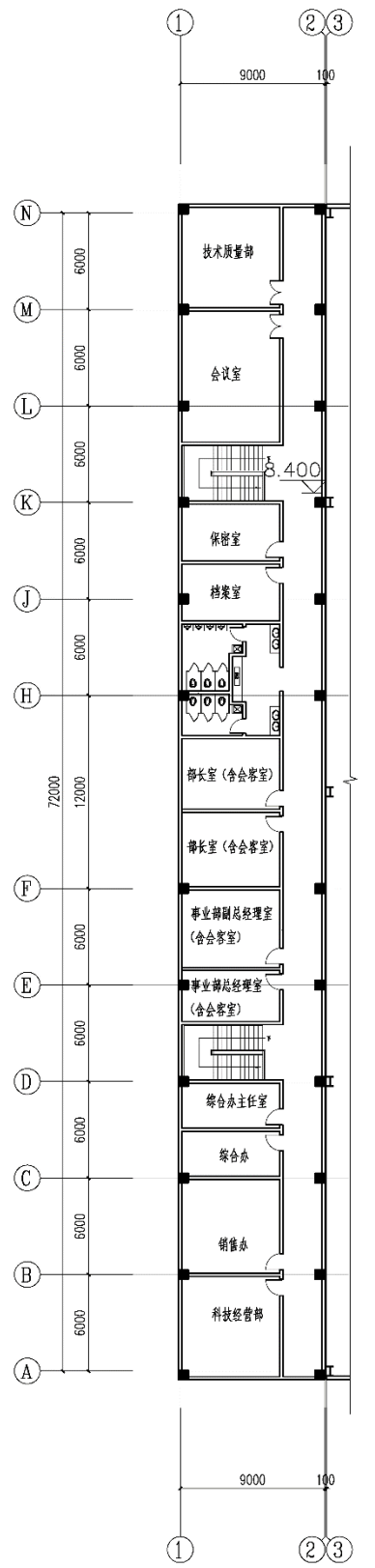
调整内容：辅房首层层高由3900mm调整为4500mm。

4#厂房平面图

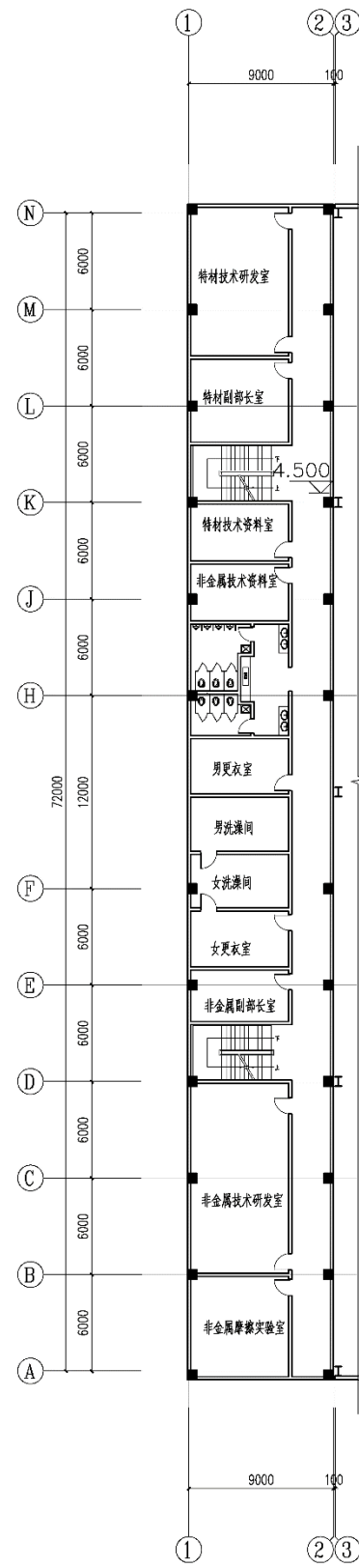


4#厂房屋顶平面图 1:200

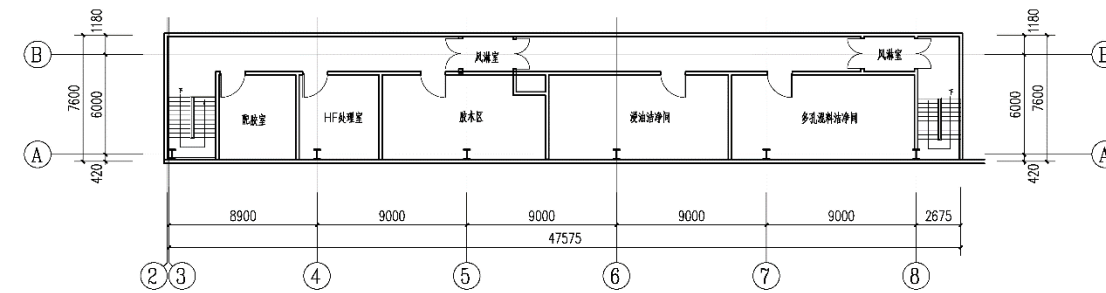
4#厂房平面、剖面图



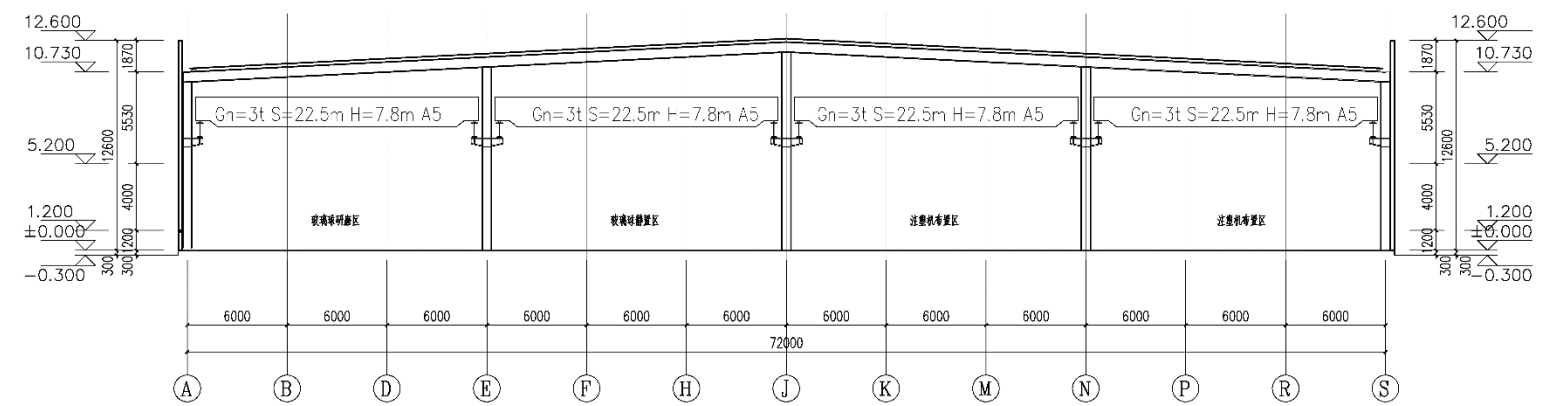
4#厂房辅房三层平面图 1:200



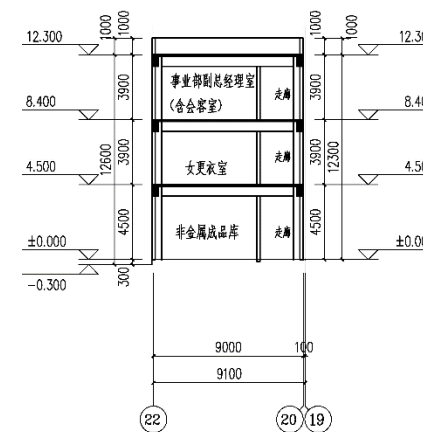
4#厂房辅房二层平面图 1:200



4#厂房辅房二层平面图 1:200



4#厂房1-1剖面图 1:200



物流中心2-2剖面图 1:200