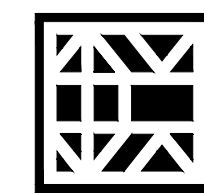
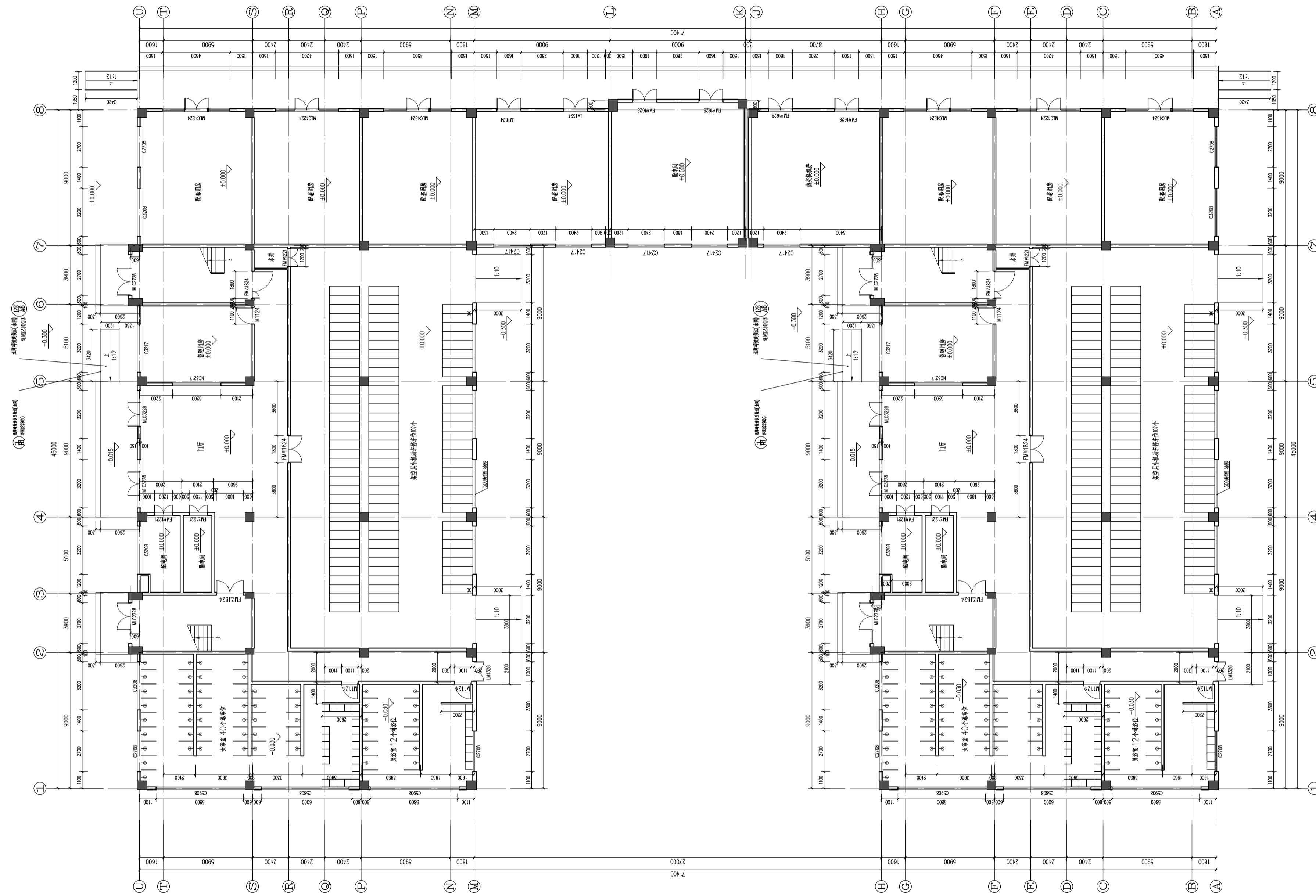


子项名称	2#、3#宿舍
方案编号	F2022006
日期	2022. 08

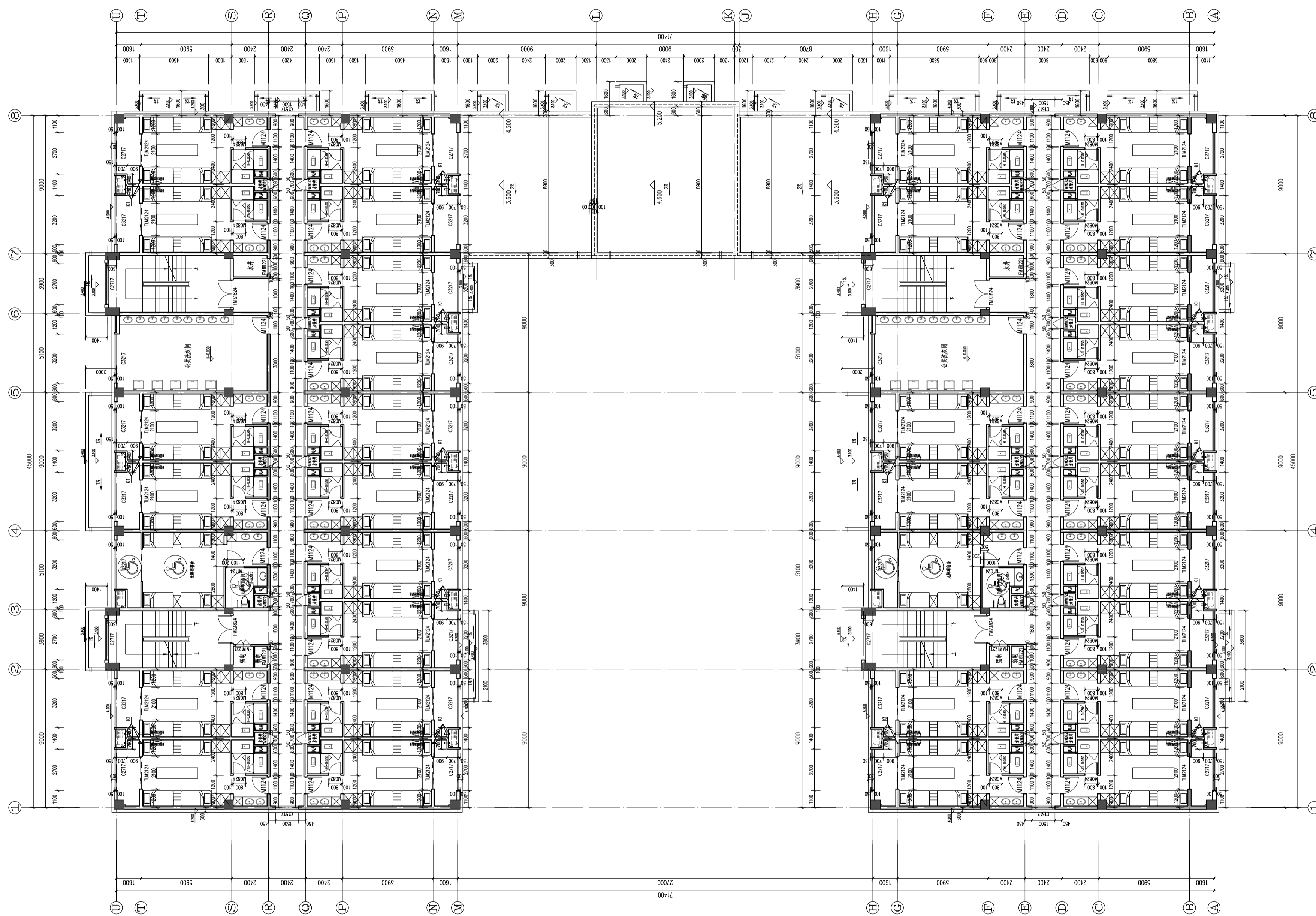


建筑方案效果	
建筑方案说明	
建筑方案文件	

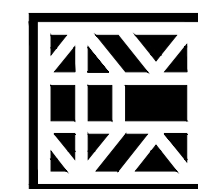


一层平面图 1:300

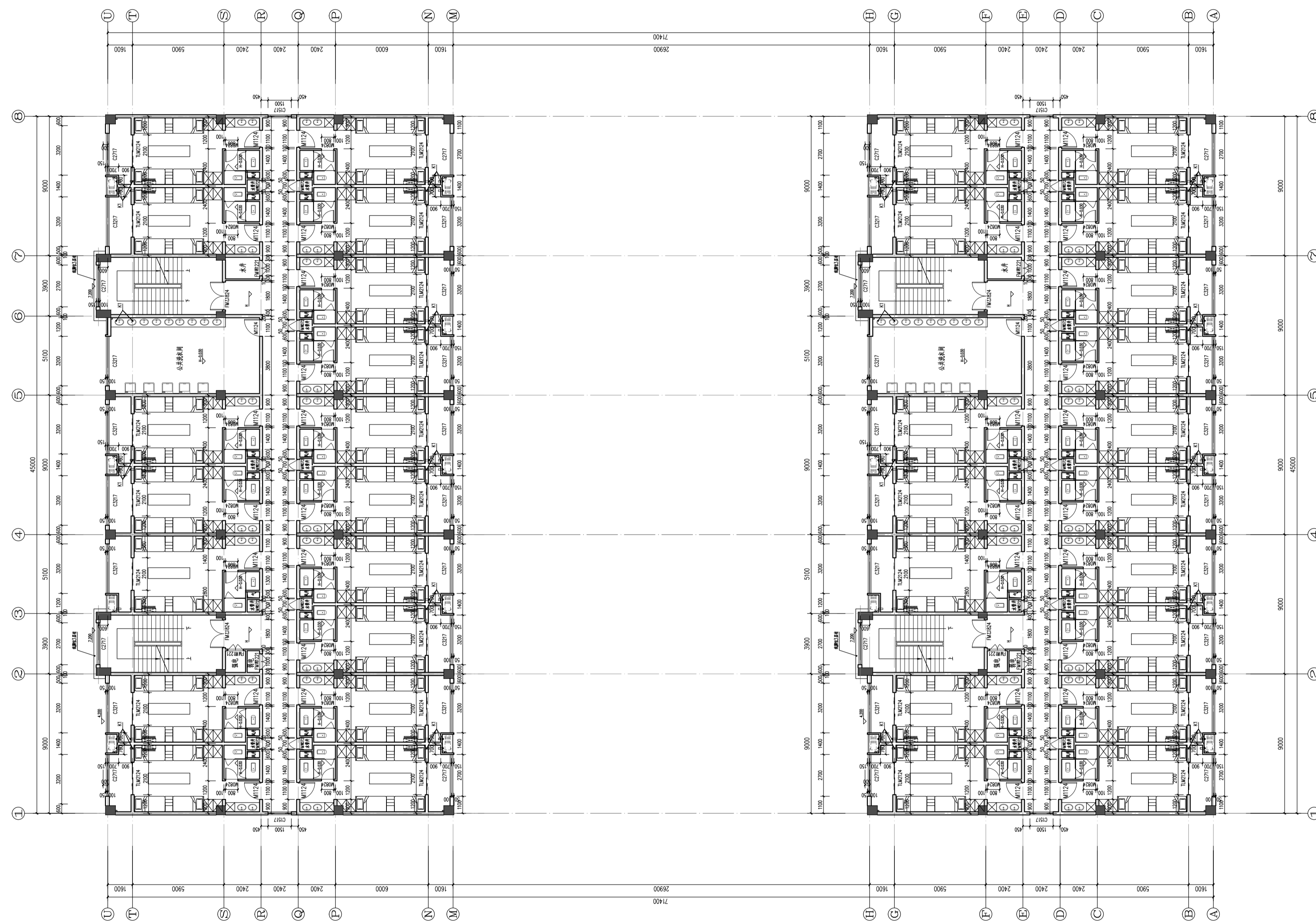
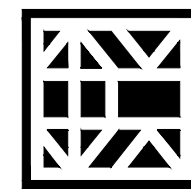
一栋宿舍住408人(按6人间算), 三栋宿舍共住1224人



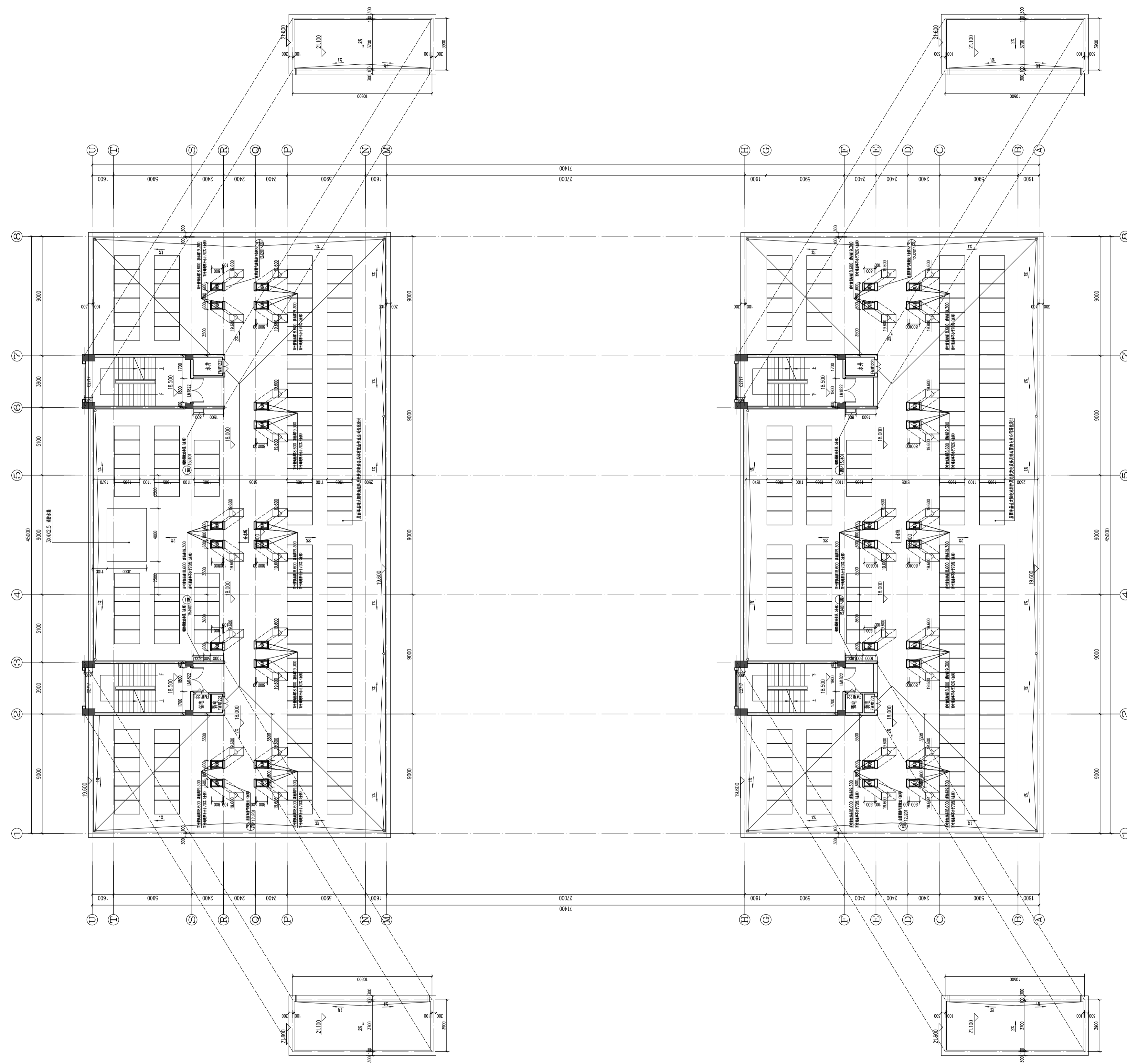
二层平面图 1:300



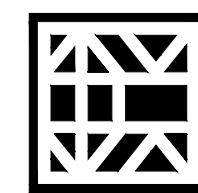
子项名称	2#、3#宿舍
方案编号	F2022006
日期	2022. 08

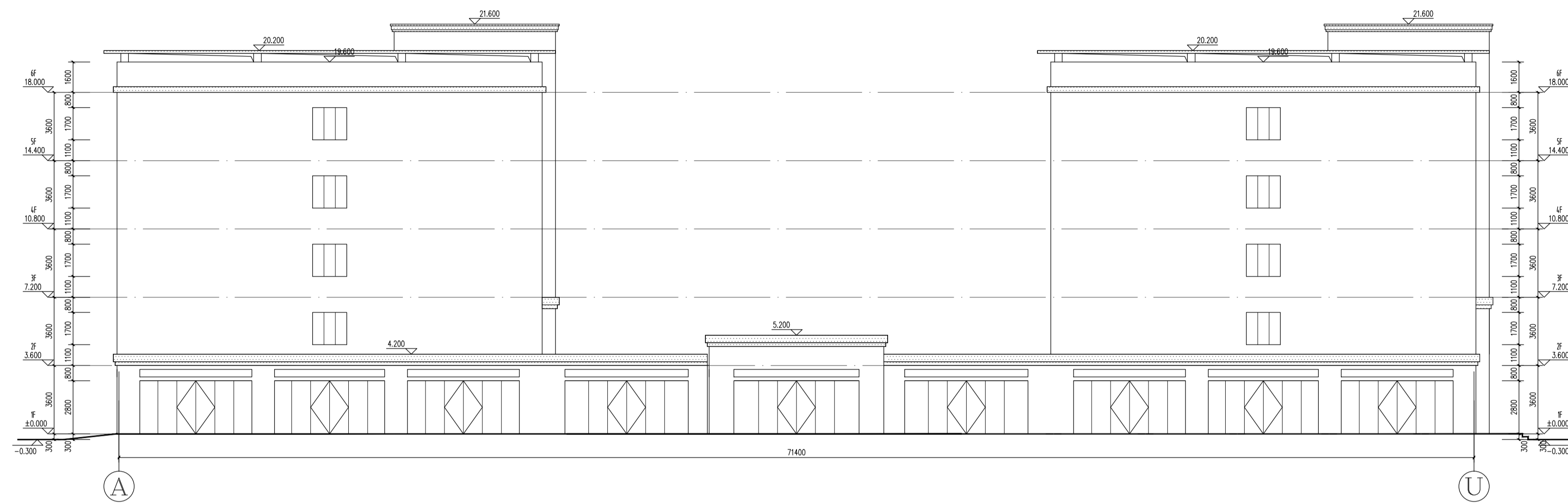


三-五层平面图 1:300

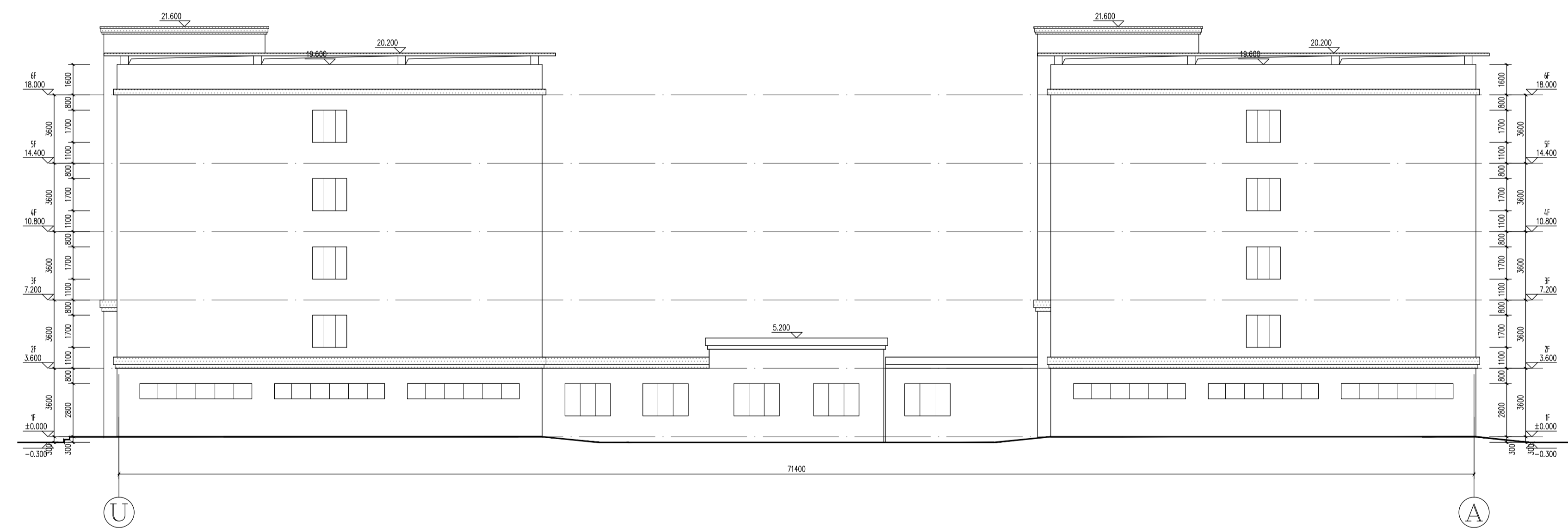


屋顶平面图 1:300

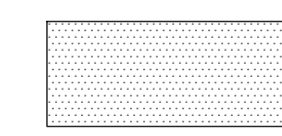
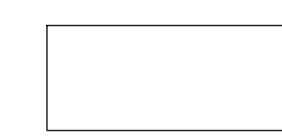



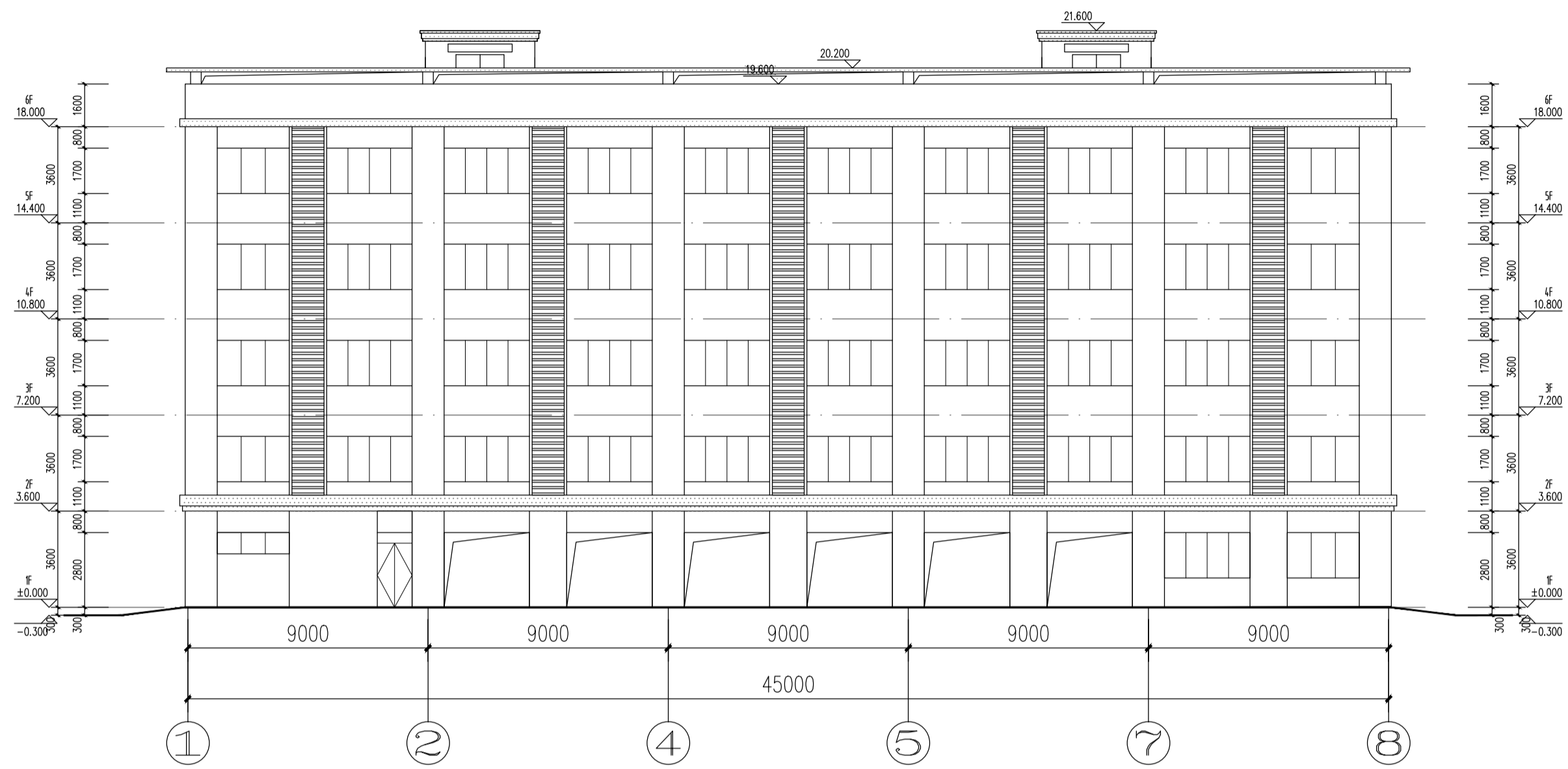


东立面 1:300

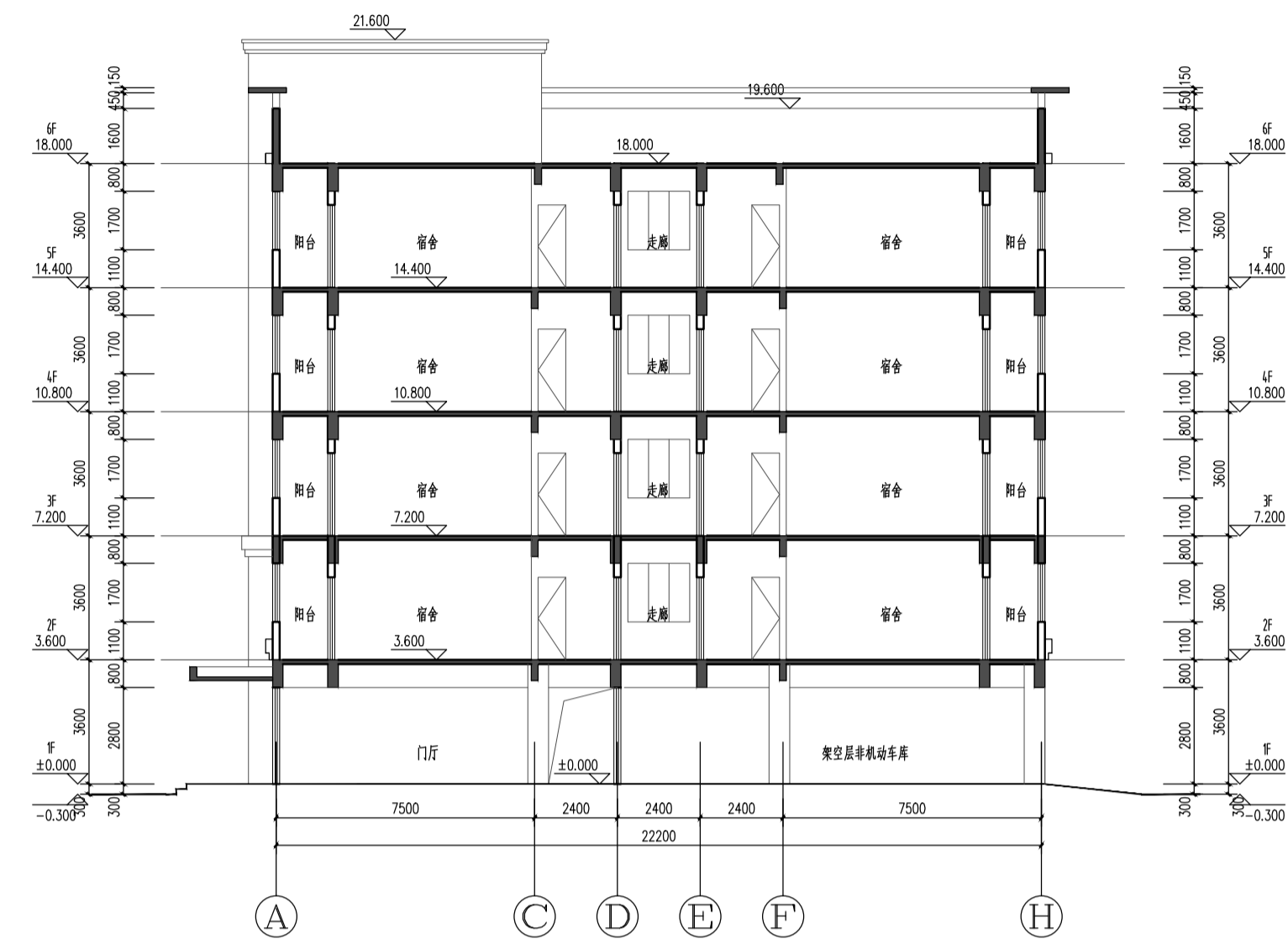


西立面 1:300

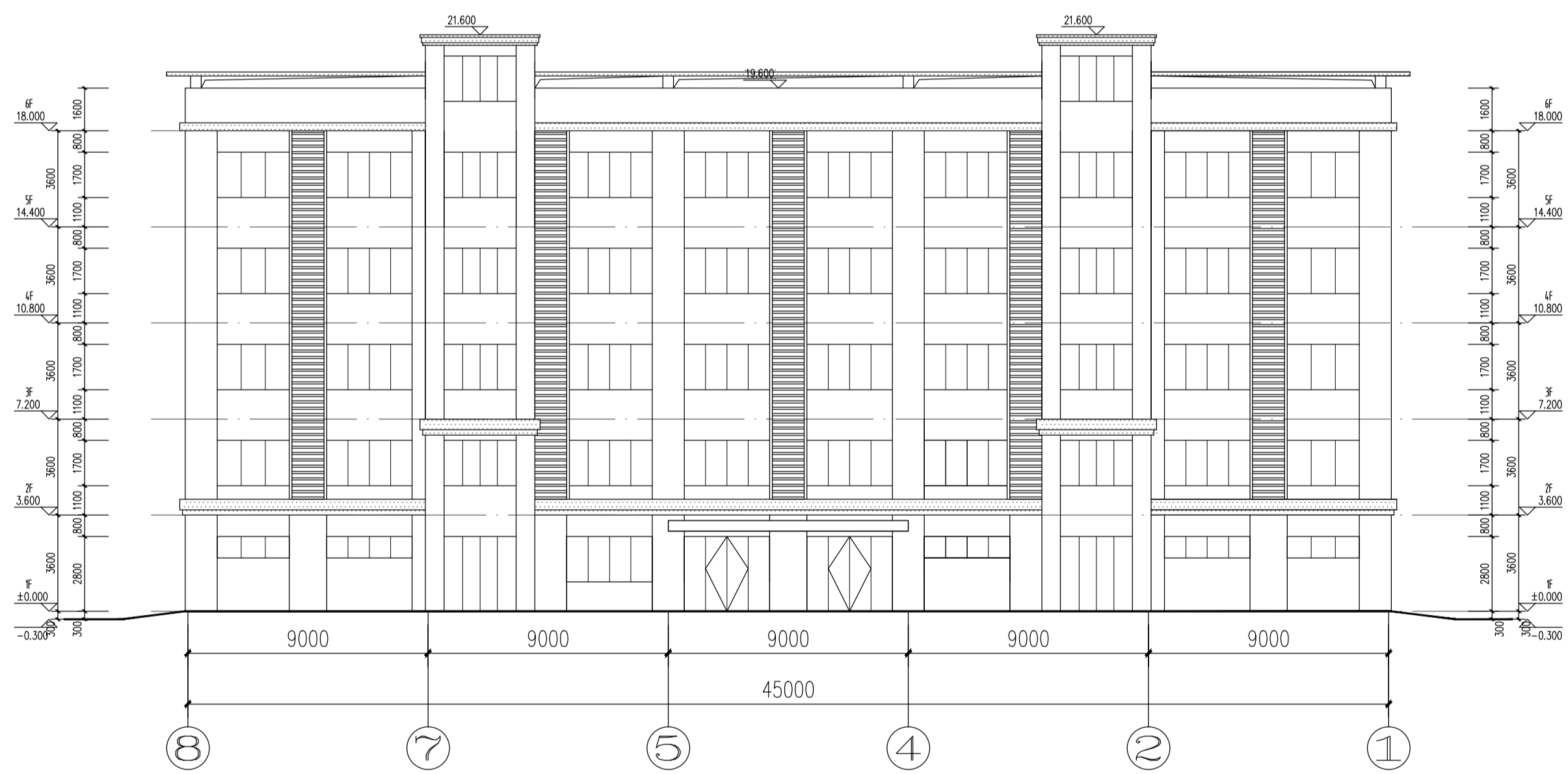
-  蓝色真石漆
-  米灰色真石漆
-  米灰色防雨百叶



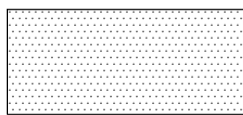
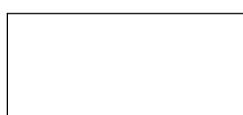
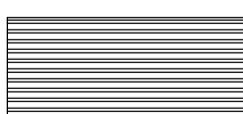
南立面 1:300



1-1剖面 1:300



北立面 1:300

-  蓝色真石漆
-  米灰色真石漆
-  米灰色防雨百叶