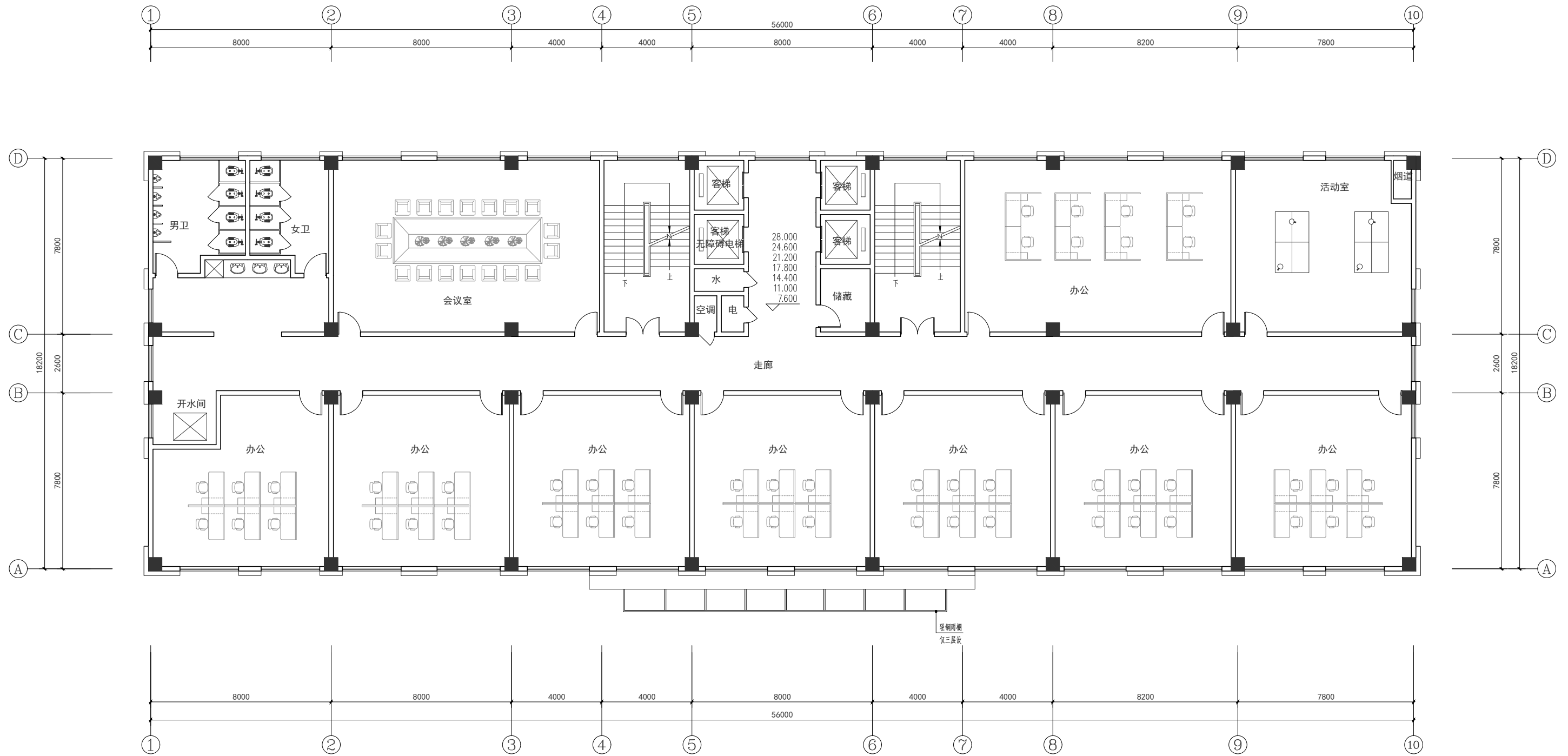


1# 特种安装技术研发中心

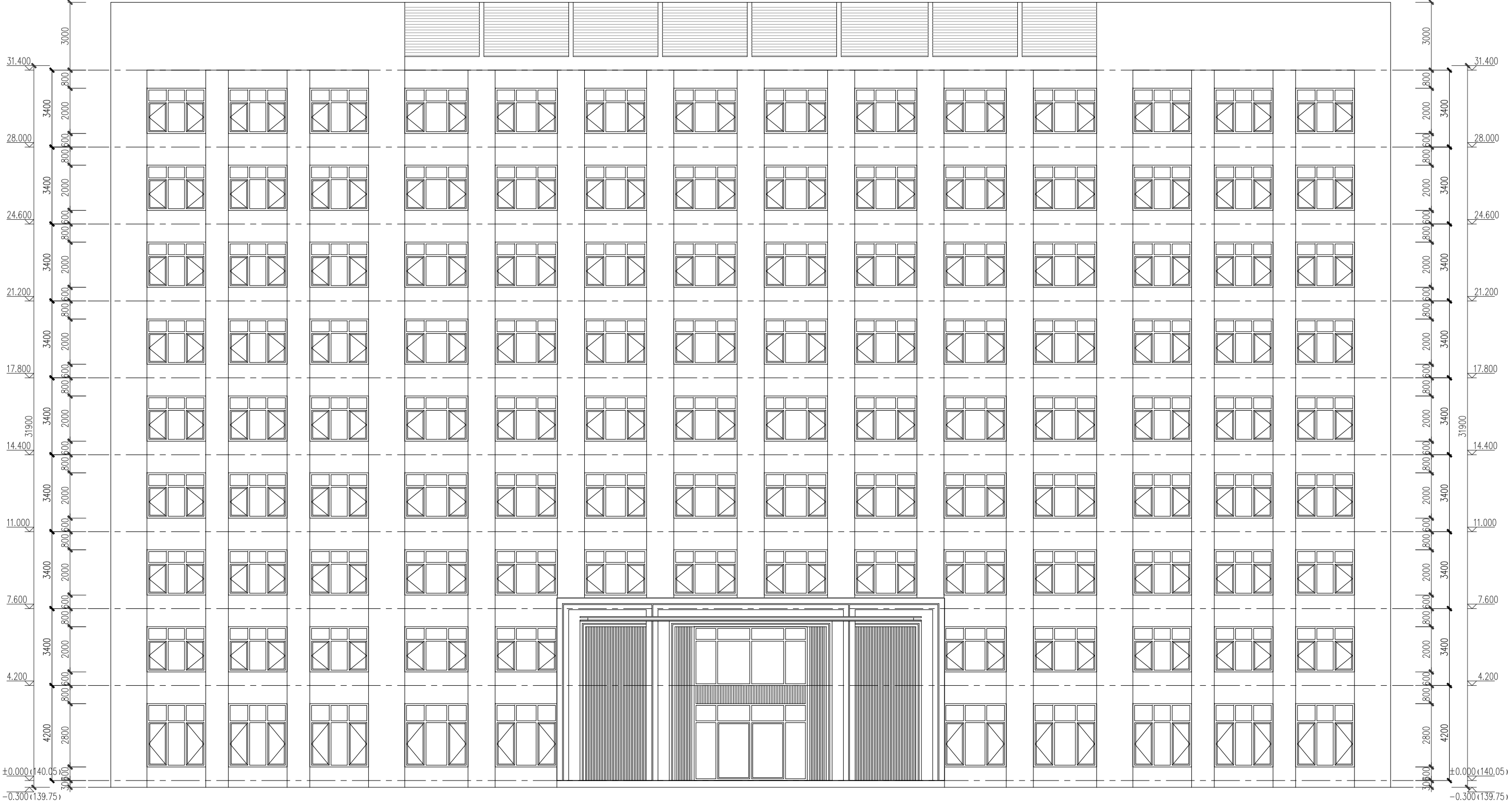


三-九层平面图 1:100

本层建筑面积: 1044.54m²

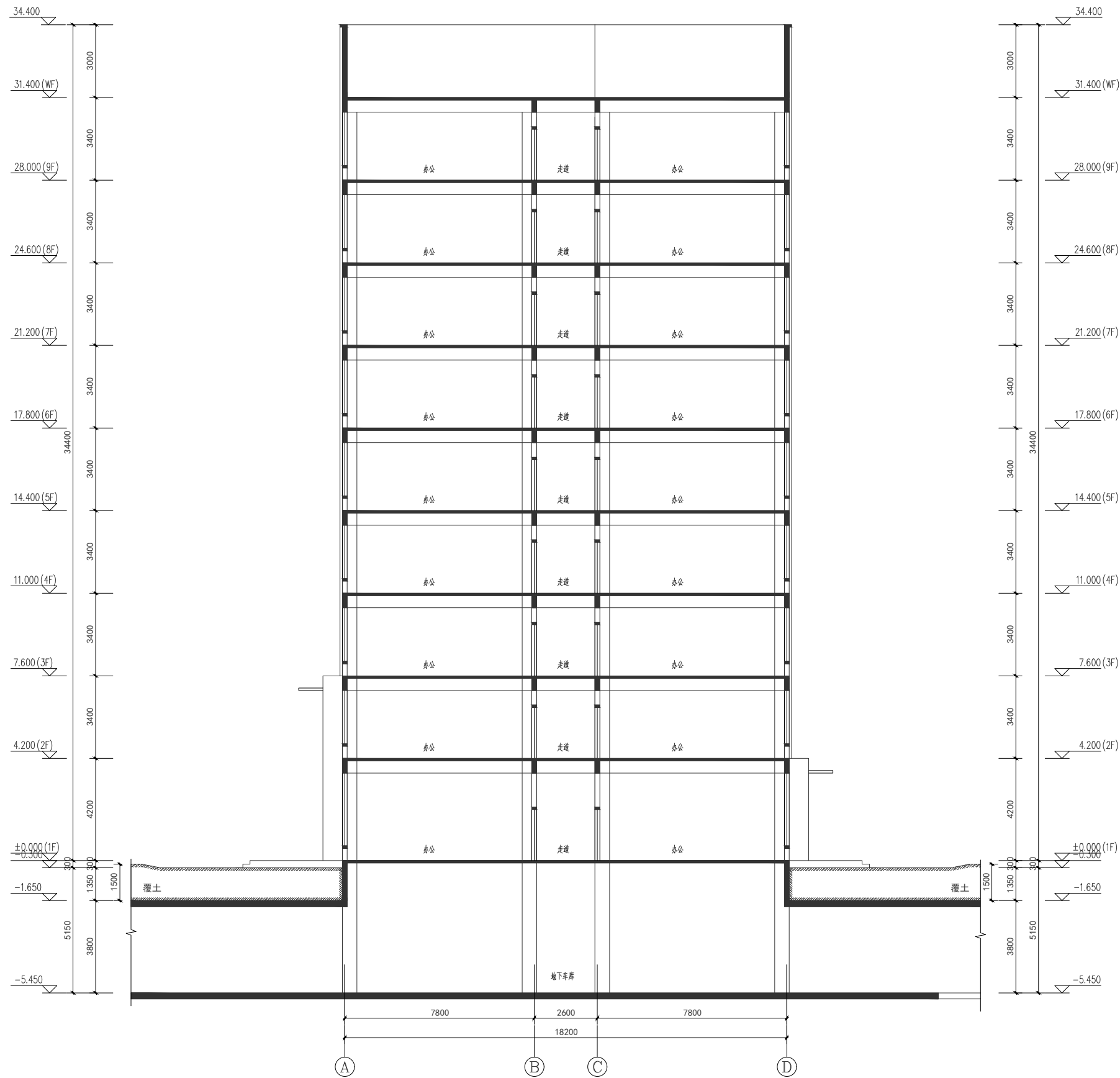
轻钢雨棚
仅三层设

1#特种安装技术研发中心



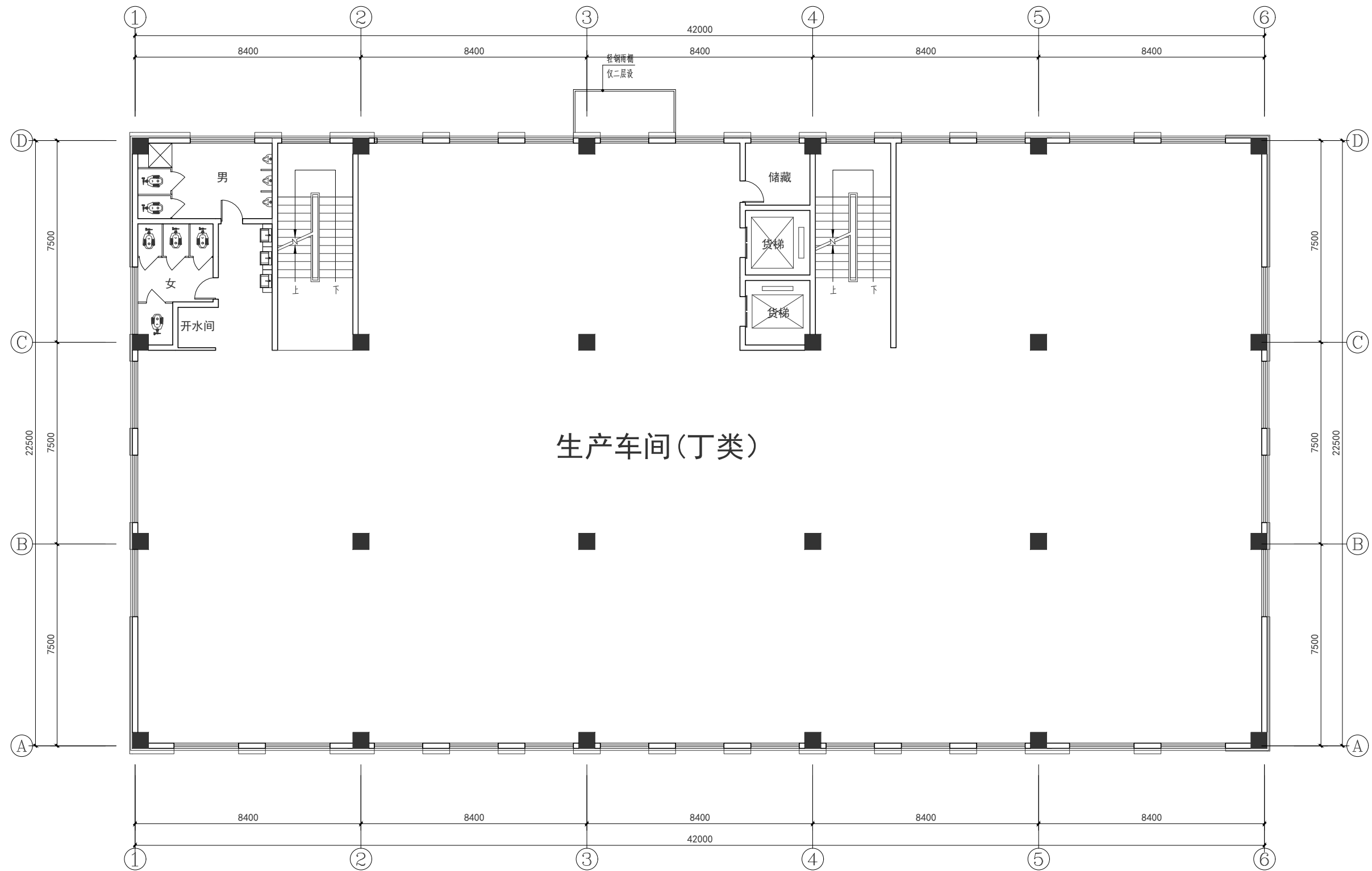
1~9轴立面图 1:100

1# 特种安装技术研发中心



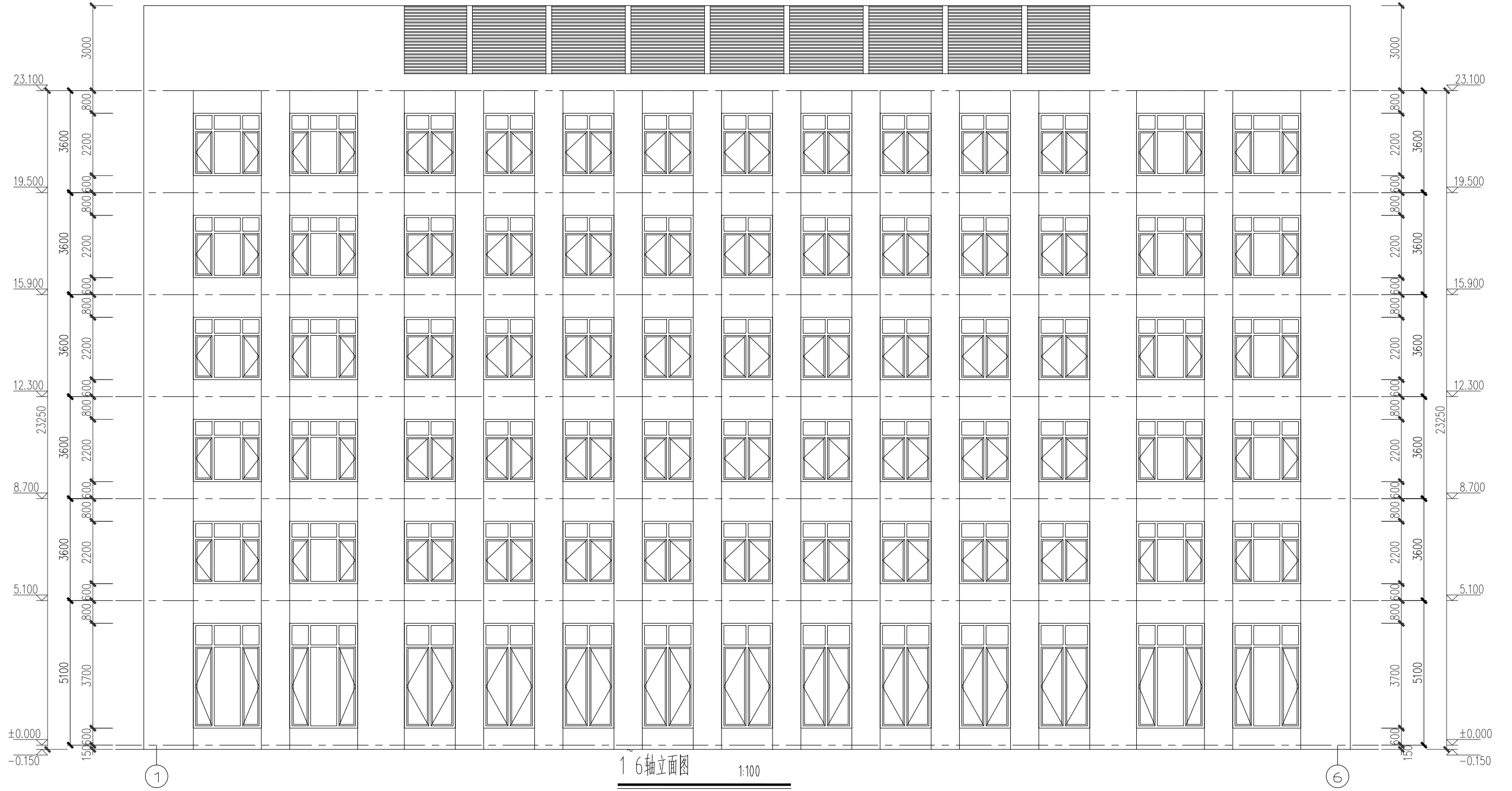
1-1剖面图 1:100

2#生产厂房

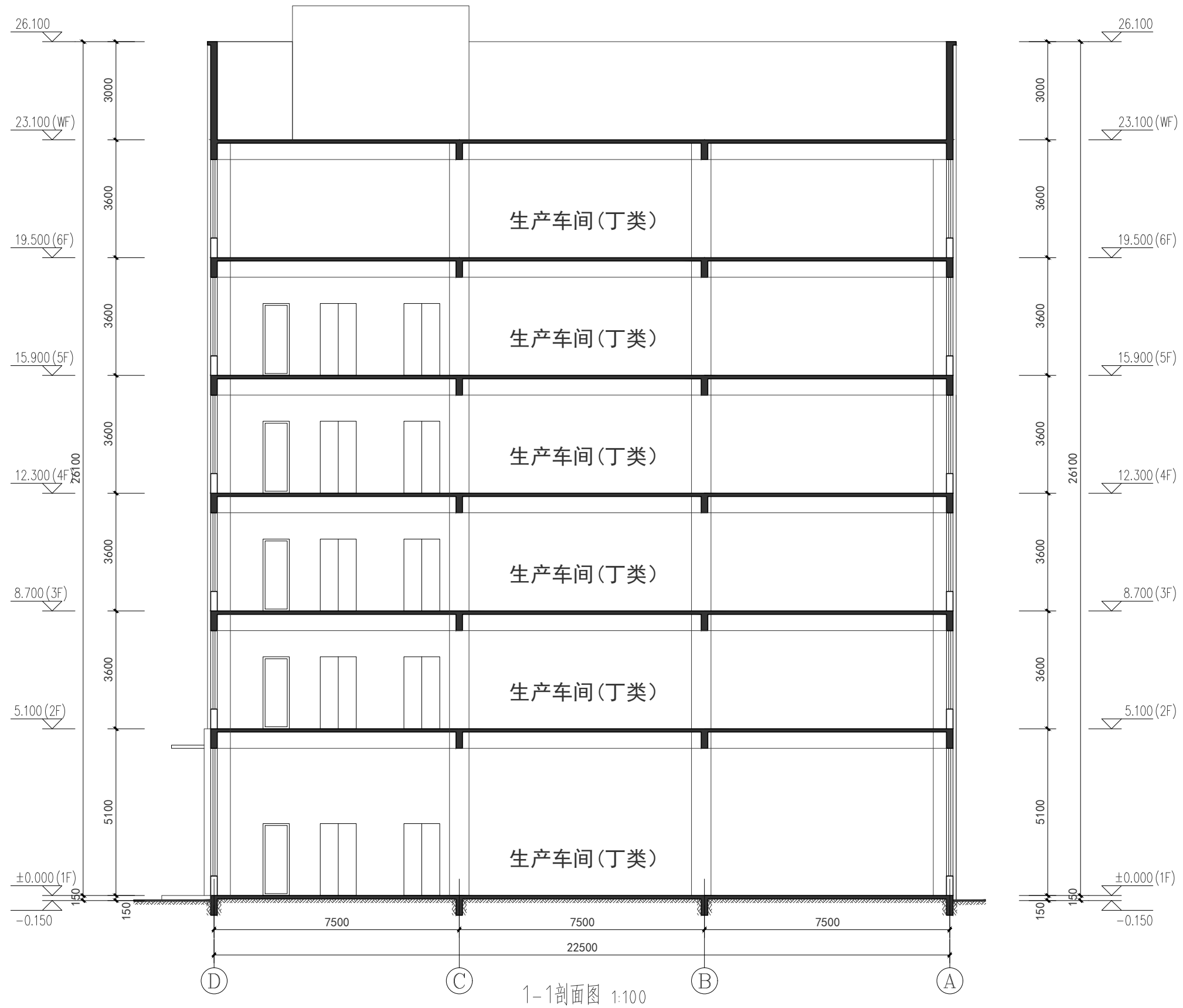


二至六层平面图 1:100
本层建筑面积: 967.05平方米

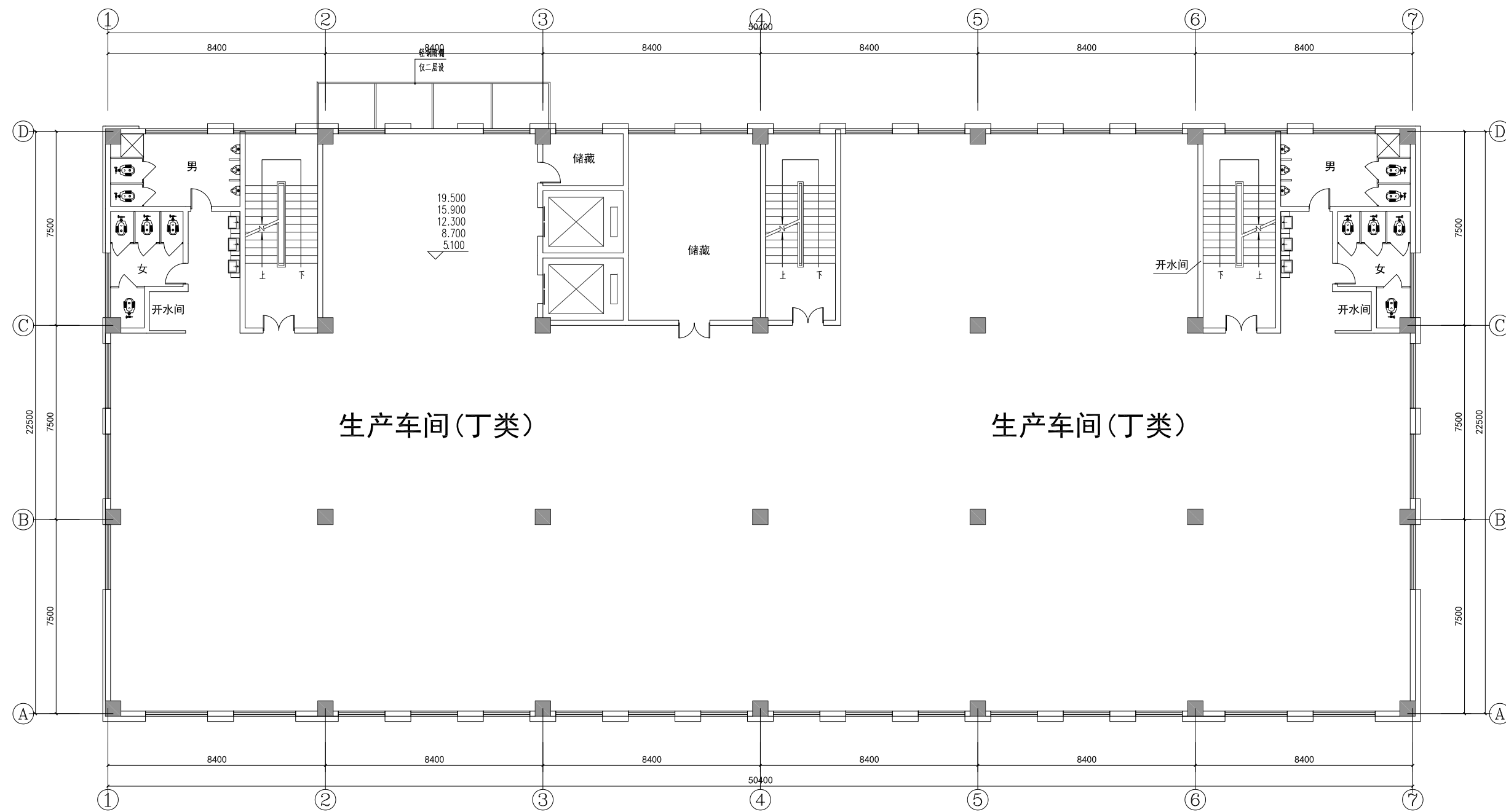
2#生产厂房



2#生产厂房

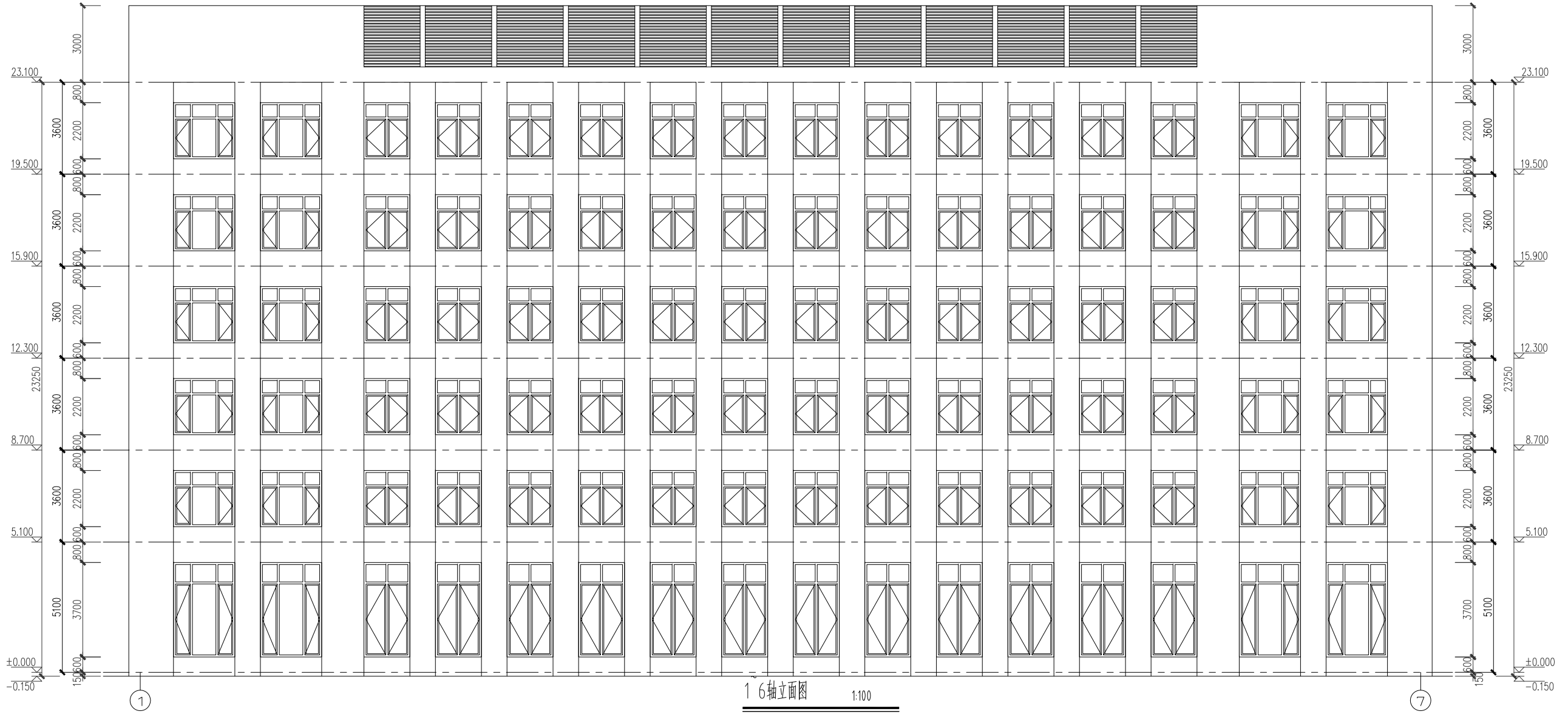


3#生产厂房

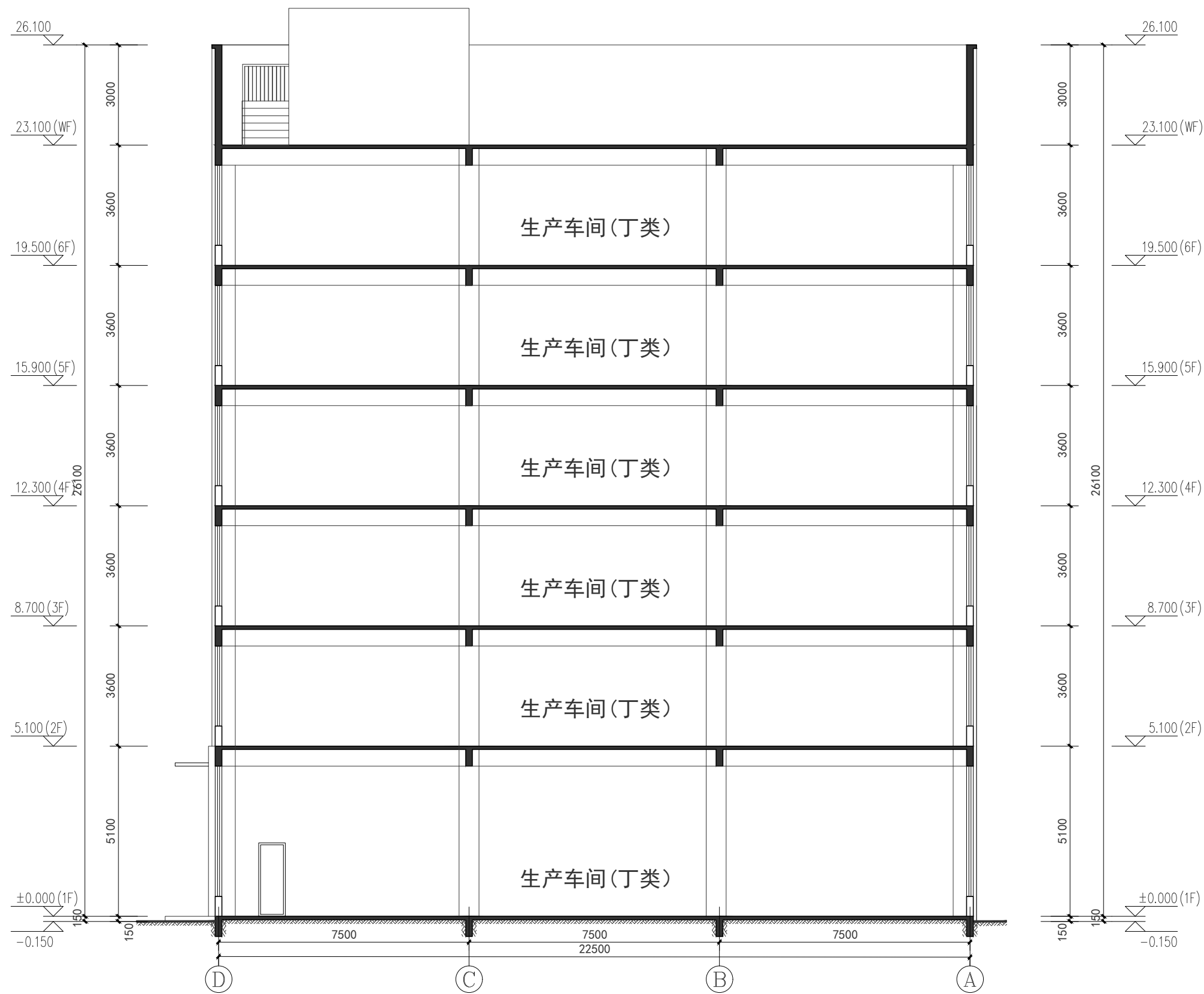


二至六层平面图 1:100
本层建筑面积: 1158.90m²

3#生产厂房

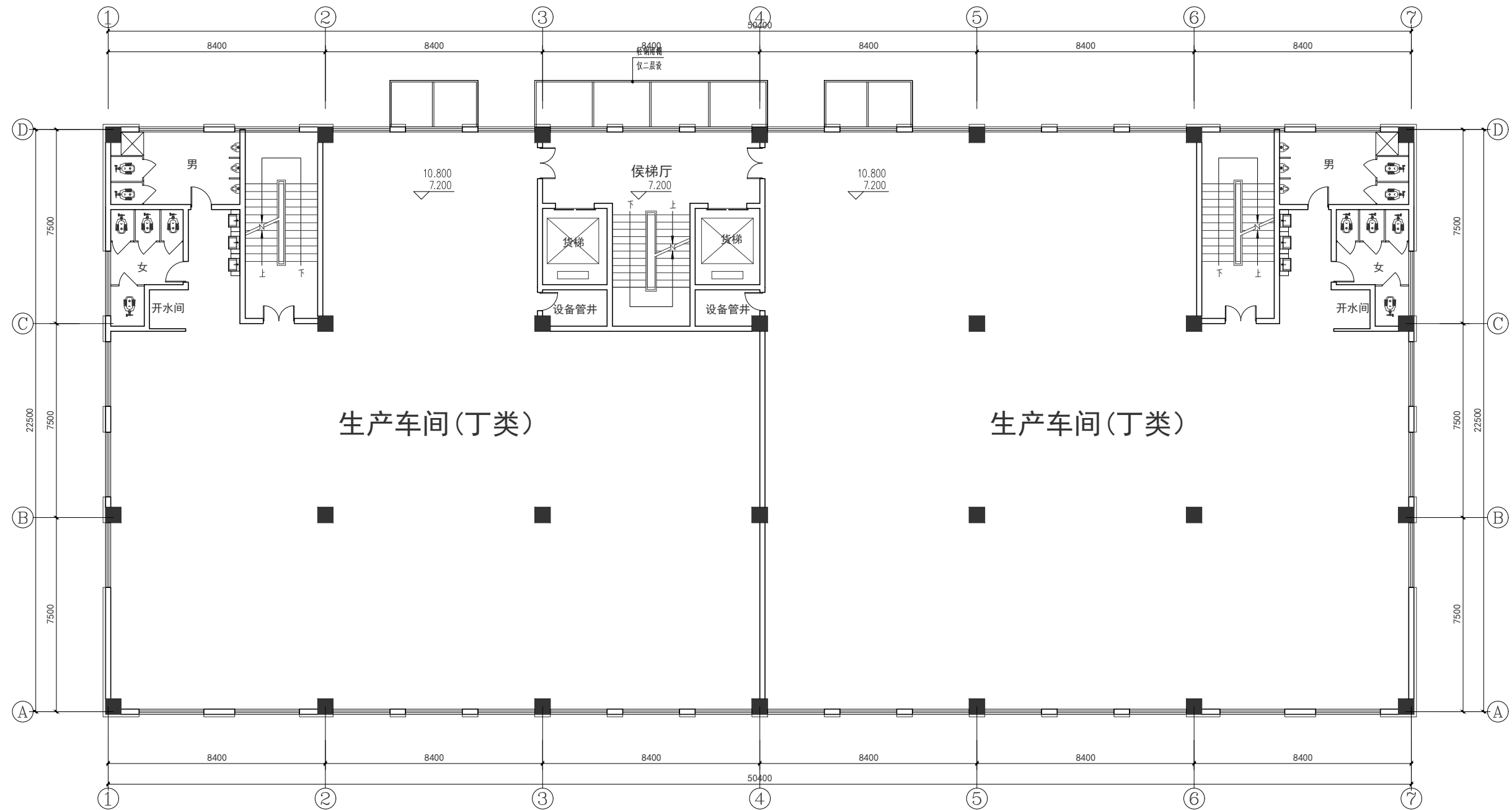


3#生产厂房



1-1剖面图 1:100

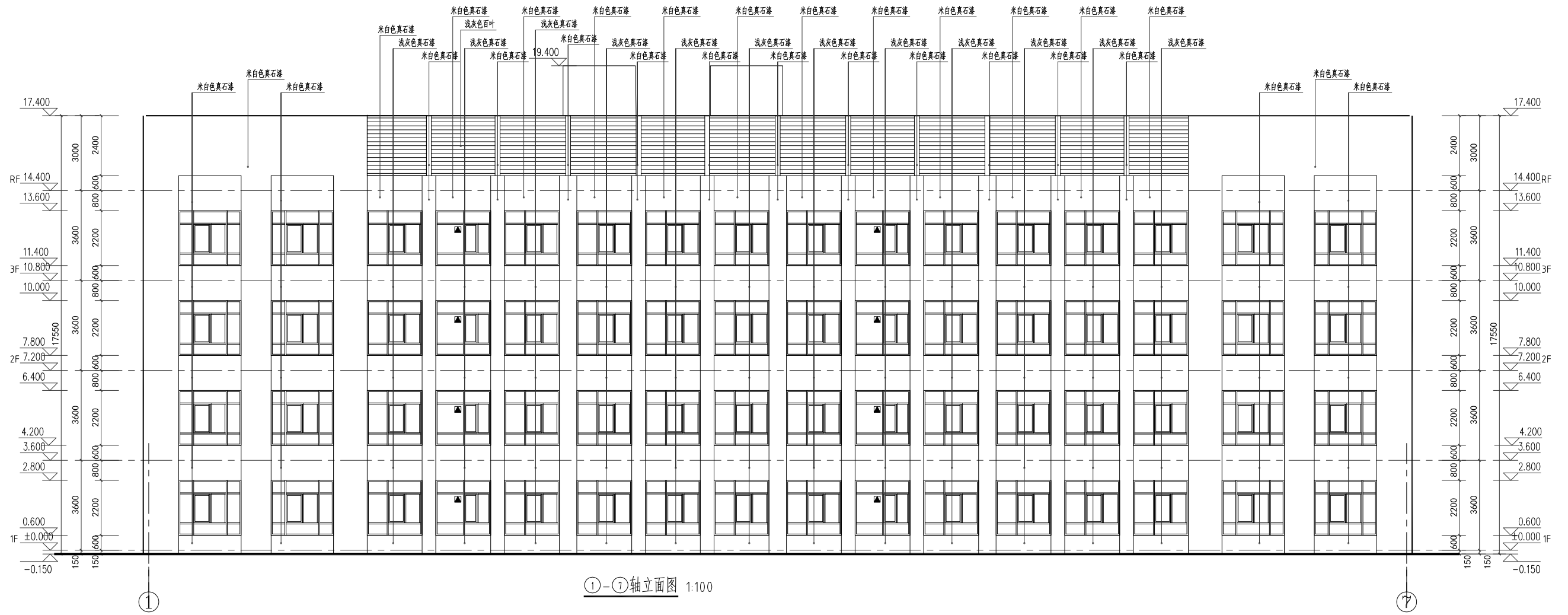
5#9#10#13#生产厂房



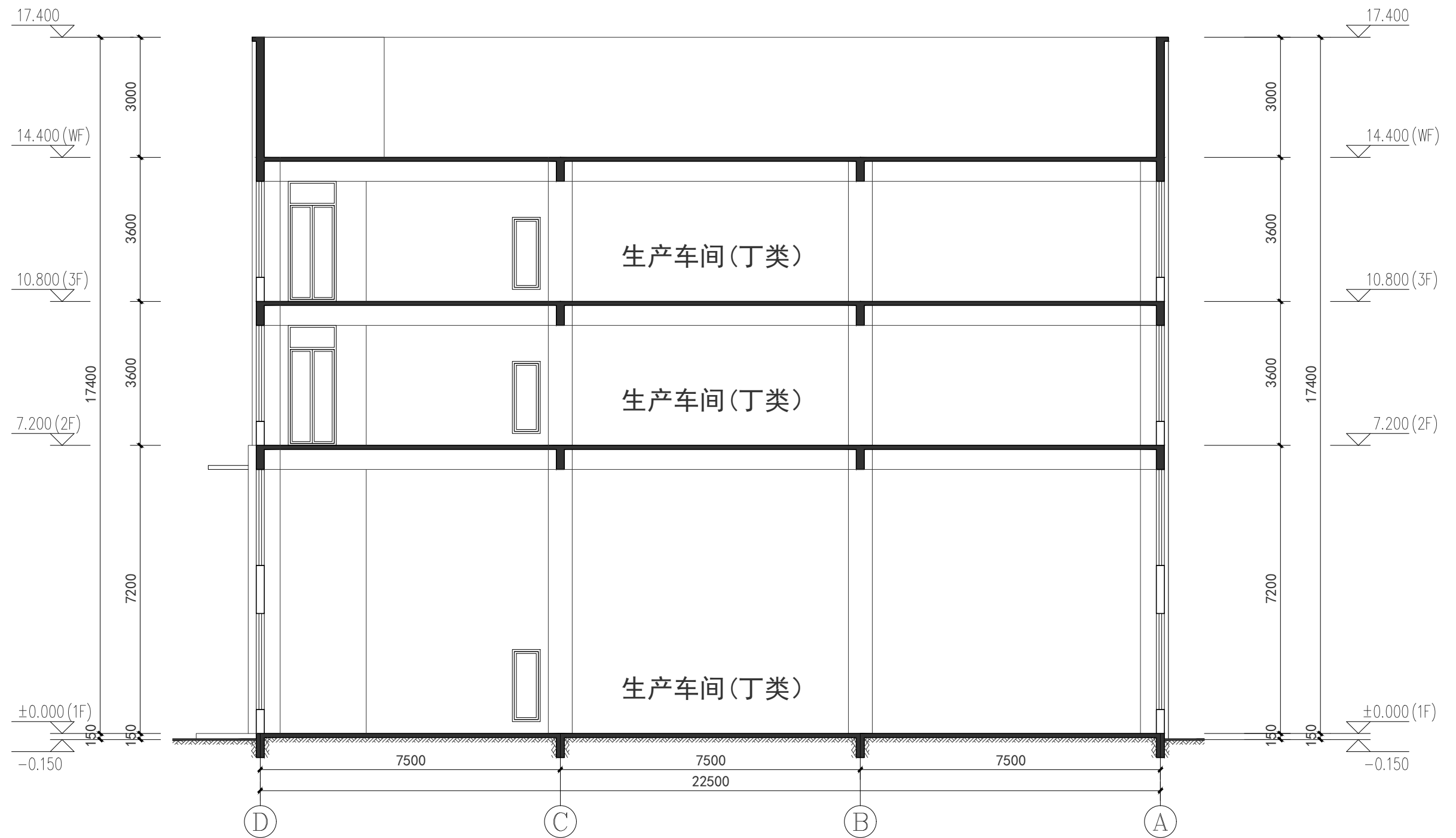
二层三层平面图 1:100

本层建筑面积: 1158.90m²

5#9#10#13#生产厂房

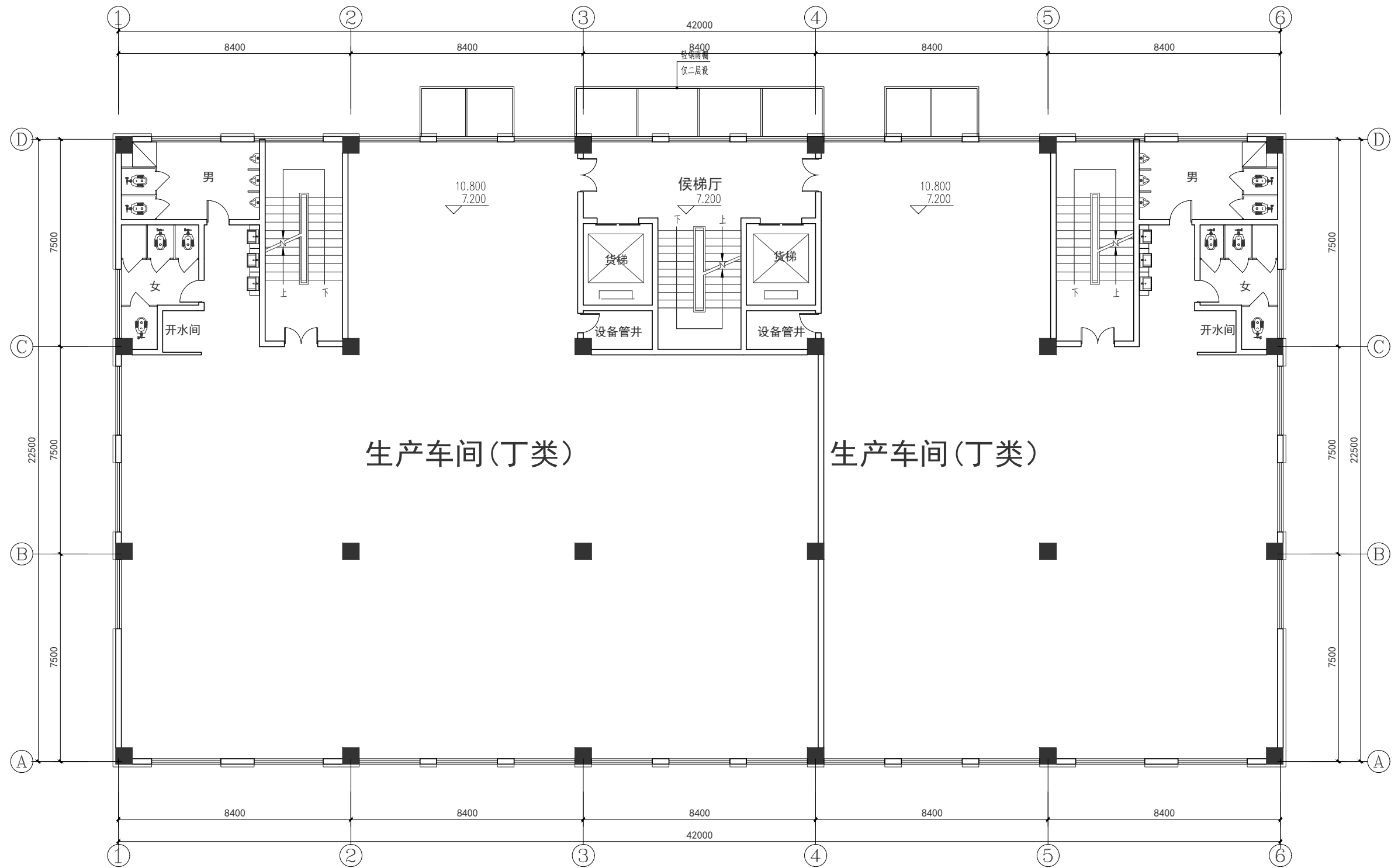


5#9#10#13#生产厂房



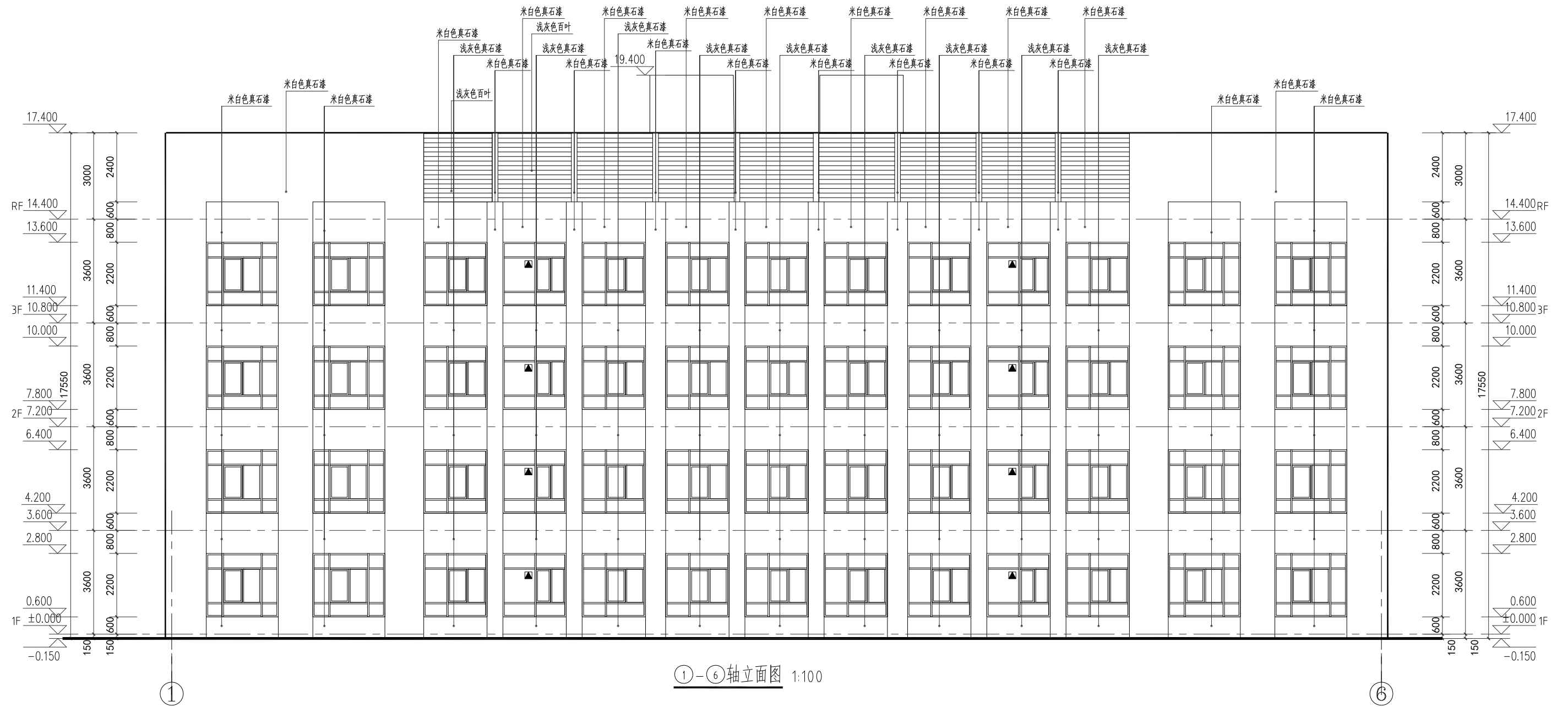
1-1剖面图 1:100

6#8#11#15#生产厂房

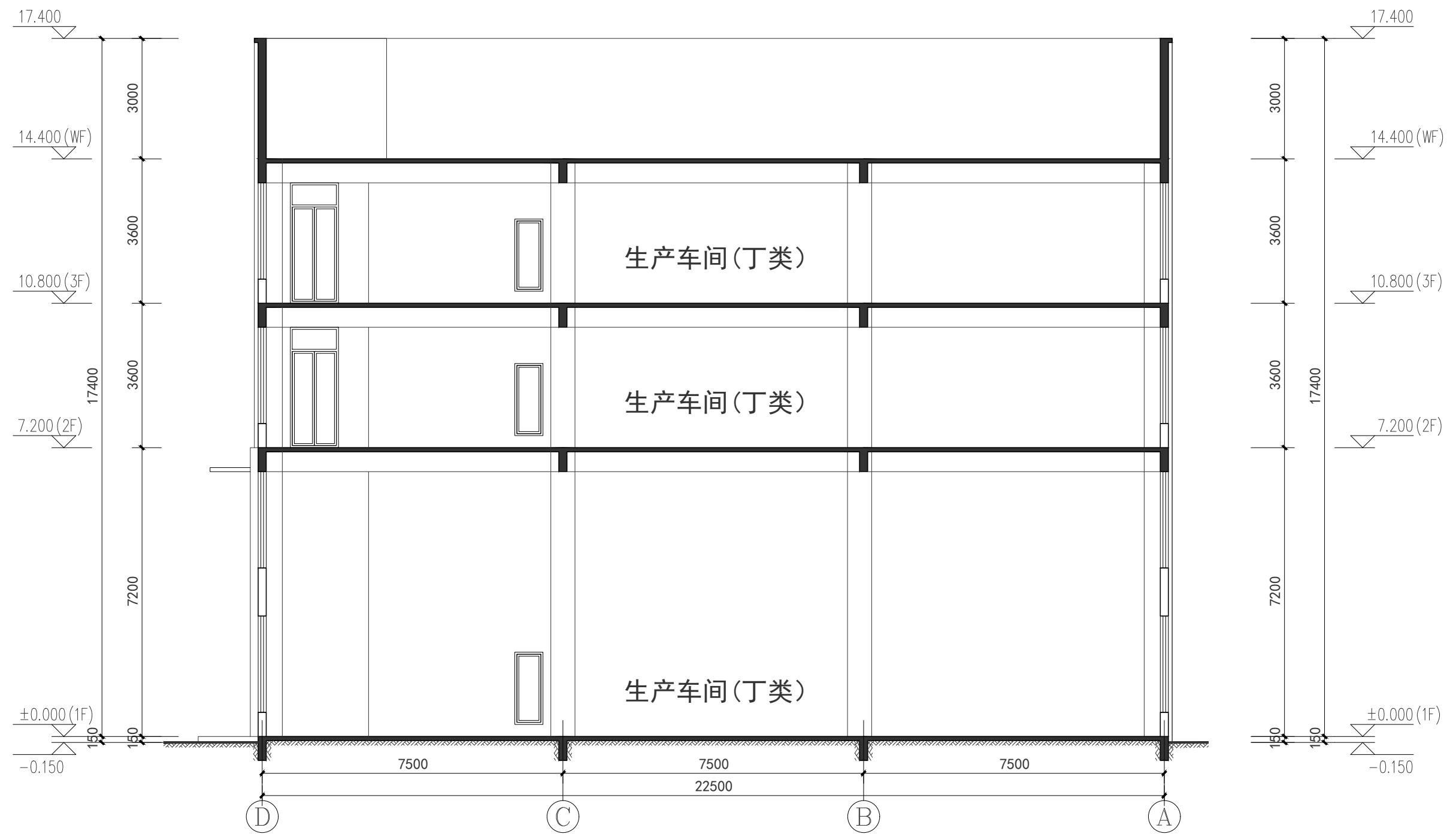


二层三层平面图 1:100
本层建筑面积: 967.05平方米

6#8#11#15#生产厂房

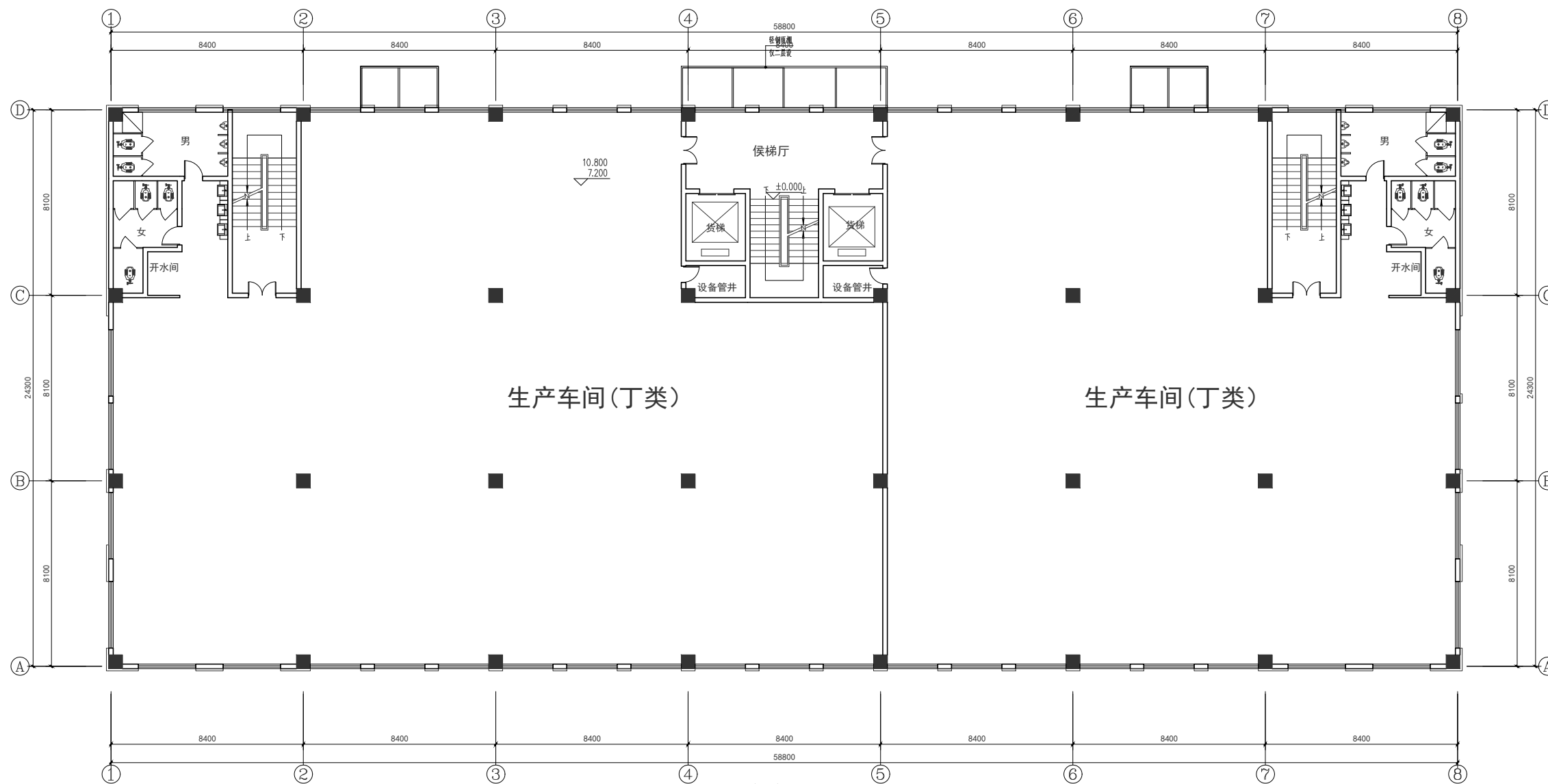


6#8#11#15#生产厂房



1-1剖面图 1:100

7#12#生产厂房



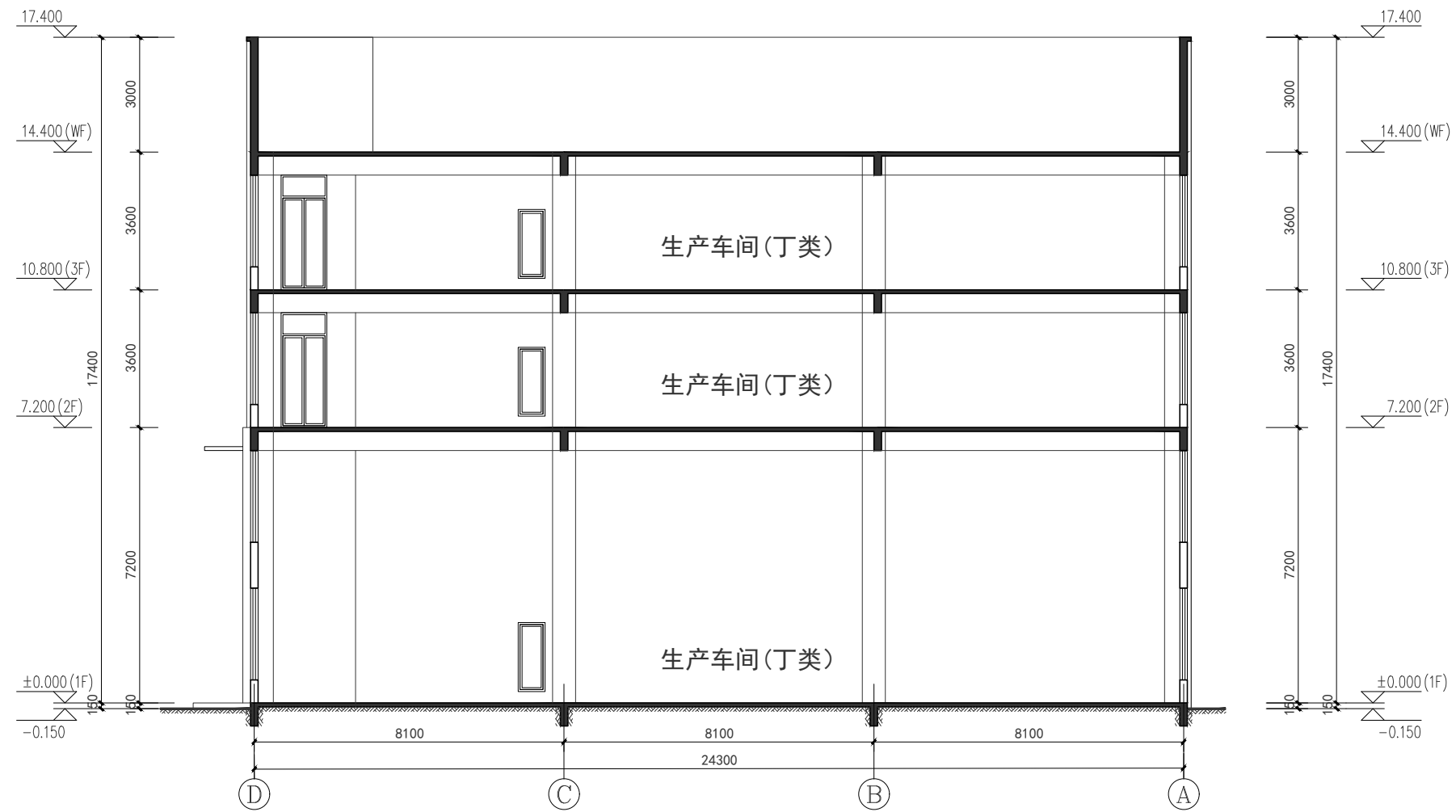
二层三层平面图 1:100
本层建筑面积: 1457.21m²

7#12#生产厂房



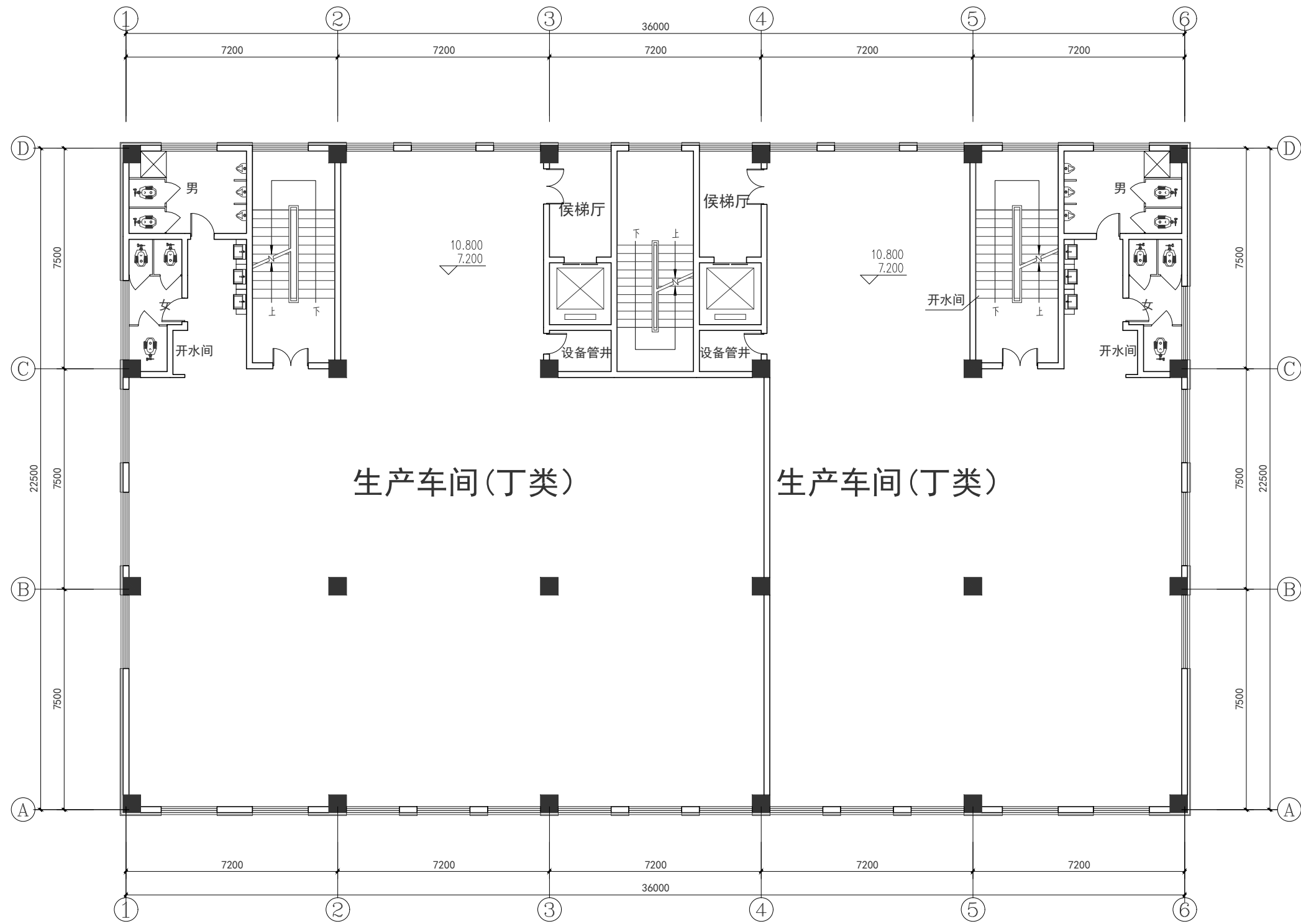
①-⑧立面图 1:100

7#12#生产厂房



1-1剖面图 1:100

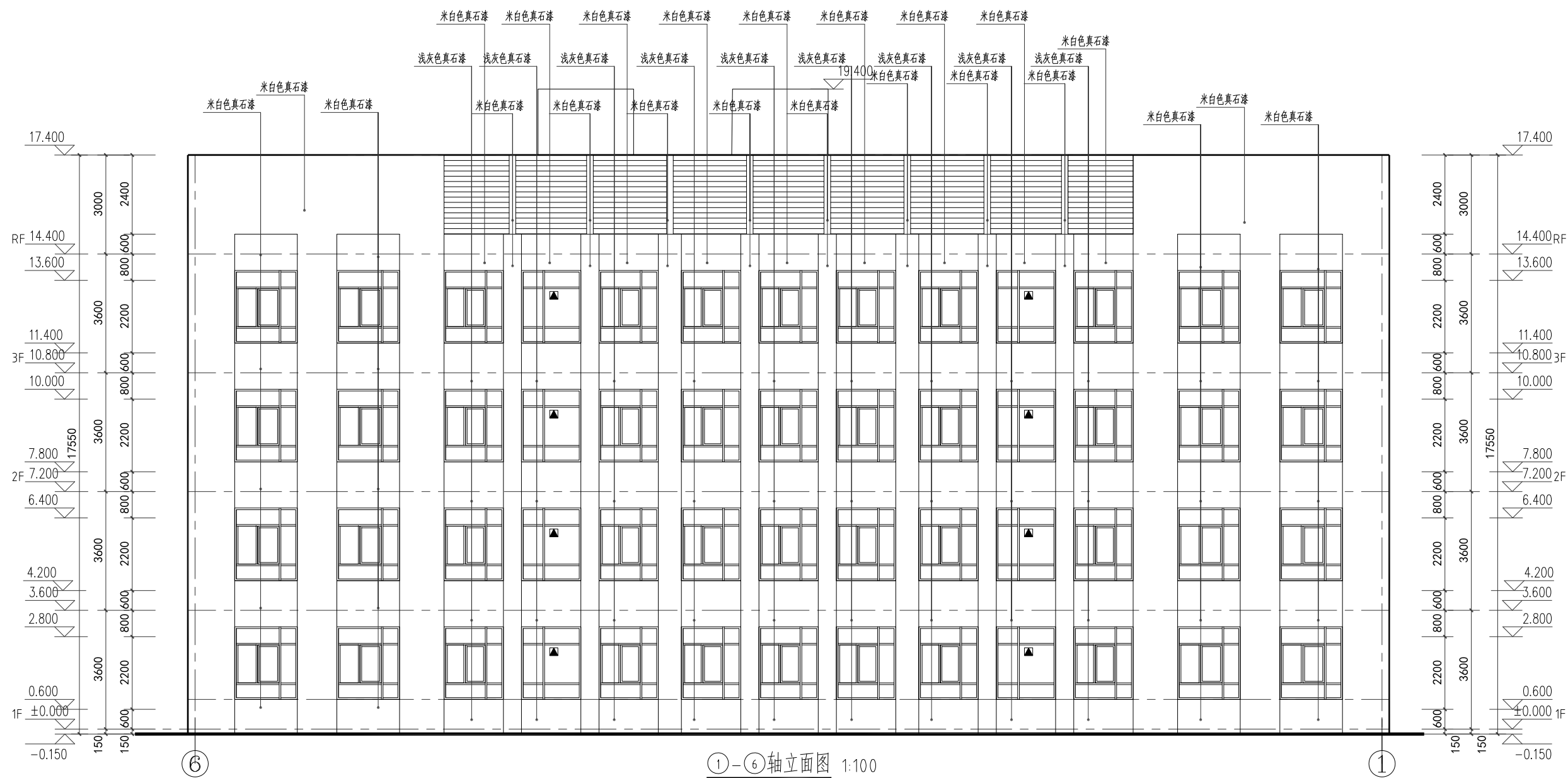
16#生产厂房



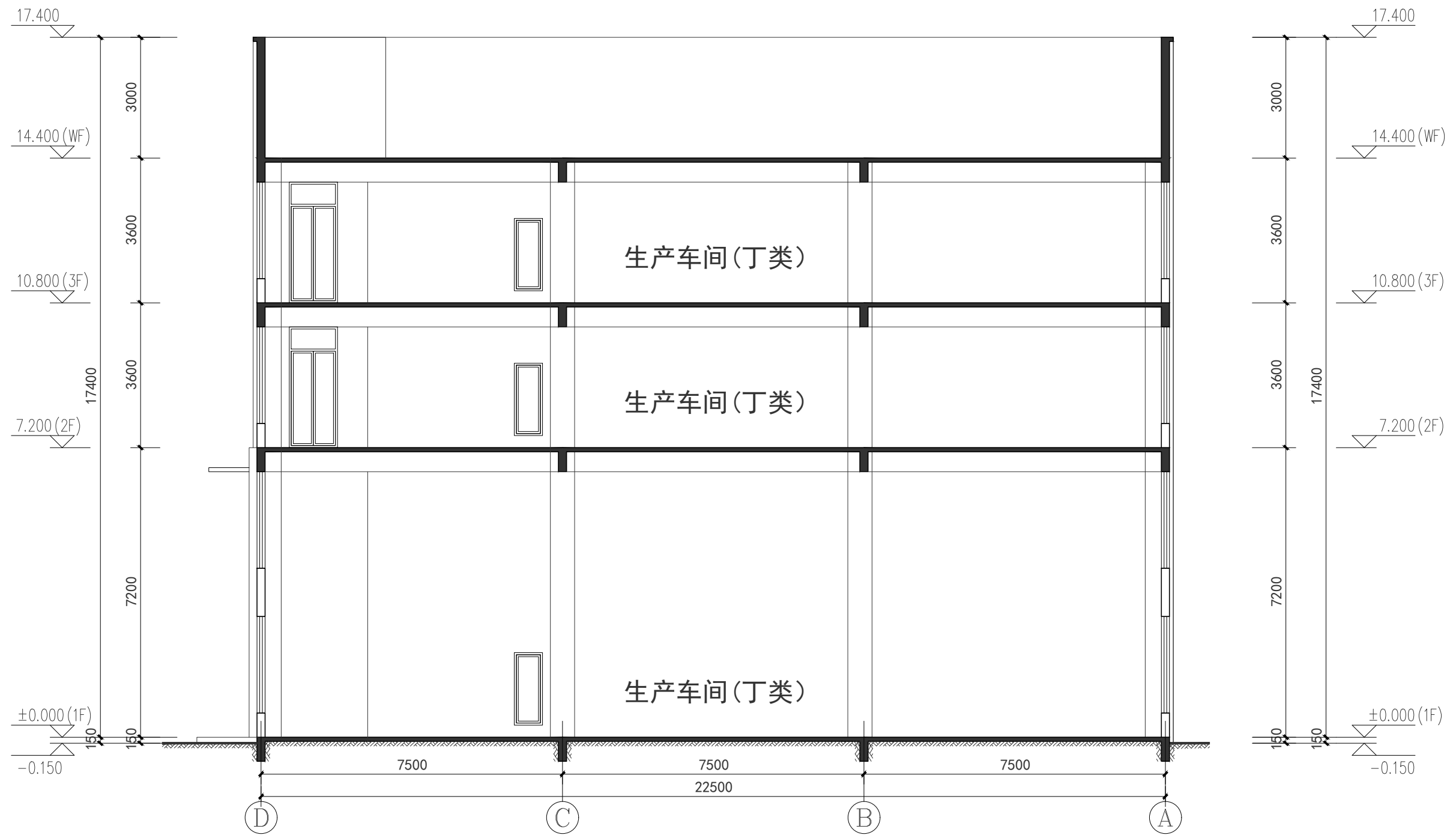
二层三层平面图 1:100

本层建筑面积: 830.01平方米

16#生产厂房



16#生产厂房



1-1剖面图 1:100