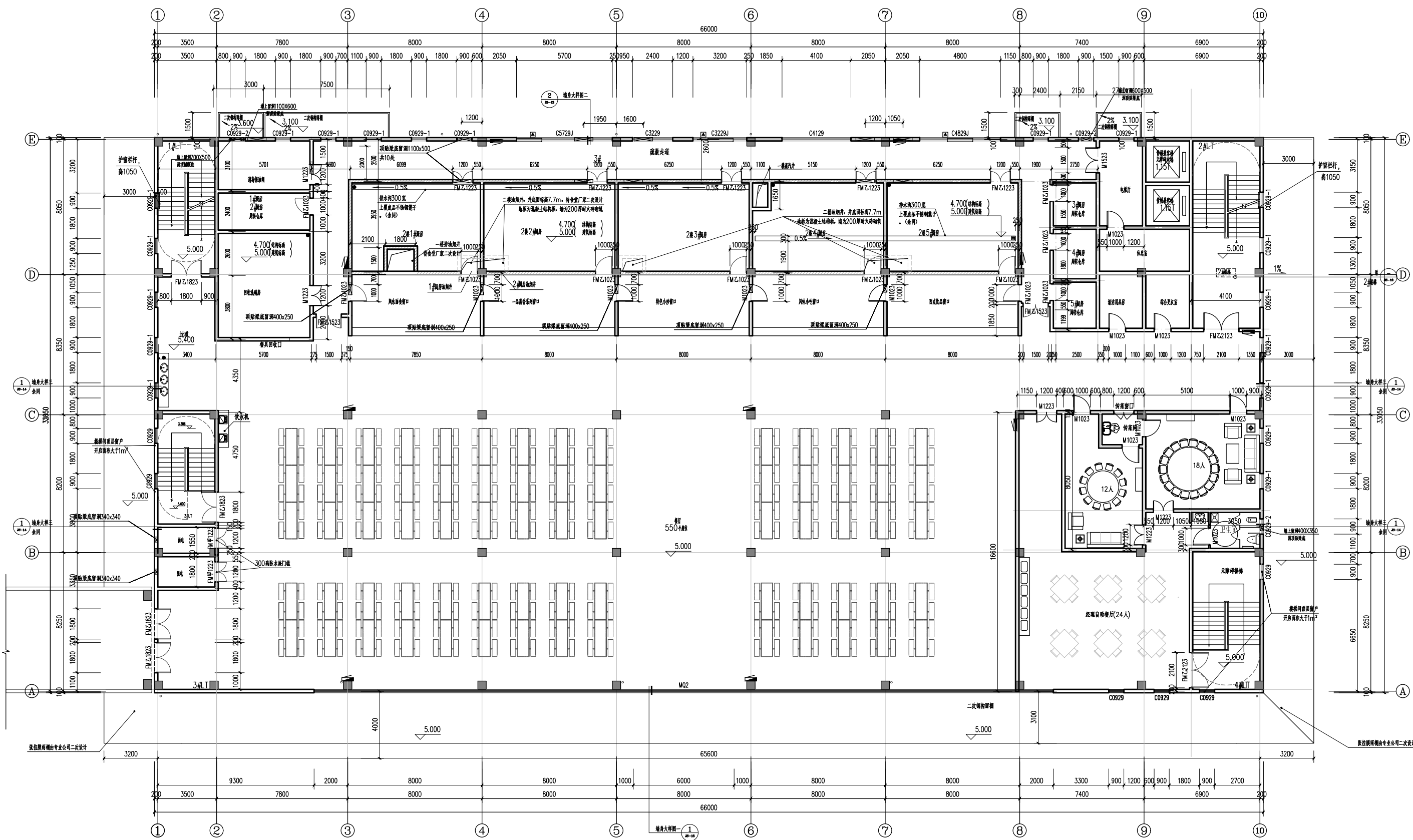


一层平面图 1:100
 本层建筑面积: 2198.64m²
 本栋总建筑面积: 4507.74m²

墙体厚度不计2个单元面积

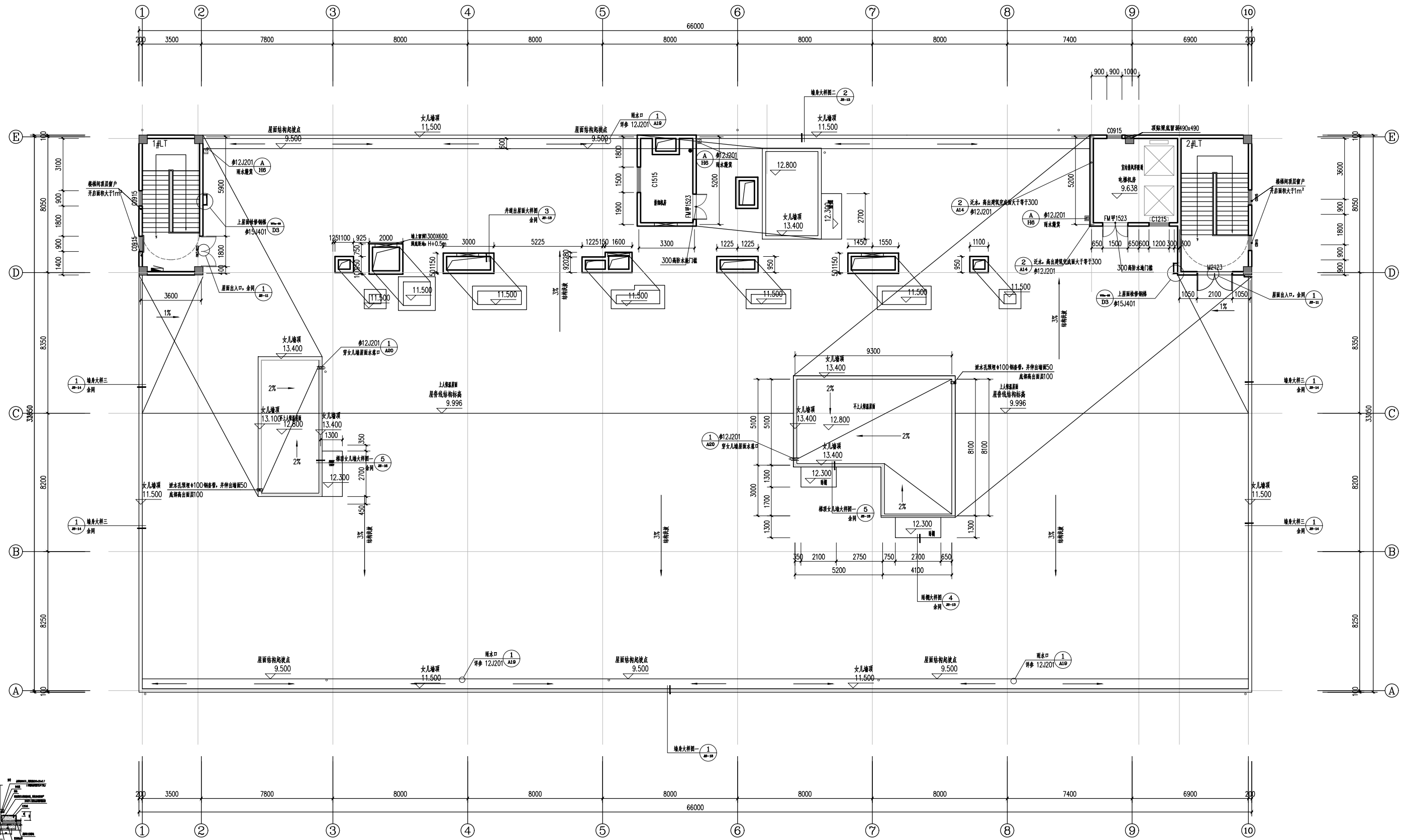


二层平面图 1:100

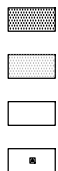
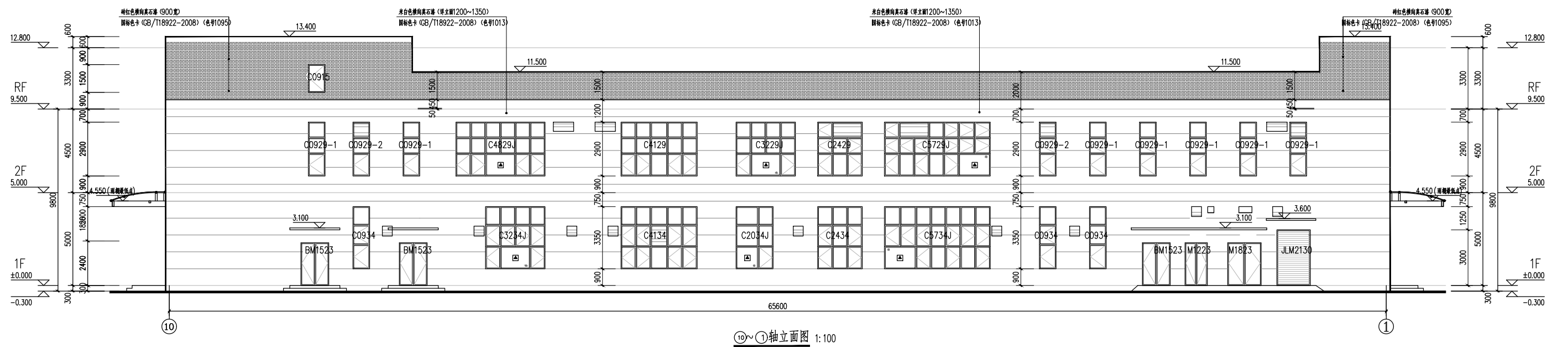
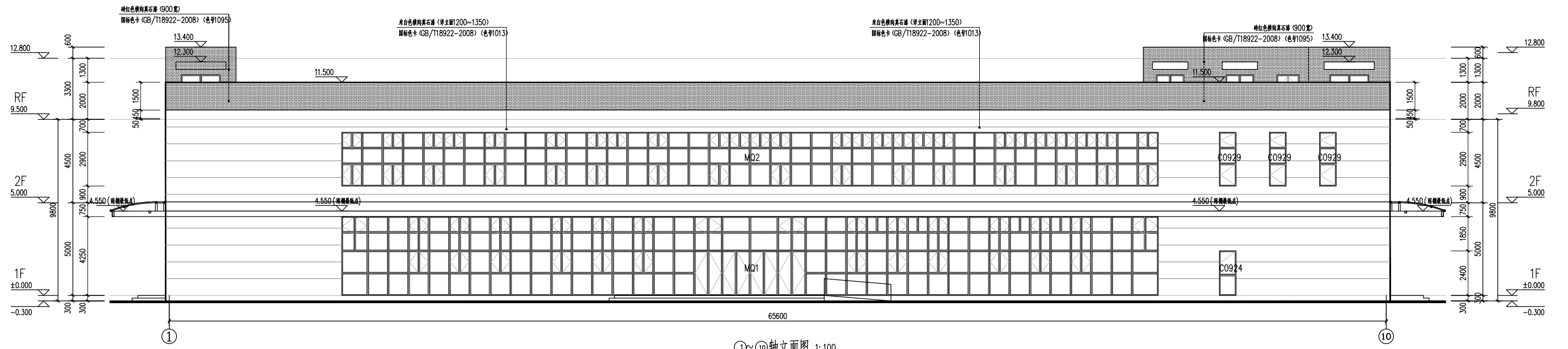
本层建筑面积: 2185.14m²

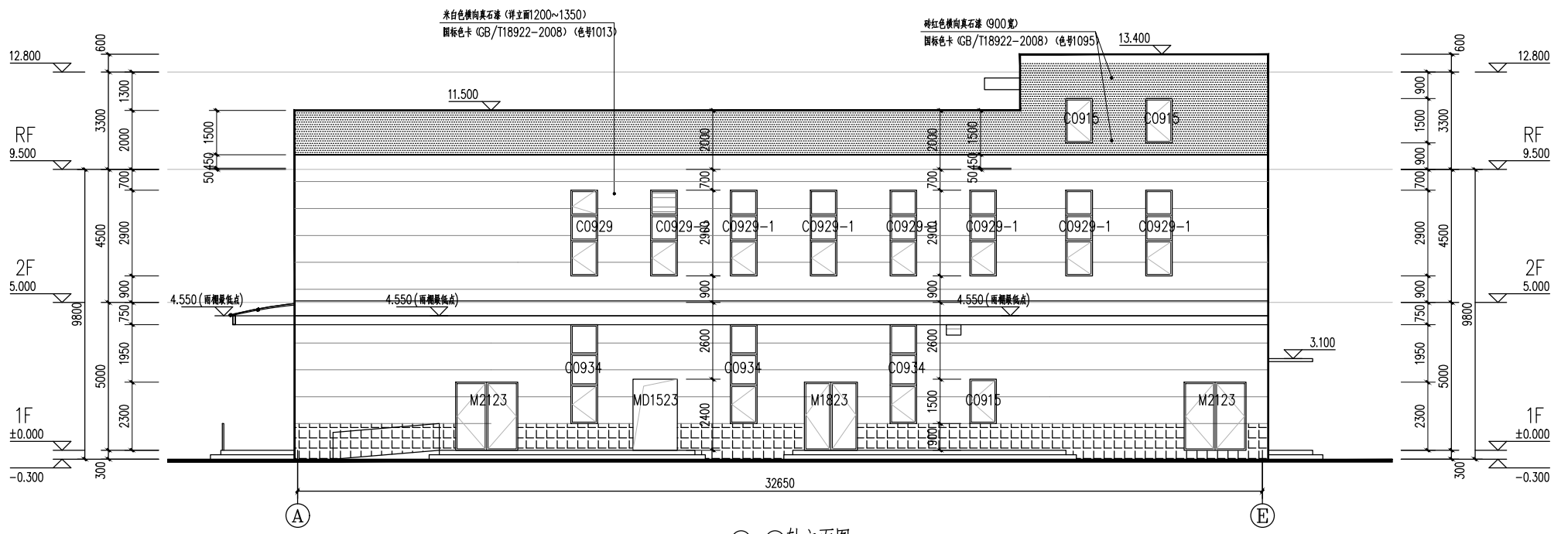
疏散宽度计算: 固定座位: 550+12+18+24= 604*1.1+100 (后厨不大于100人) *0.65/100=4.96m

设计疏散宽度: 1.525*2+1.825*2=6.7m

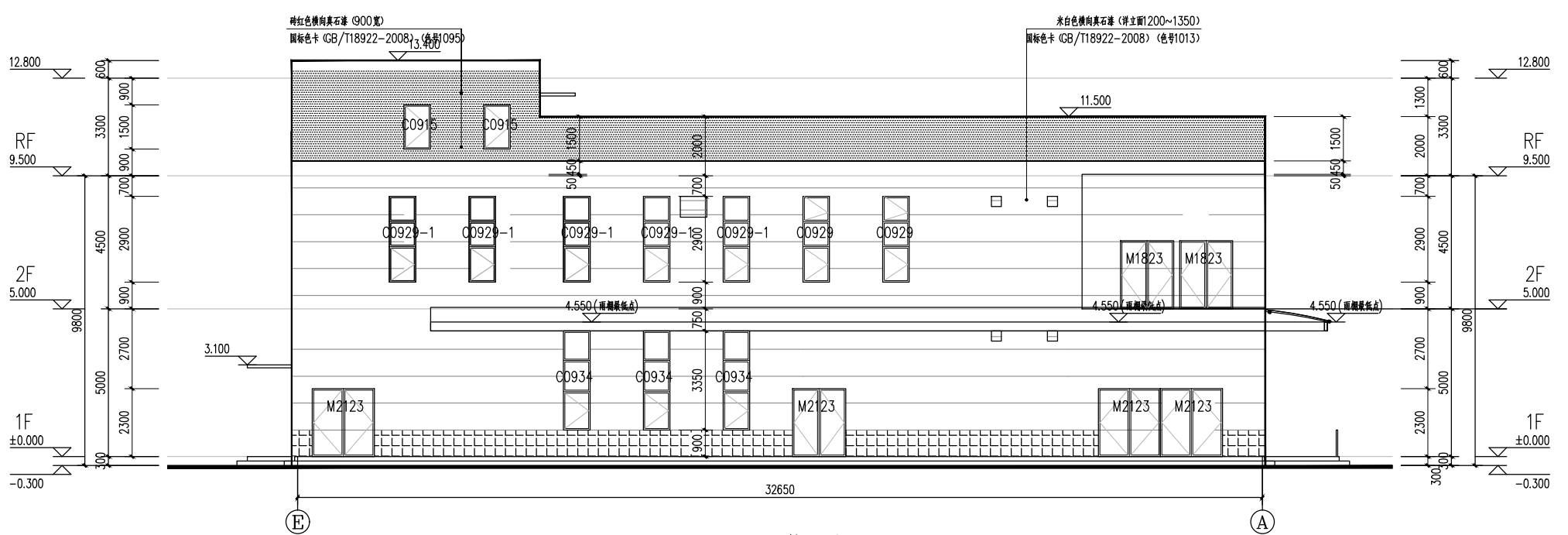


屋顶层平面图 1:100
 本层建筑面积: 123.96m²

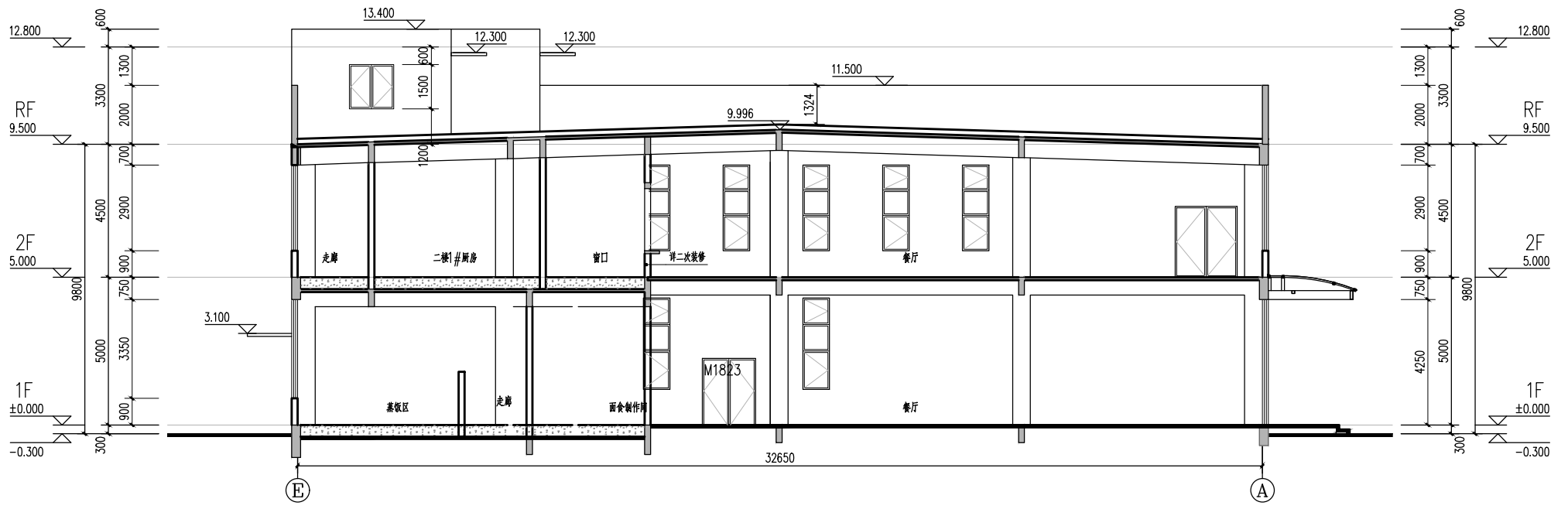
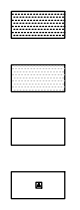




A~E轴立面图 1:100



E~A轴立面图 1:100



1-1剖面图 1:100