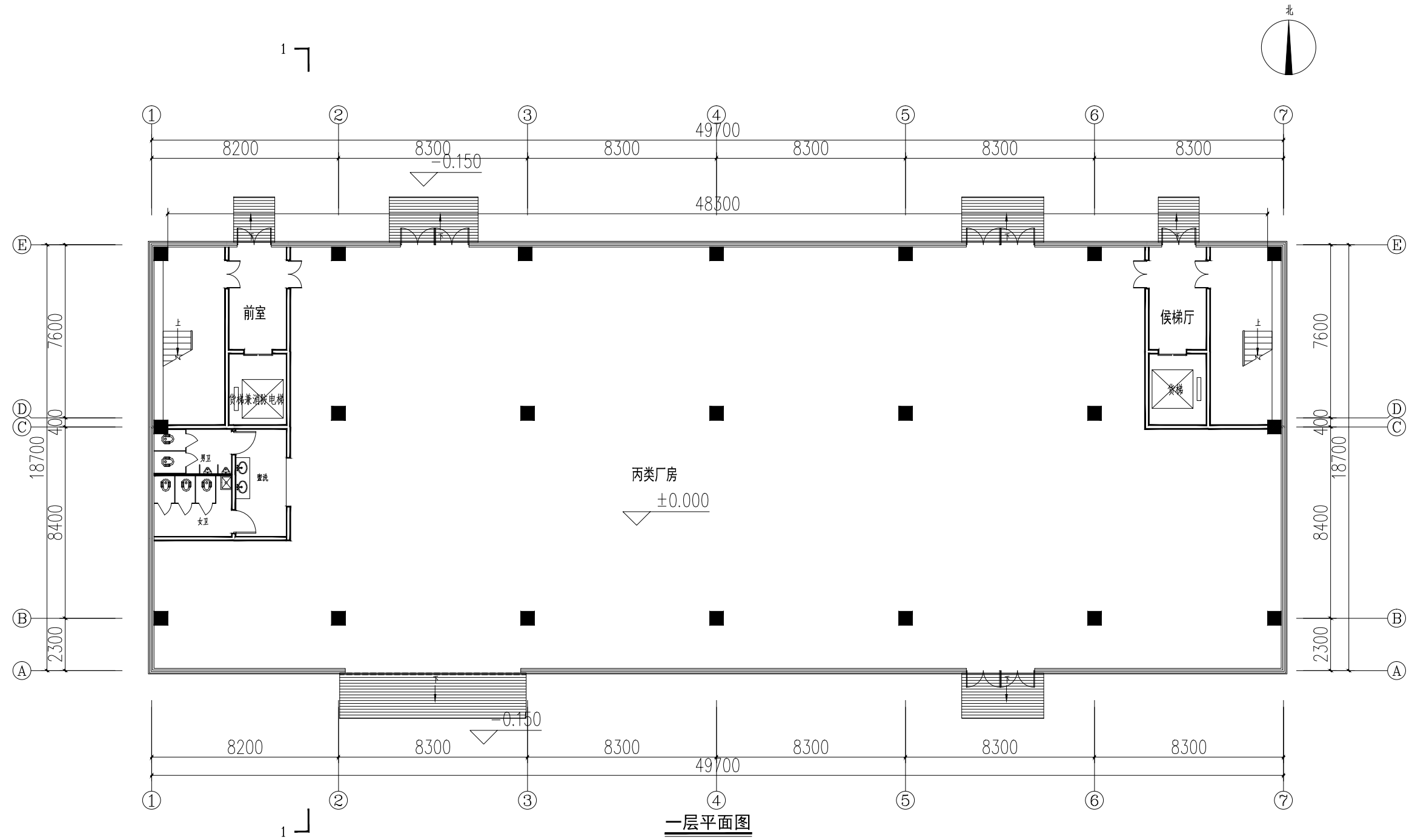
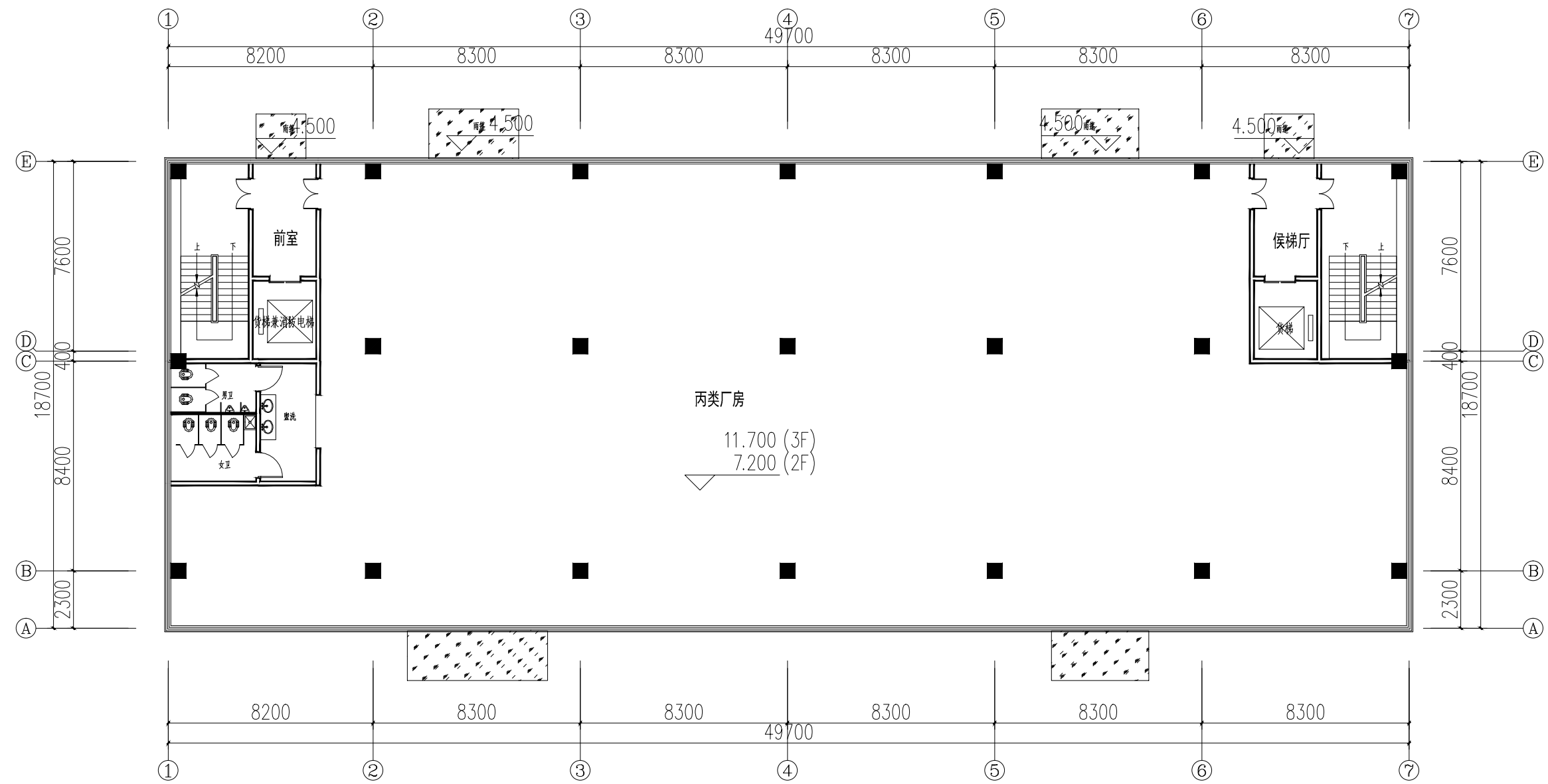


5#厂房

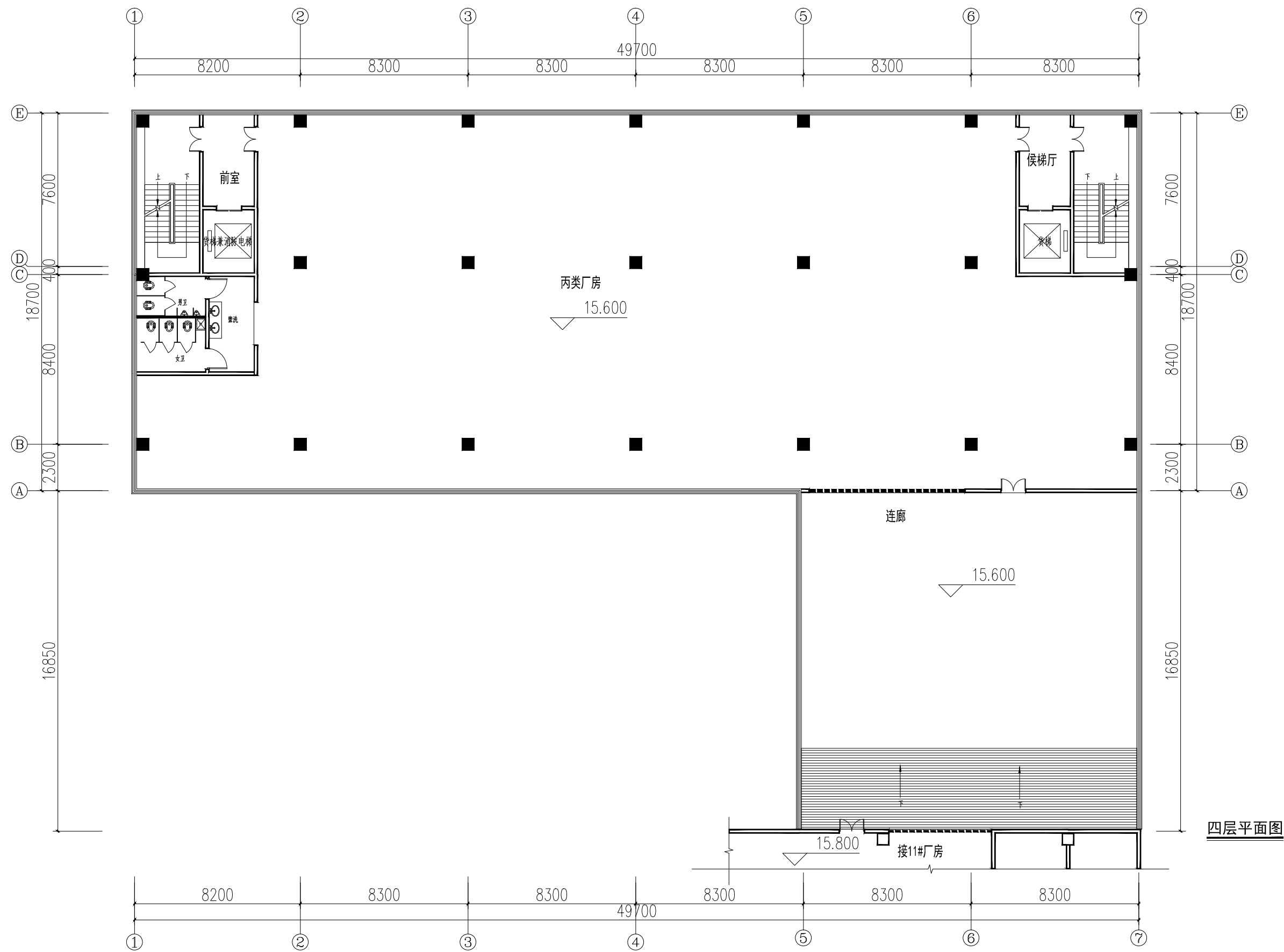


5#厂房



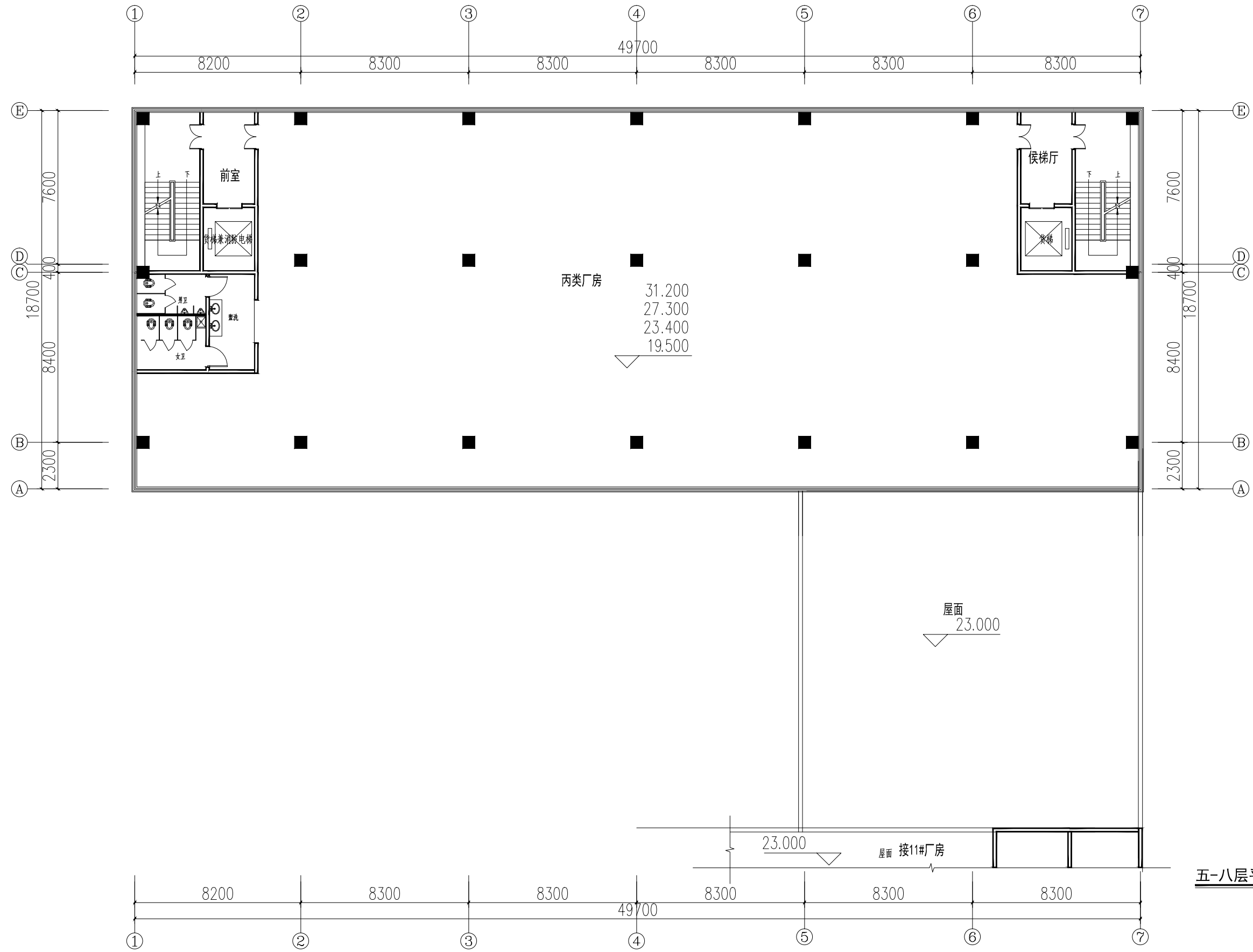
二-三层平面图

5#厂房



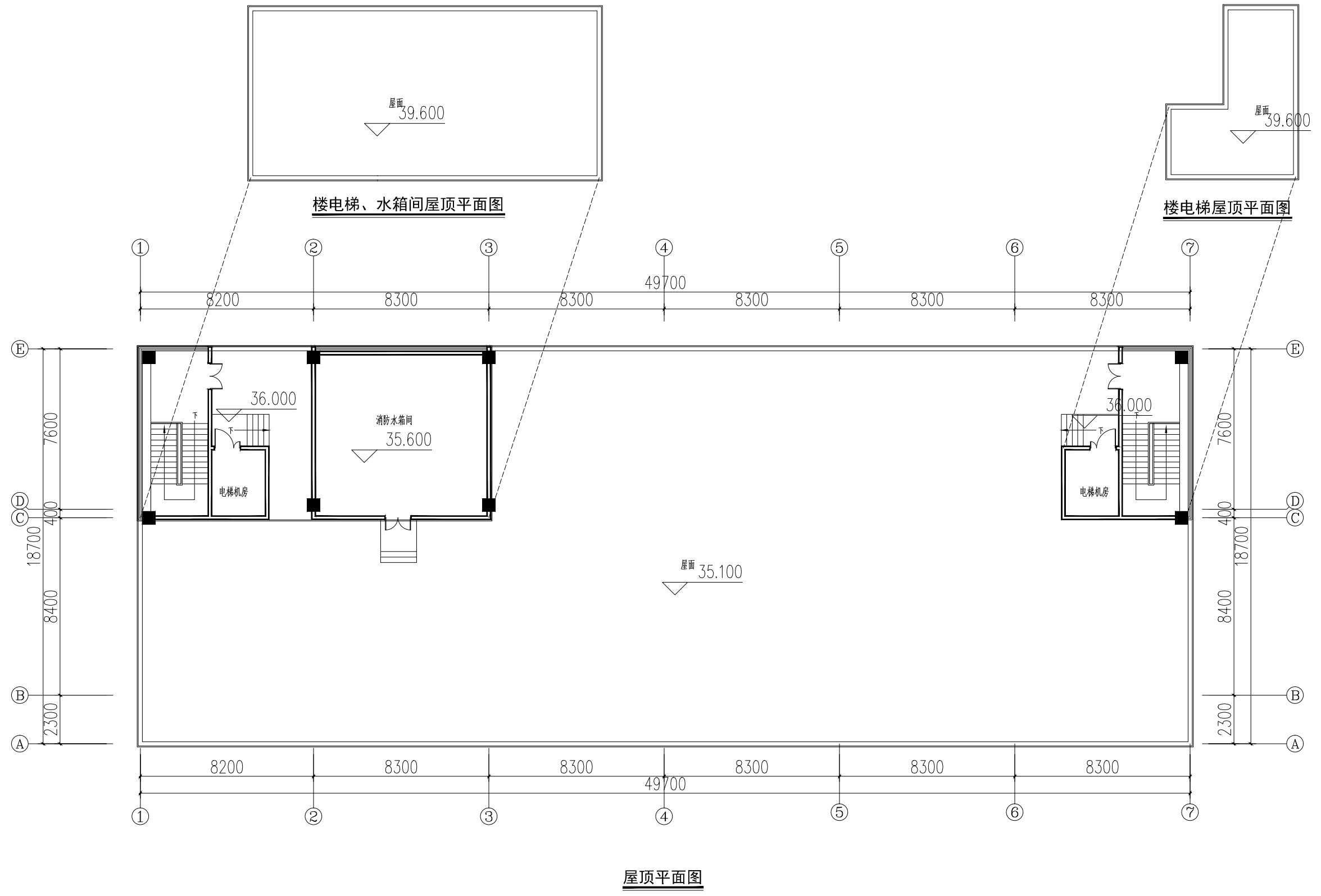
四层平面图

5#厂房



五-八层平面图

5#厂房



5#厂房

玻璃幕墙

米白色铝板

40.100

35.100

8F

31.200

7F

27.300

6F

23.400

5F

19.500

4F

15.600

3F

11.700

2F

7.200

1F

±0.000

-0.150

3900

3900

3900

3900

3900

3900

3900

4500

7200

150

35.100

8F

31.200

7F

27.300

6F

23.400

5F

19.500

4F

15.600

3F

11.700

2F

7.200

1F

±0.000

-0.150

3900

3900

3900

3900

3900

3900

3900

4500

7200

150

35250

49700

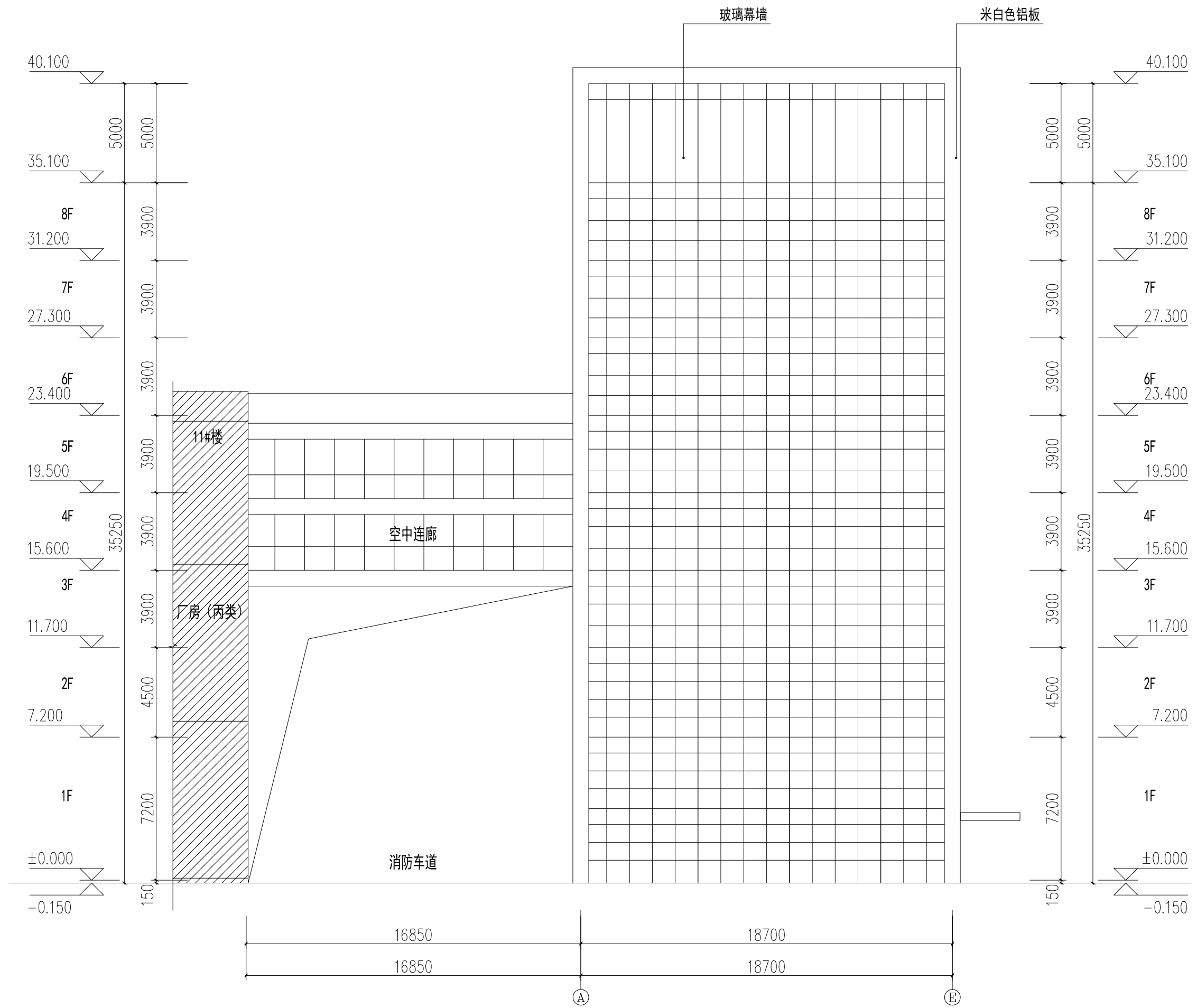
49700

⑦

①

北立面图

5#厂房



东立面图

5#厂房

