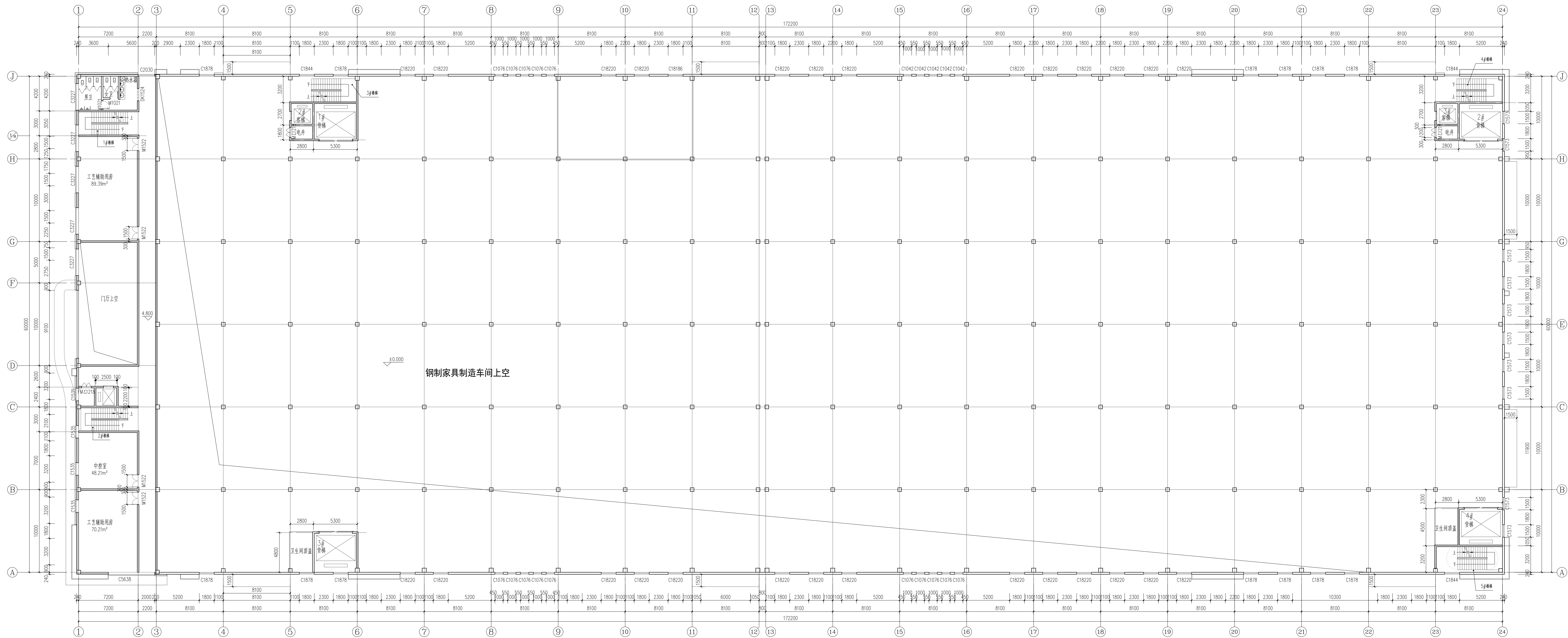


(火灾危险性丁类)
 厂房一层
 钢制家具制造车间

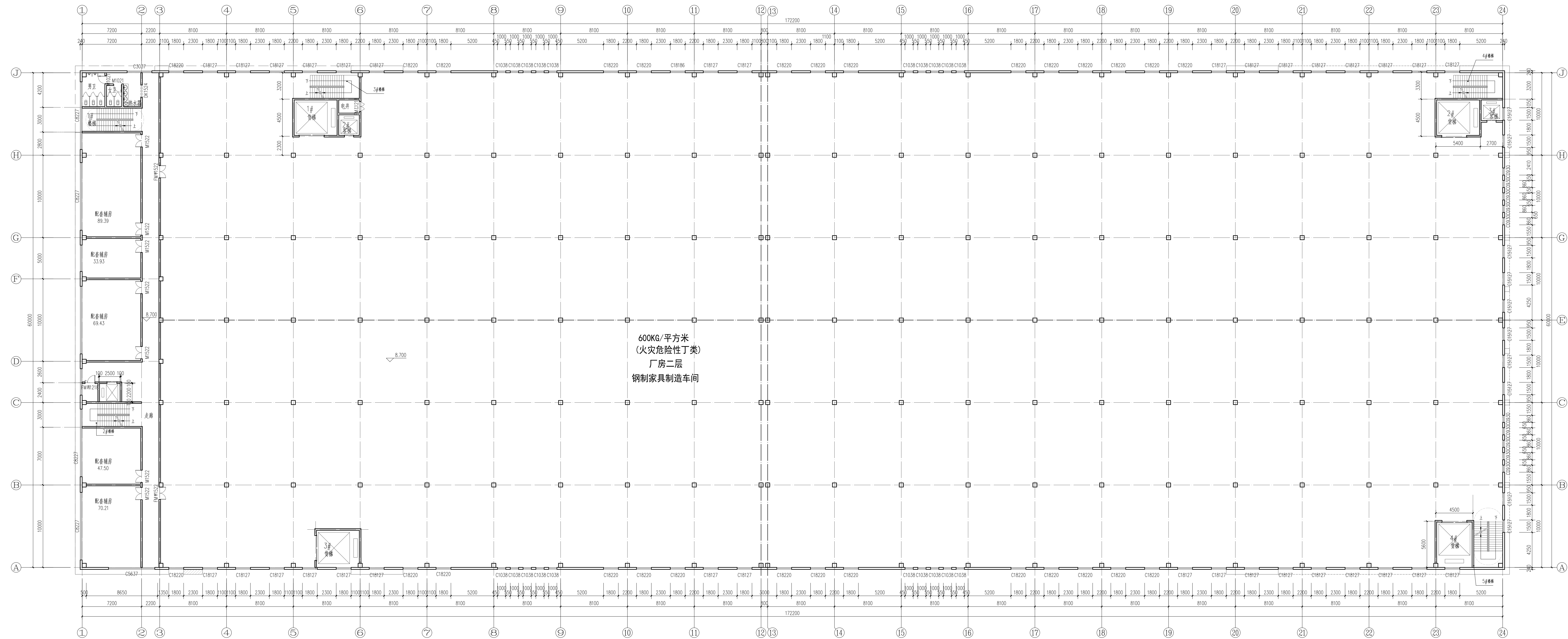
一层平面图 1:150

本层建筑面积: 10443.69m²
 总建筑面积: 39850.81m²



夹层平面图 1:150

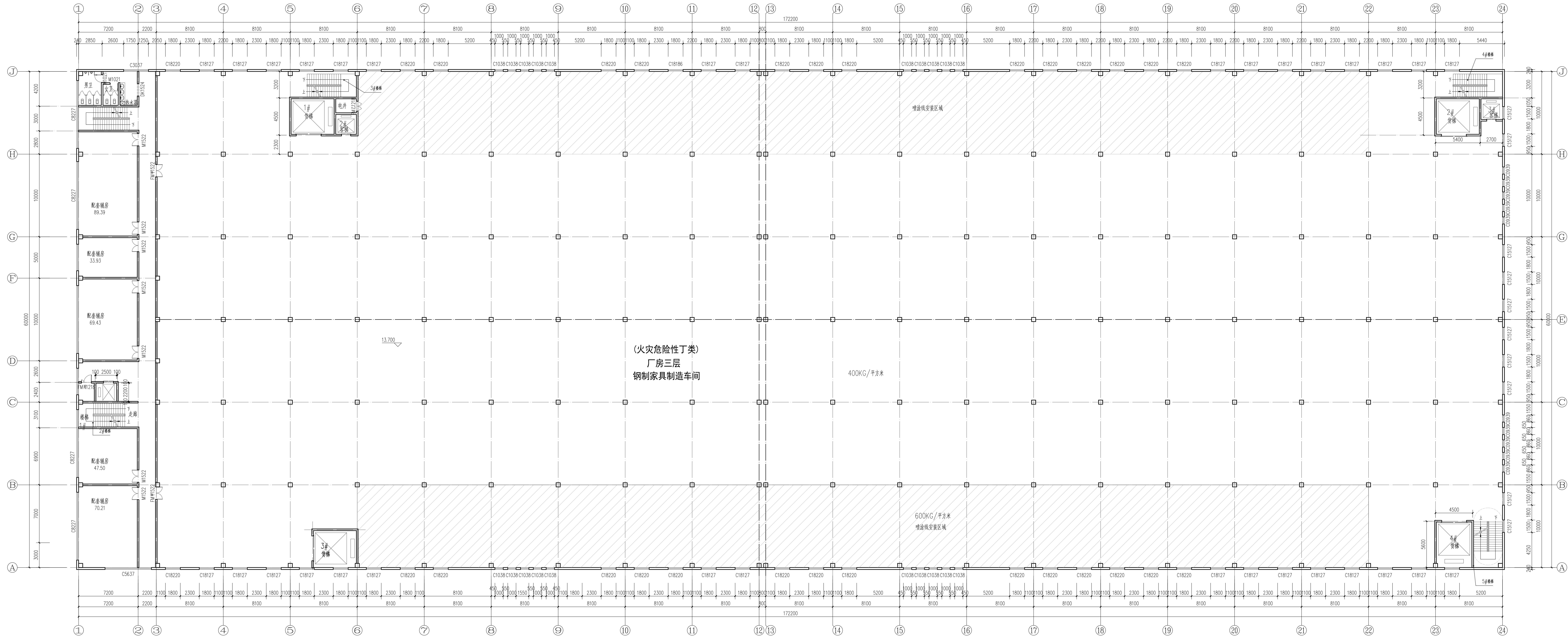
本层建筑面积: 477.79m²
 总建筑面积: 39850.81m²



600KG/平方米
(火灾危险性丁类)
厂房二层
钢制家具制造车间

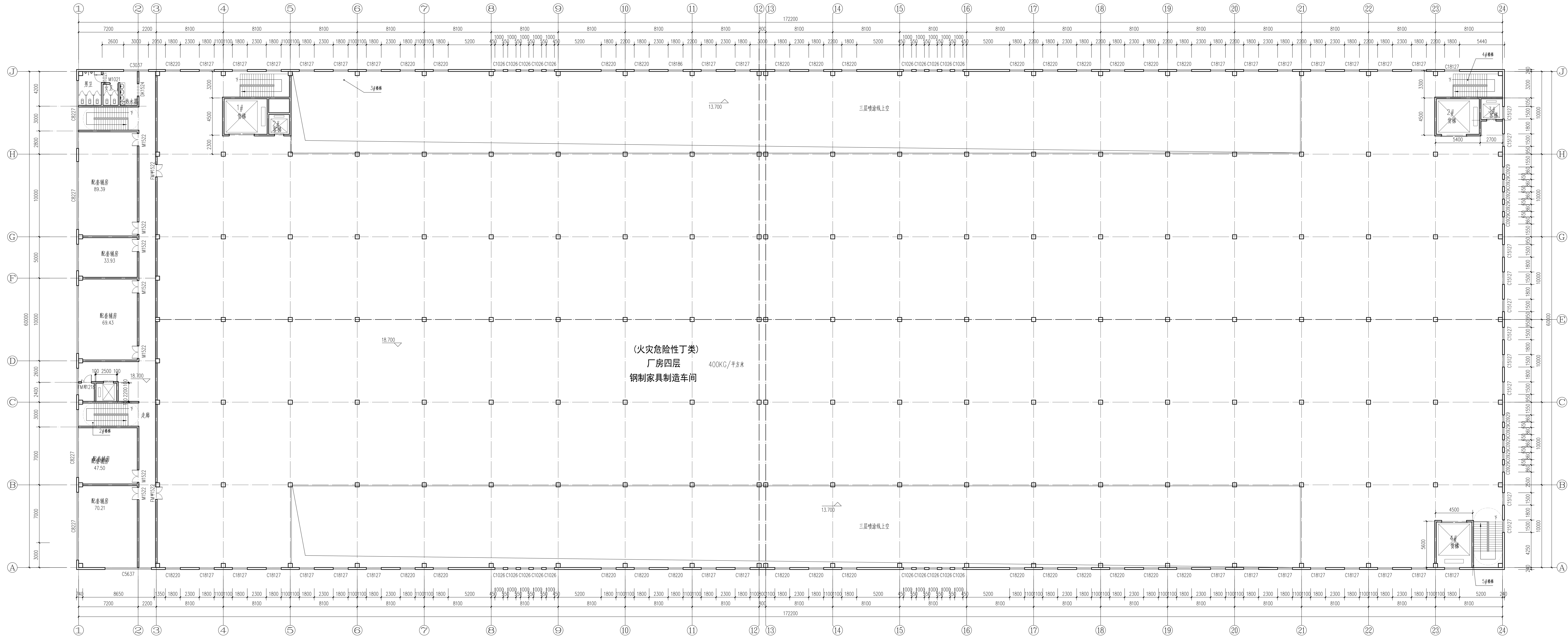
二层平面图 1:150

本层建筑面积: 10443.69m²
总建筑面积: 39850.81m²



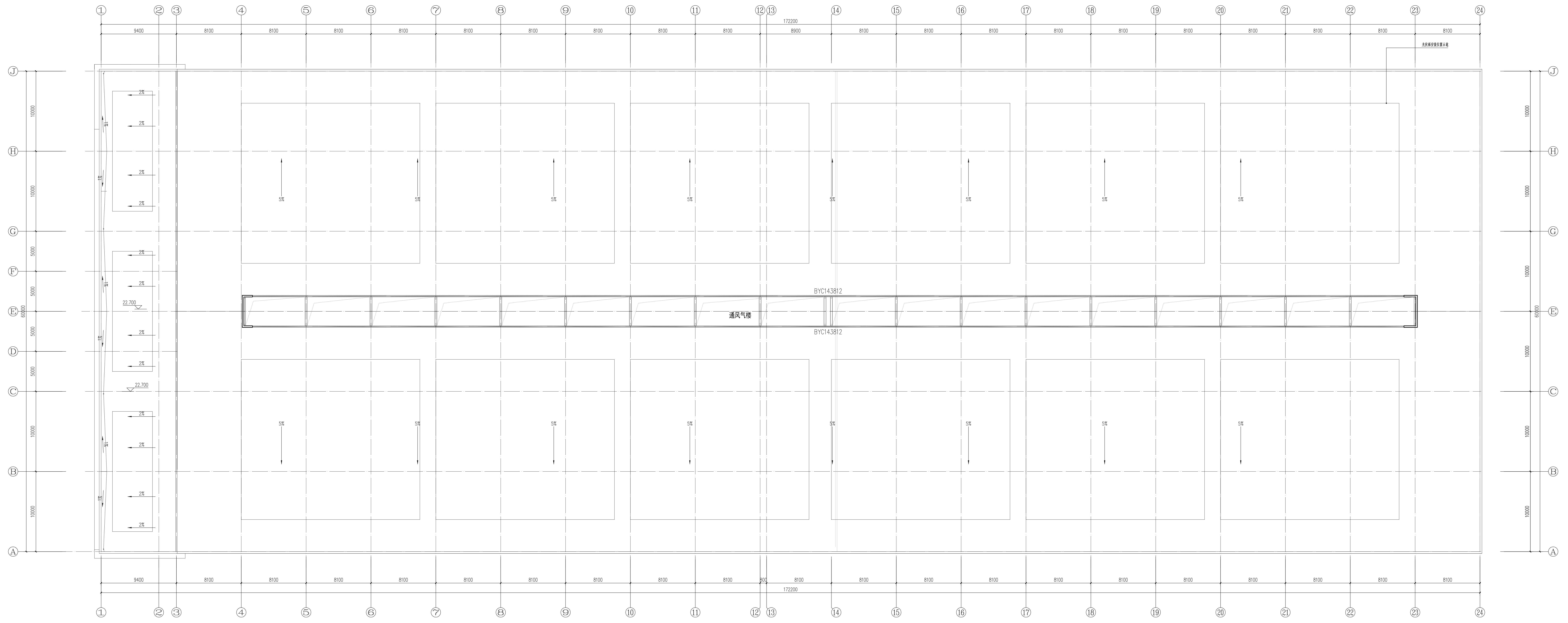
三层平面图 1:150

本层建筑面积: 10443.69m²
 总建筑面积: 39850.81m²



四层平面图 1:150

本层建筑面积: 804.195m²
 总建筑面积: 39850.81m²



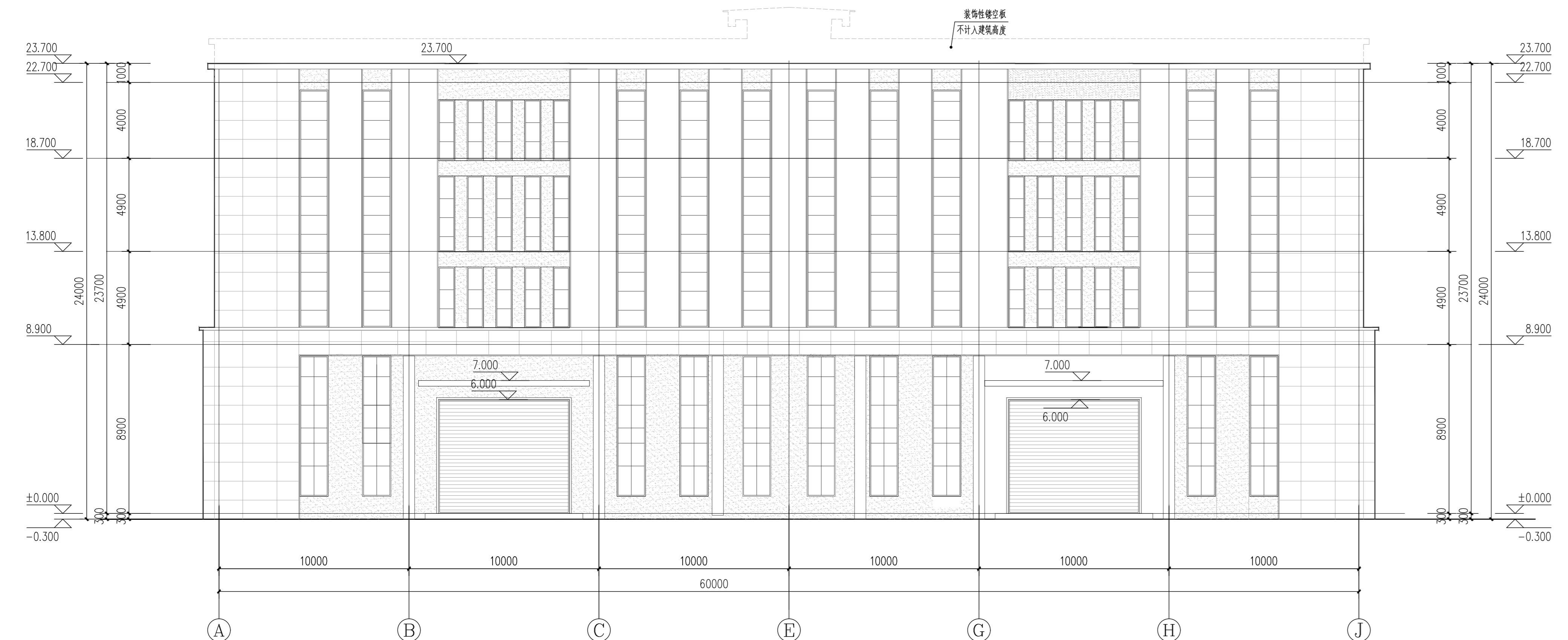
屋顶平面图 1:150



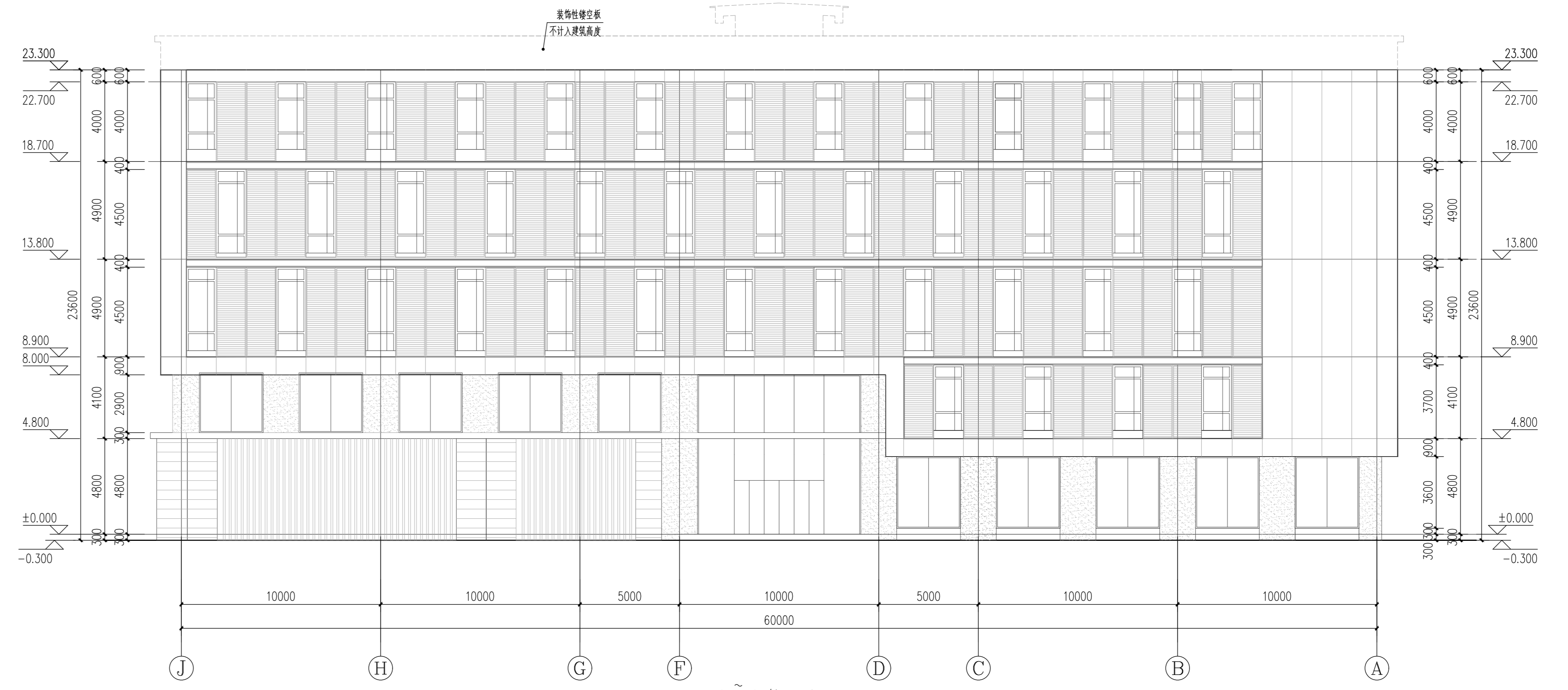
①~②④轴立面图 1:150



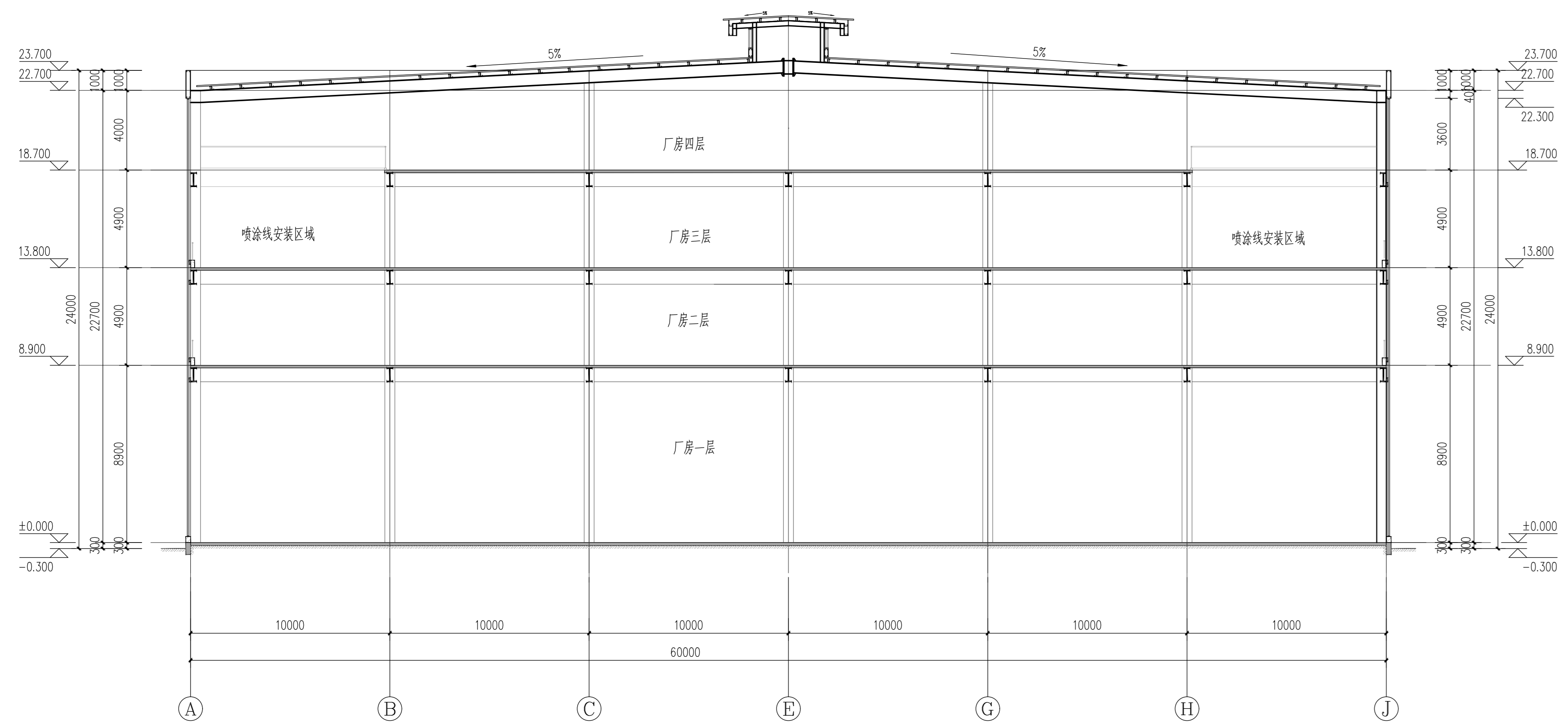
②④~①轴立面图 1:150



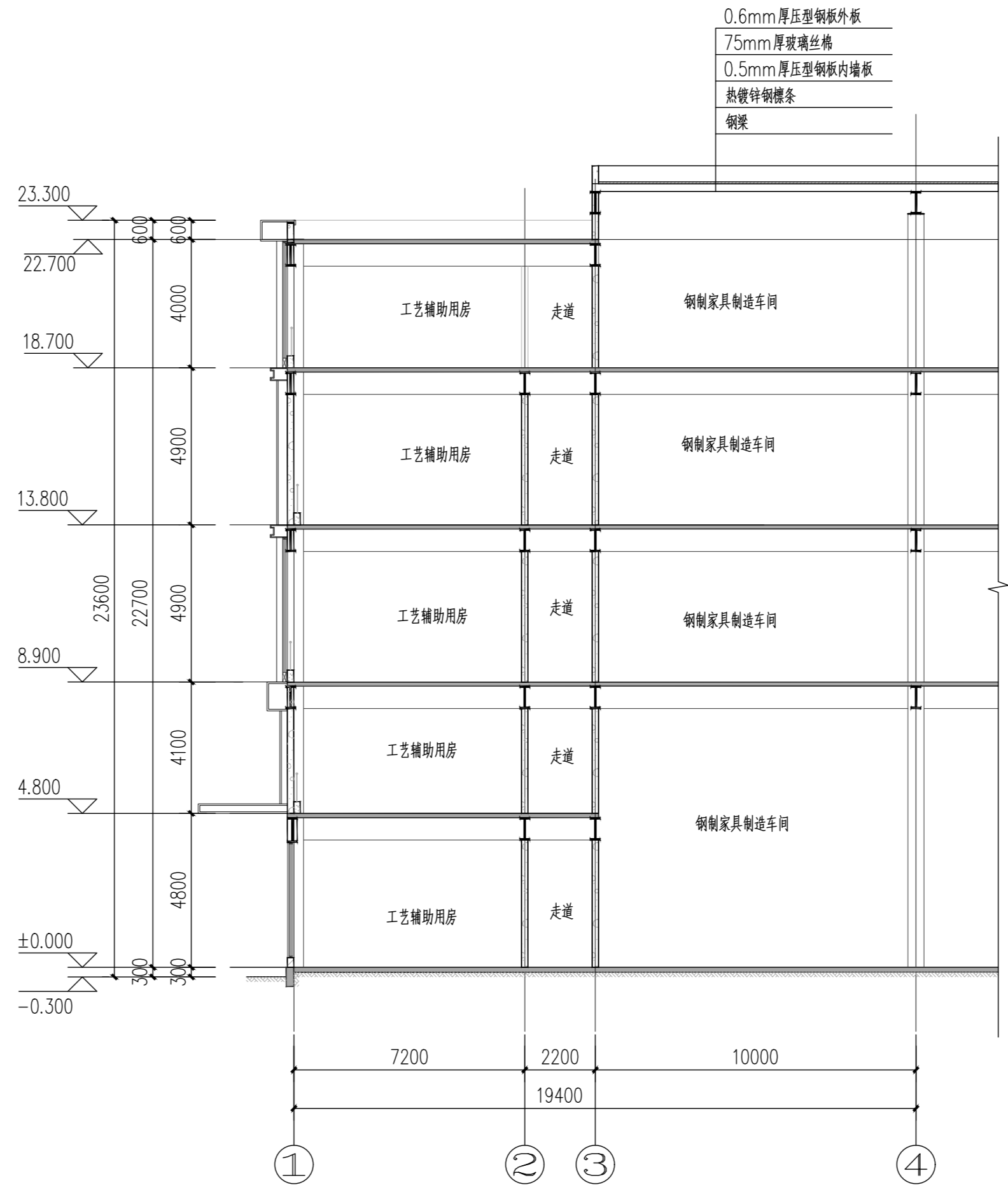
① 轴立面图 1:150



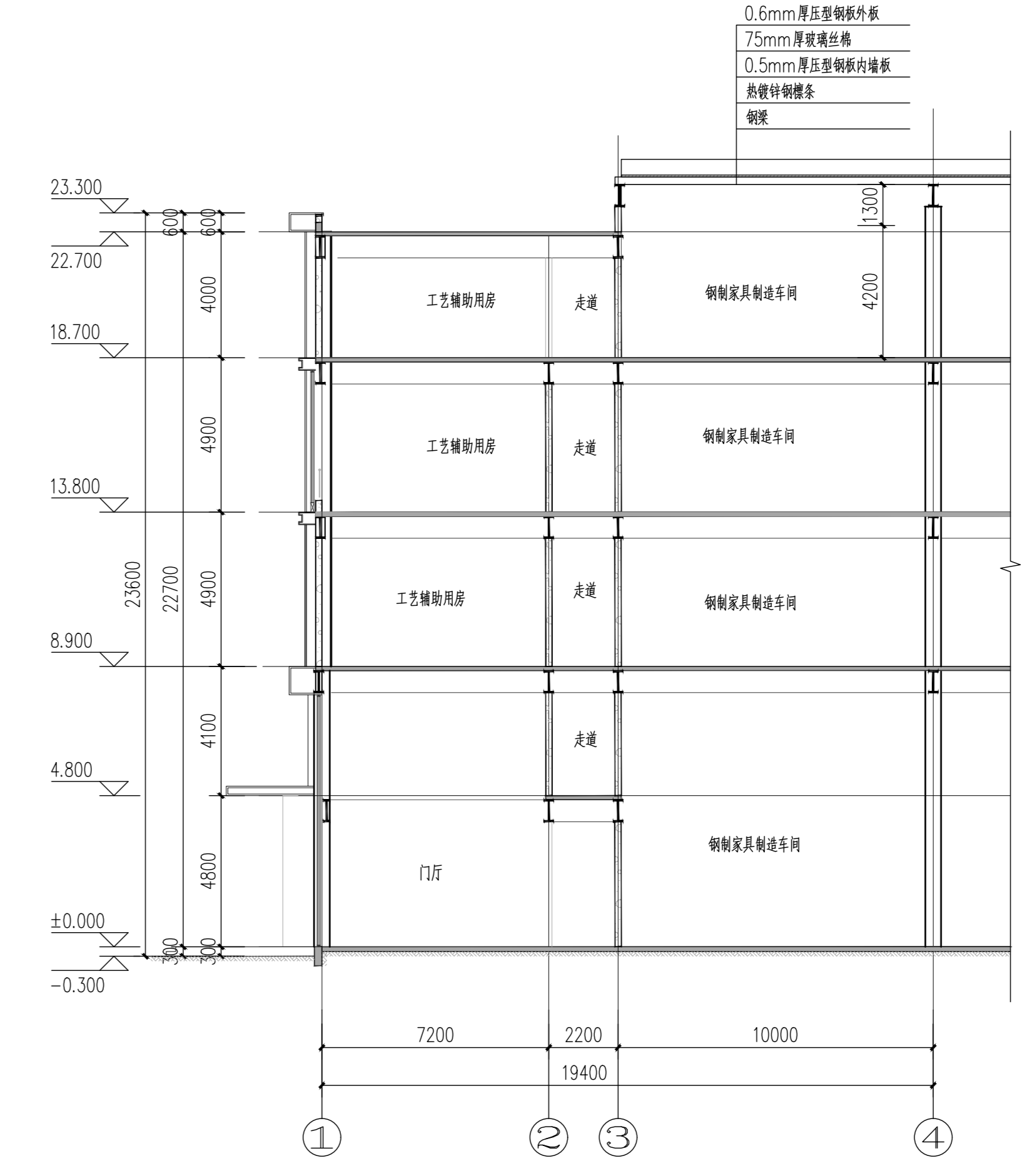
② 轴立面图 1:150



1-1剖面图 1:150



2-2剖面图 1:150



3-3剖面图 1:150