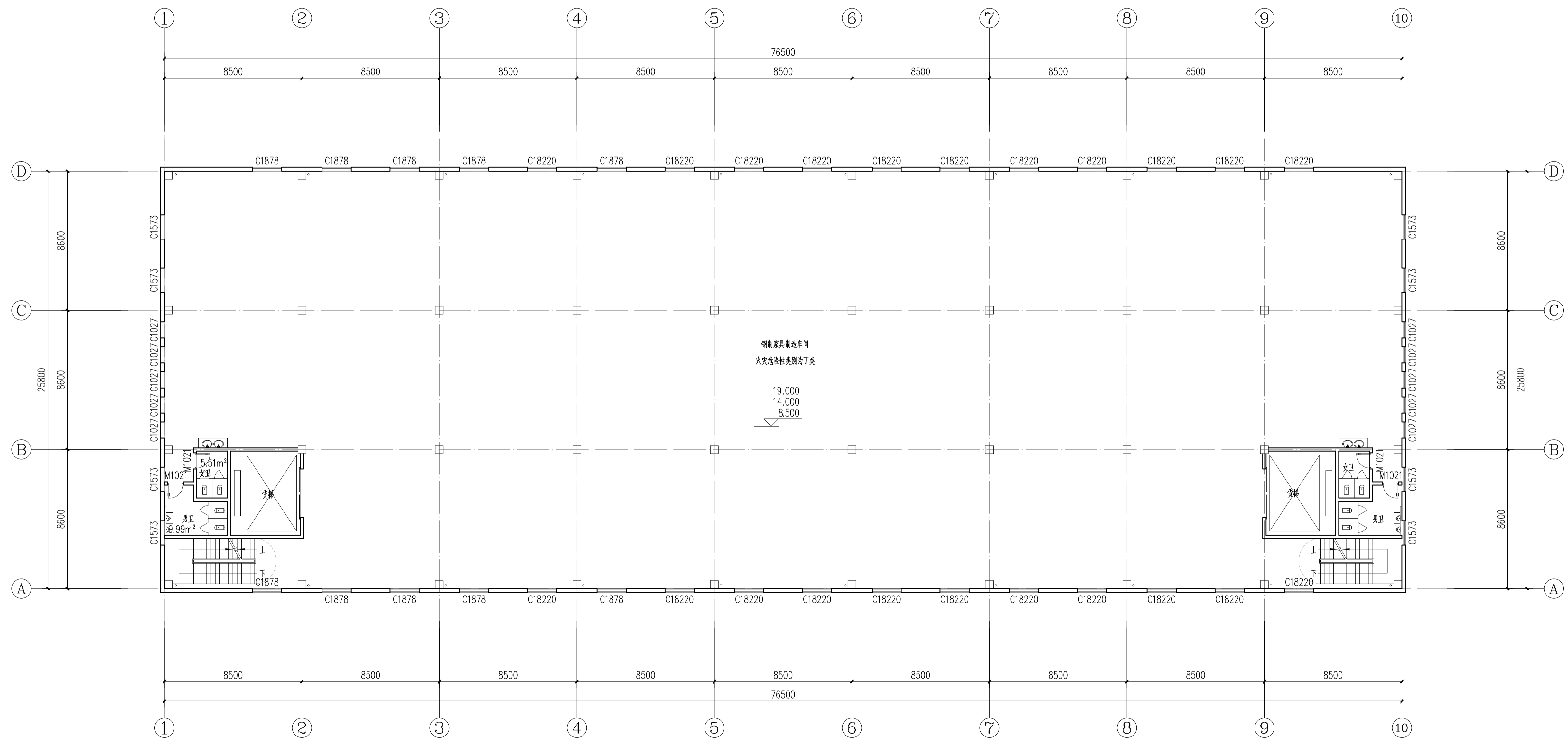
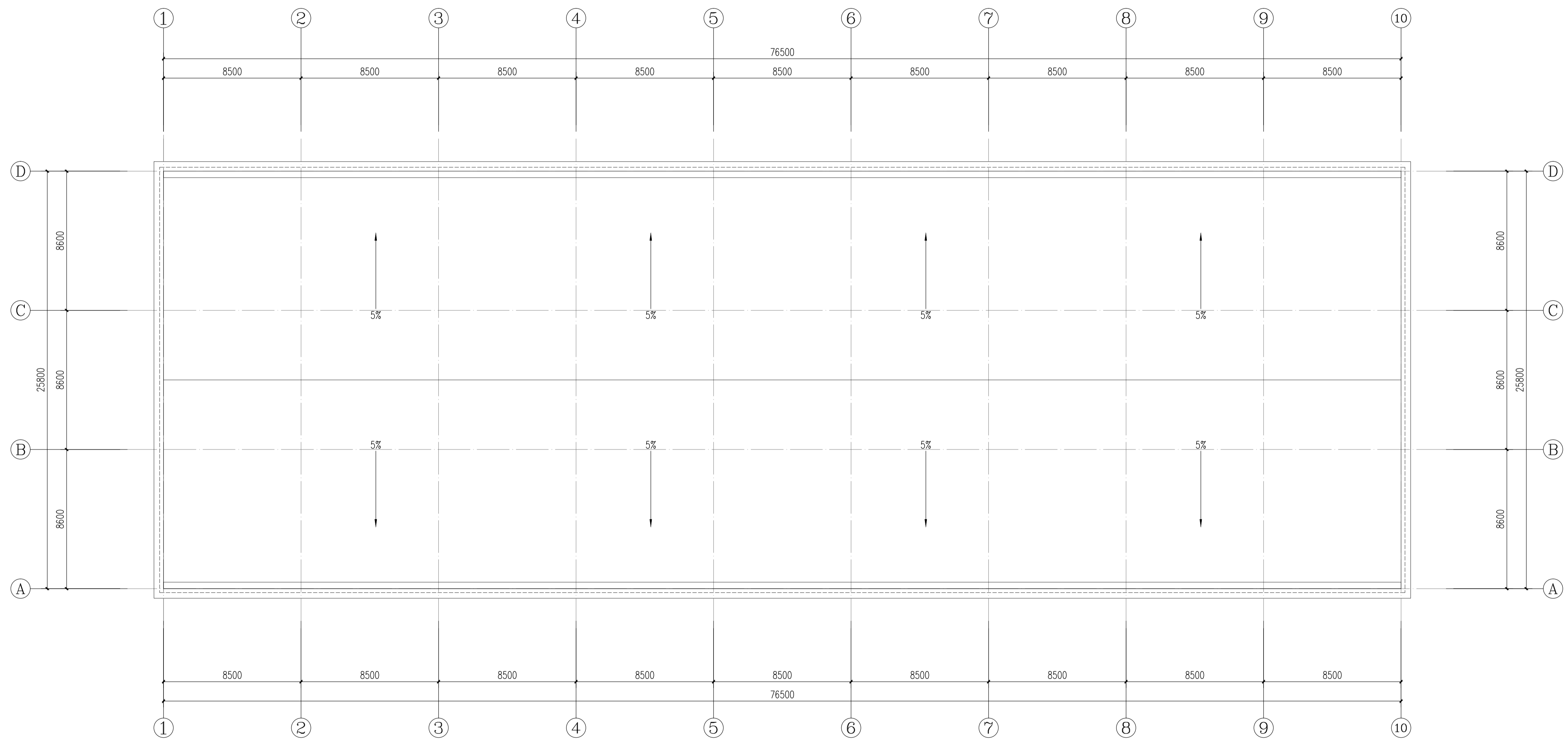


一层平面图 1:150

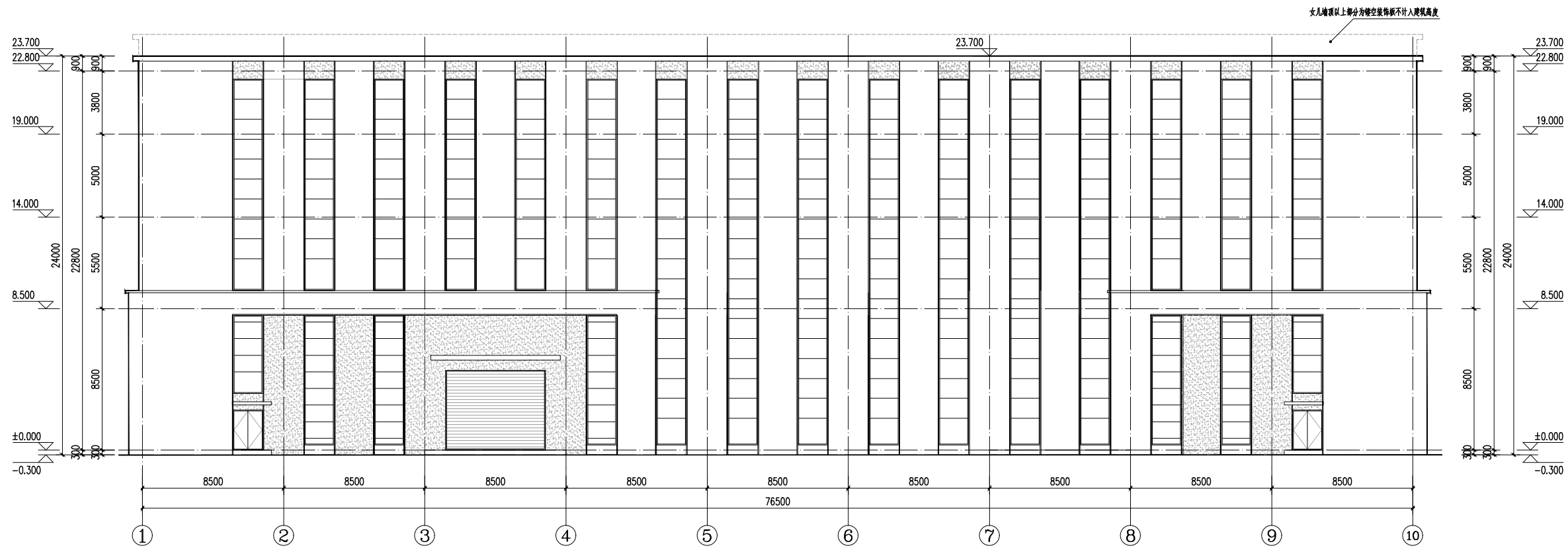
本层建筑面积: 2023.03m²
 总建筑面积: 8092.12m²



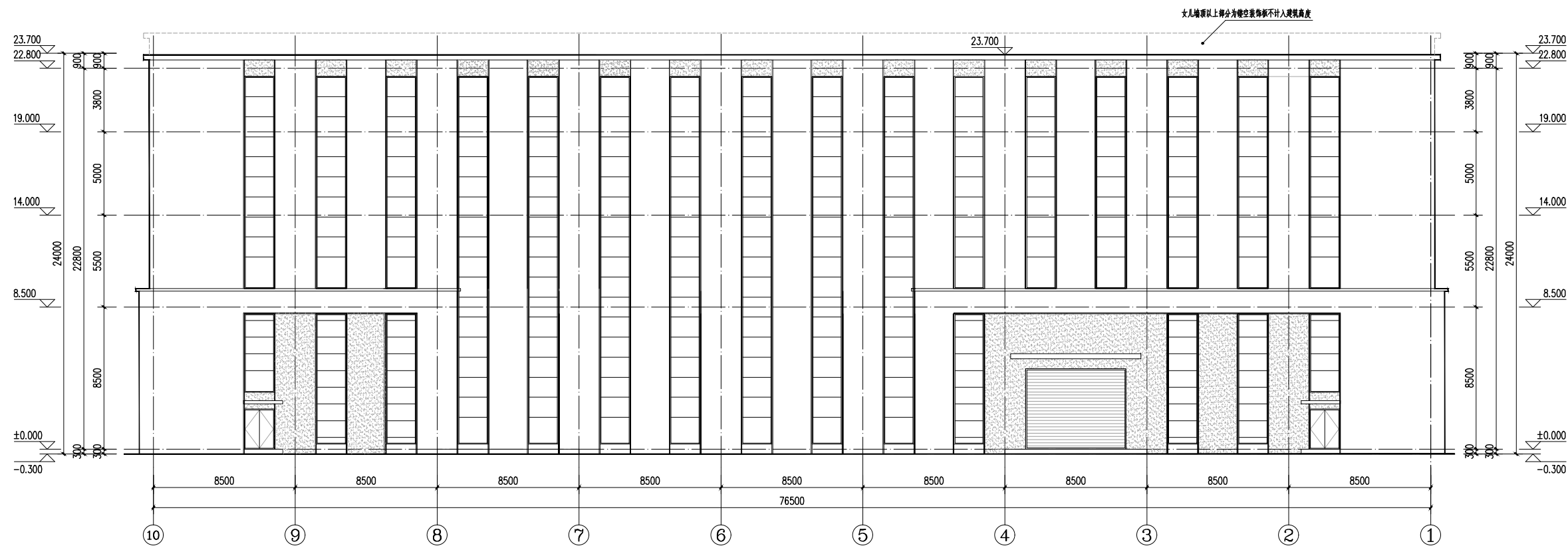
二-四层平面图 1:150
 本层建筑面积: 2023.03m²
 8092.12m²



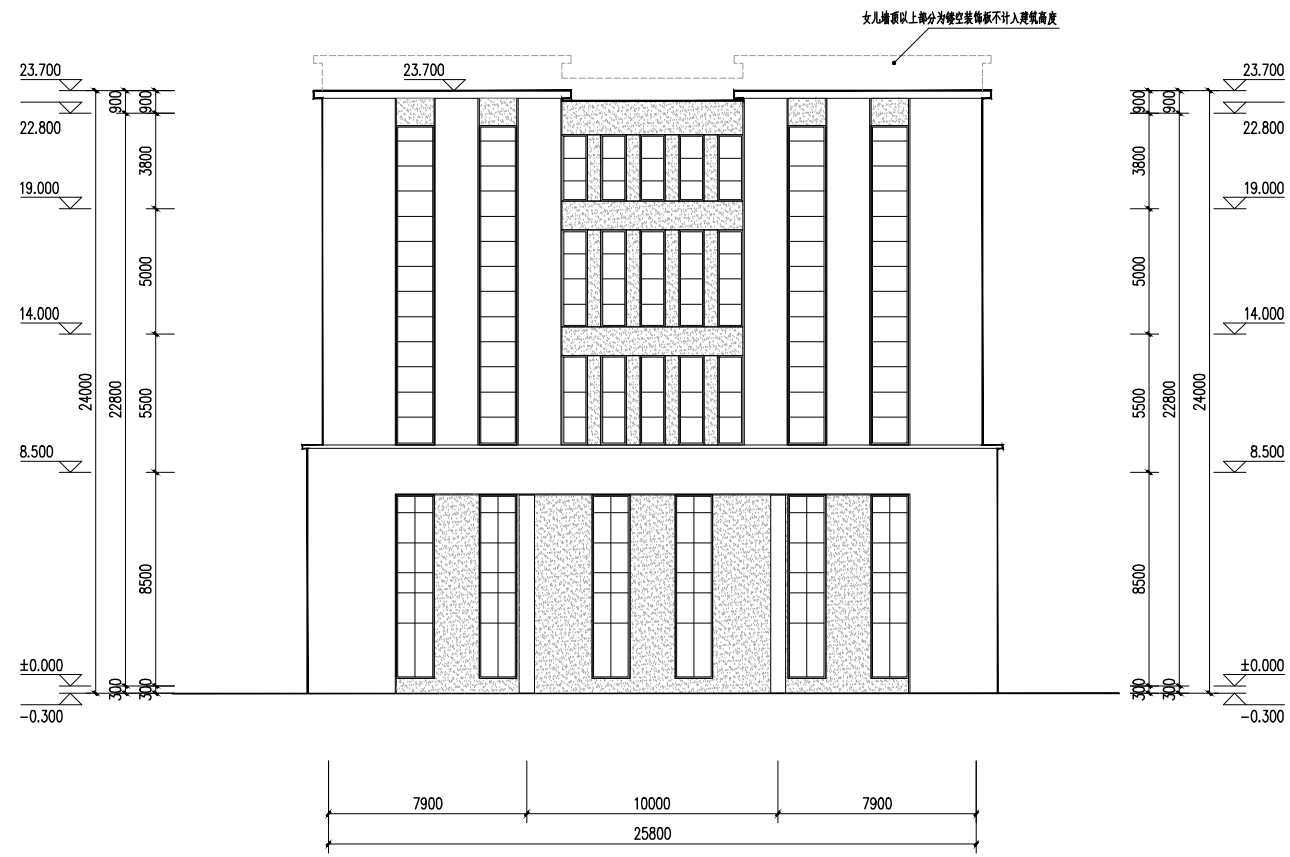
屋顶平面图 1:150



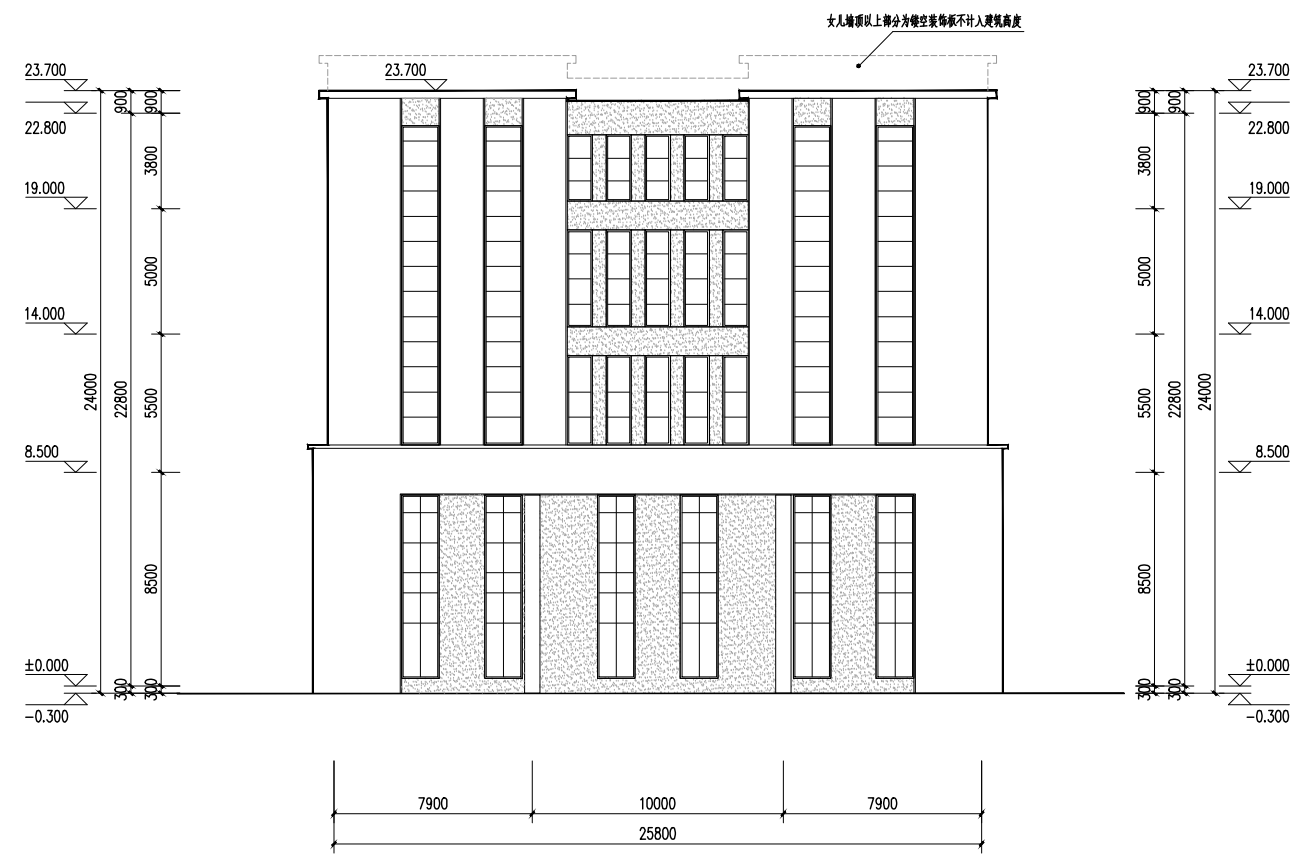
①~⑩轴立面图 1:150



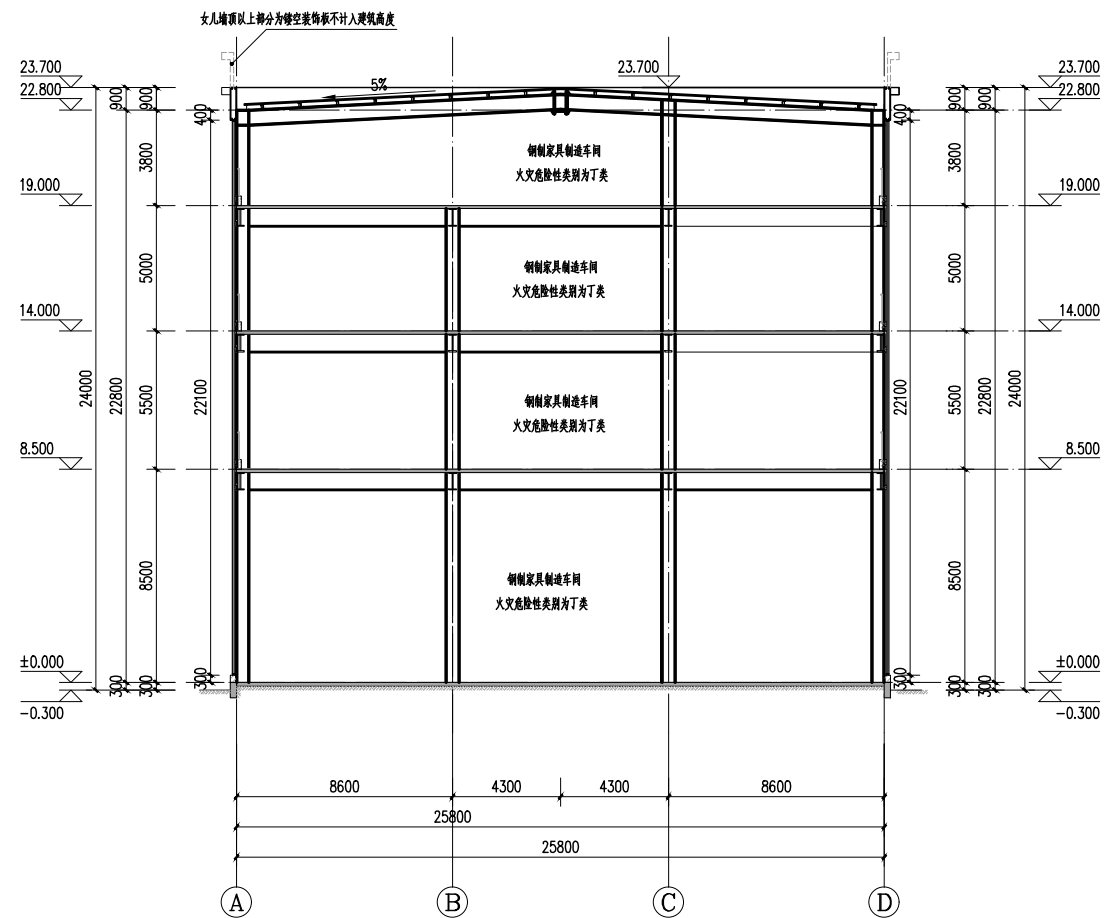
⑩~①轴立面图 1:150



东立面图 1:150



西立面图 1:150



1-1剖面图 1:150